

Crows Landing

Month	2000 AN	2001 D	2002 D	2003 BN	2004 D	2005 W	2006 W	2007 C	2008 C	2009 BN	2010 AN	2011 W	2012 D	2013 C	2014 C
Oct Boron	0.66	0.40	0.62	0.62	0.64	0.56	0.45	0.28	0.57	0.50	0.55	0.42	0.20	0.51	0.53
Nov Boron	0.73	0.49	0.48	0.71	0.68	0.75	0.67	0.60	0.47	0.61	0.66	0.66	0.43	0.57	0.72
Dec Boron	0.87	0.73	0.69	0.80	0.75	0.82	0.63	0.73	0.67	0.81	0.89	0.61	0.76	0.68	0.93
Jan Boron	0.88	0.85	0.78	0.98	0.99	0.49	0.39	0.88	0.69	0.86	0.86	0.22	0.80	0.73	
Feb Boron	0.71	1.09	1.13	1.27	1.06	0.80	0.66	0.82	0.66	0.97	0.92	0.23	0.89	0.93	
Early Mar Boron	0.30	0.86	1.31	1.41	0.97	0.90	0.40	0.73	0.94	0.94	0.64	0.30	0.94	1.05	
Late Mar Boron	0.60	1.35	1.37	1.37	1.38	0.75	0.30	1.08	1.11	1.17	0.92	0.22	0.96	1.10	
Apr Boron	0.72	0.84	1.03	0.93	0.89	0.32	0.12	0.83	1.02	0.96	0.51	0.12	0.78	0.87	
May Boron	0.59	0.59	0.71	0.80	0.61	0.18	0.09	0.55	0.52	0.62	0.41	0.14	0.40	0.74	
Jun Boron	0.99	1.06	1.22	1.16	1.12	0.29	0.09	0.56	0.89	0.73	0.48	0.18	0.64	0.74	
Jul Boron	0.95	1.15	1.24	1.22	1.29	0.47	0.43	0.69	0.74	0.82	0.70	0.20	0.71	1.32	
Aug Boron	0.91	1.10	1.22	1.17	1.08	0.51	0.42	0.67	0.44	0.75	0.67	0.35	0.60	1.18	
Early Sep Boron	0.71	0.86	1.09	0.98	1.06	0.50	0.36	0.53	0.39	0.62	0.34	0.30	0.46	1.02	
Late Sep Boron	0.55	0.68	0.86	0.79	0.84	0.27	0.33	0.65	0.61	0.74	0.34	0.26	0.51	0.51	

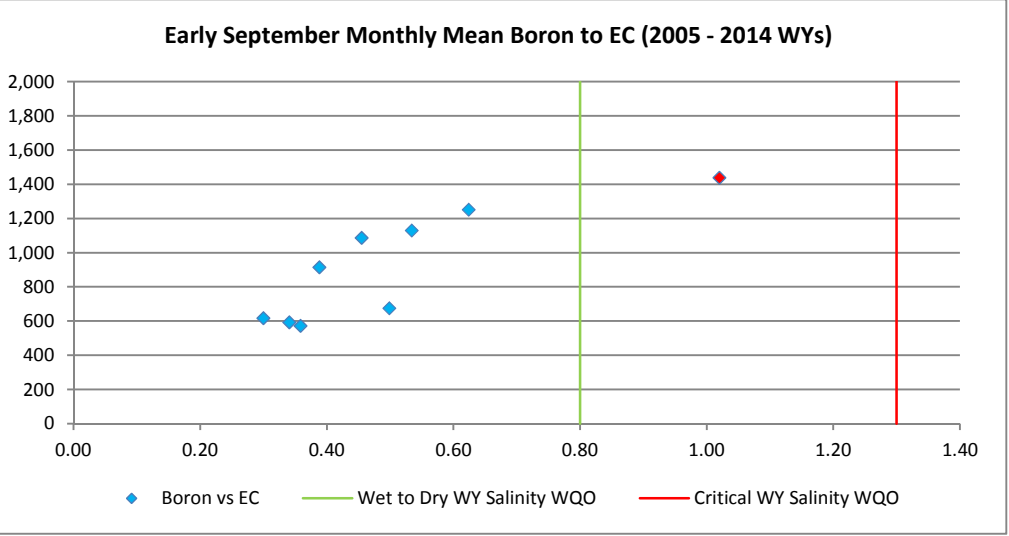
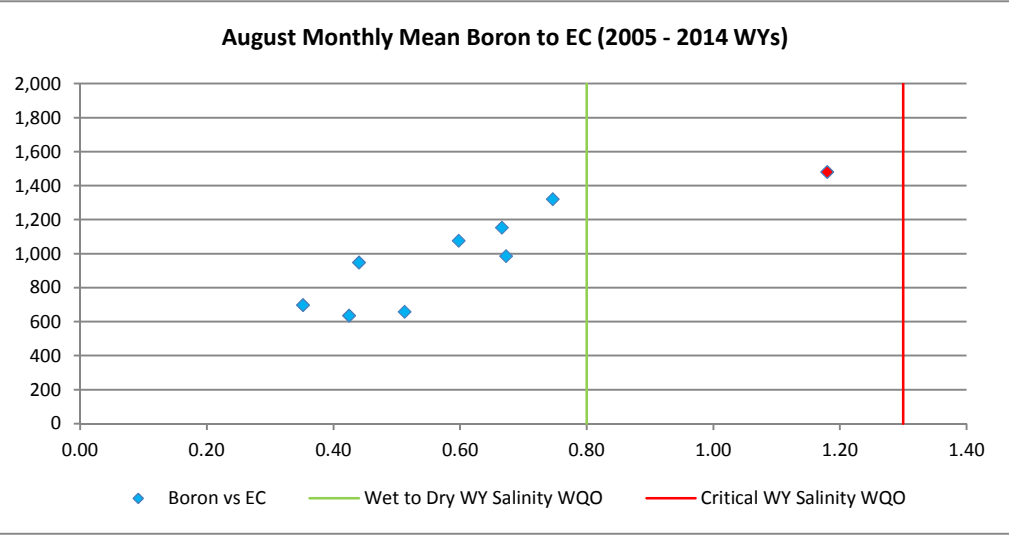
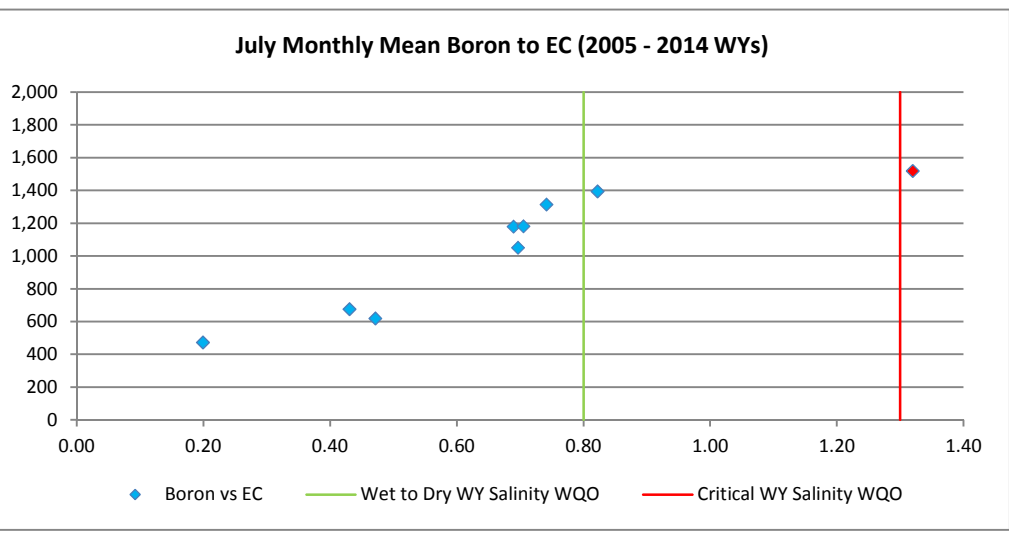
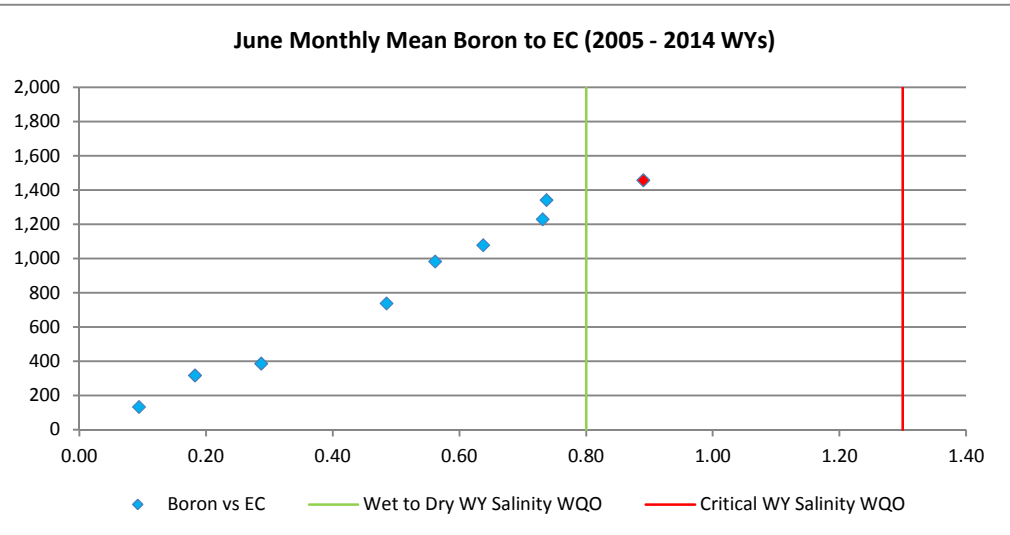
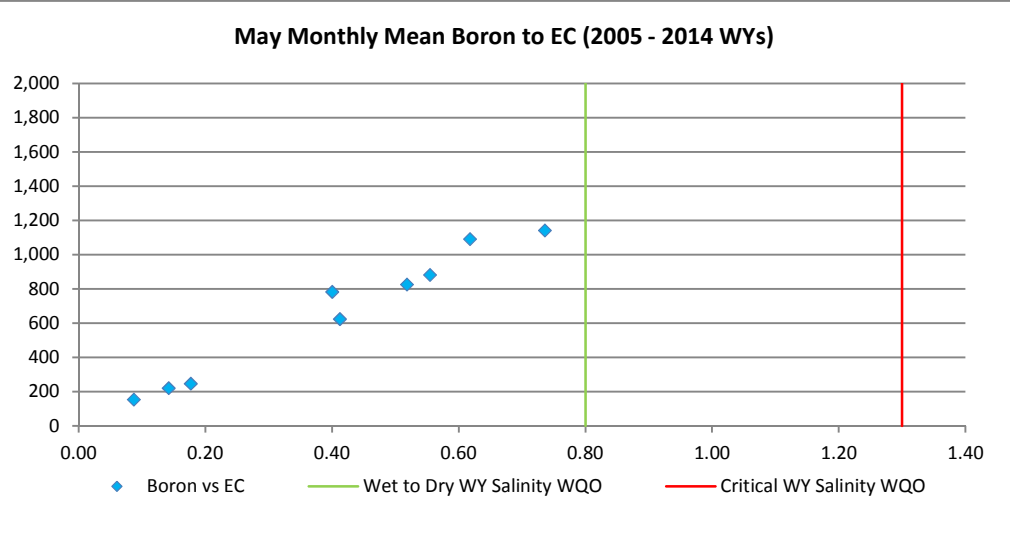
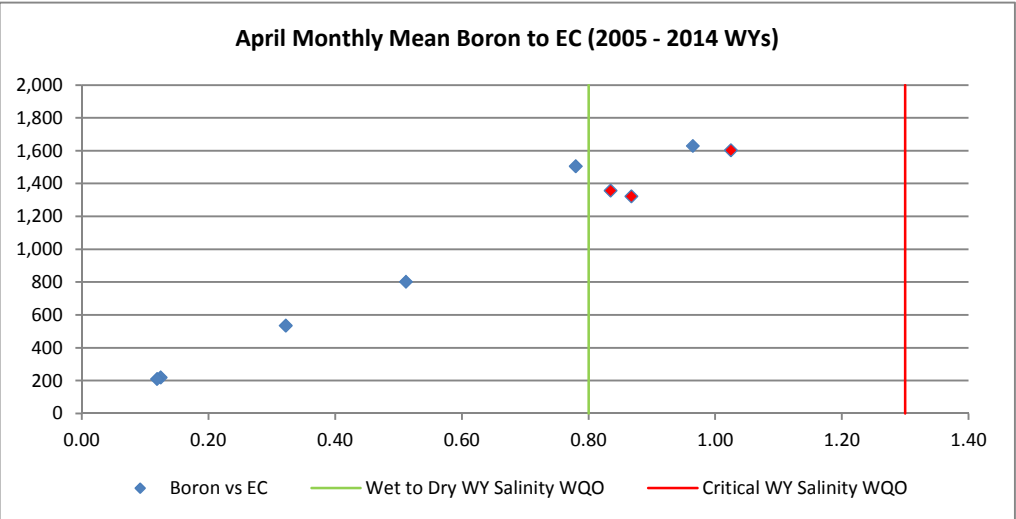
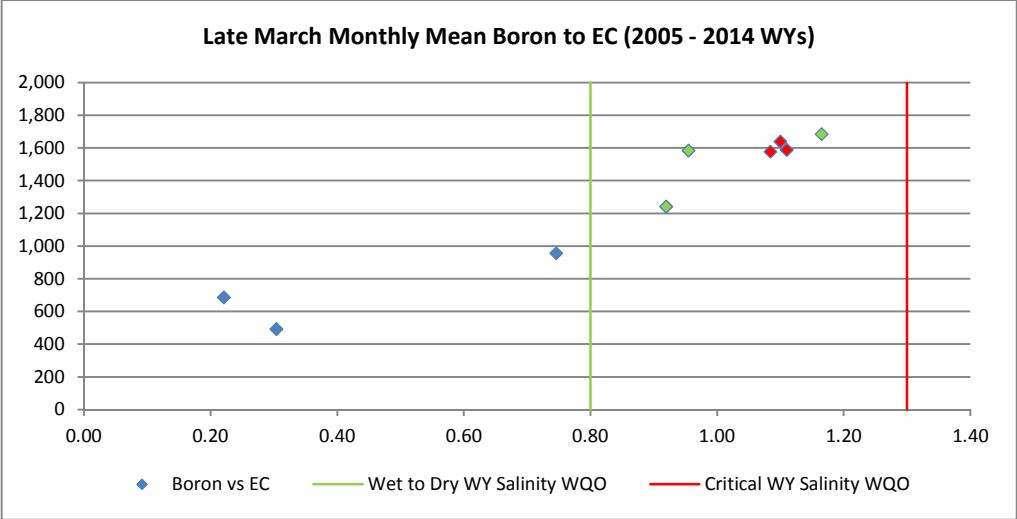
Values in Red from GBP data compiled by CVWB.

Month	2000 AN	2001 D	2002 D	2003 BN	2004 D	2005 W	2006 W	2007 C	2009 C	2009 BN	2010 AN	2011 W	2012 D	2013 C	2014 C
Oct Boron	923	651	1,197	995	930	908	739	487	1,017	897	919	1,330	442	904	997
Nov Boron	1,119	754		1,113	1,077	1,051	1,132	974	773	1,036	1,076	980	949	932	1,072
Dec Boron	1,361	1,104		1,152	1,289	1,178	1,008	1,205	1,041	1,276	1,371	1,023	1,306	931	1,278
Jan Boron	1,350	1,243	1,593	1,433	1,343	781	586	1,288	1,055	1,408	1,309	360	1,624	1,142	1,554
Feb Boron	944	1,420	1,558	1,677	1,441	1,118	1,043	1,366	1,022	1,346	1,414	375	1,552	1,422	1,726
Early Mar Boron	459	1,139	1,664	1,667	1,340	1,124	616	1,282	1,324	1,301	924	446	1,623	1,402	2,002
Late Mar Boron	816	1,682	1,805	1,739	1,740	955	493	1,577	1,588	1,684	1,241	687	1,584	1,638	2,047
Apr Boron	1,039	1,225	1,492	1,331	1,345	536	220	1,357	1,603	1,629	801	211	1,506	1,322	1,630
May Boron	904	915	968	1,088	971	246	153	881	825	1,091	623	221	783	1,142	1,765
Jun Boron	1,251	1,391	1,438	1,425	1,526	387	133	983	1,457	1,228	737	317	1,077	1,341	1,843
Jul Boron	1,171	1,385	1,456	1,362	1,516	618	674	1,178	1,314	1,393	1,050	473	1,180	1,518	1,650
Aug Boron	1,120	1,328	1,443	1,343	1,329	659	636	1,154	949	1,321	985	698	1,077	1,480	1,390
Early Sep Boron	988	1,378	1,446	1,399	1,396	674	572	1,131	916	1,252	592	618	1,087	1,438	1,193
Late Sep Boron	913	1,269	1,356	1,248	1,198	458	551	1,162	1,135	1,264	633	526	1,074	790	1,297

values in blue from Jan 27, 2014 CDEC download

Crows Landing Growing Season

March 15th through September 14th: 0.8 mg/L
 Critical Water Year: 1.3 mg/L



Crows Landing Non-Growing Season

September 15th through March 14th: 1.0 mg/L
 Critical Water Year: 1.3 mg/L

