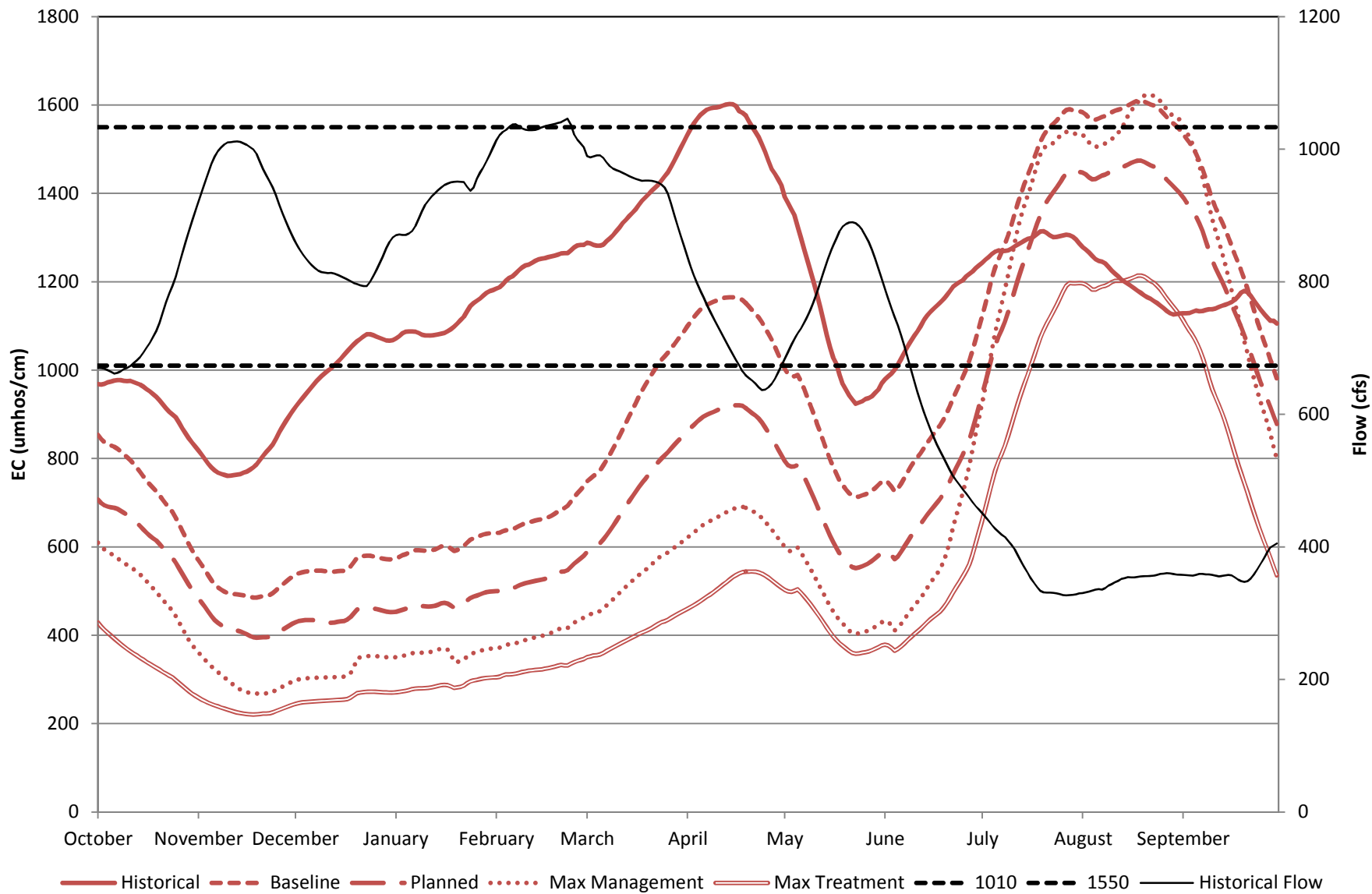
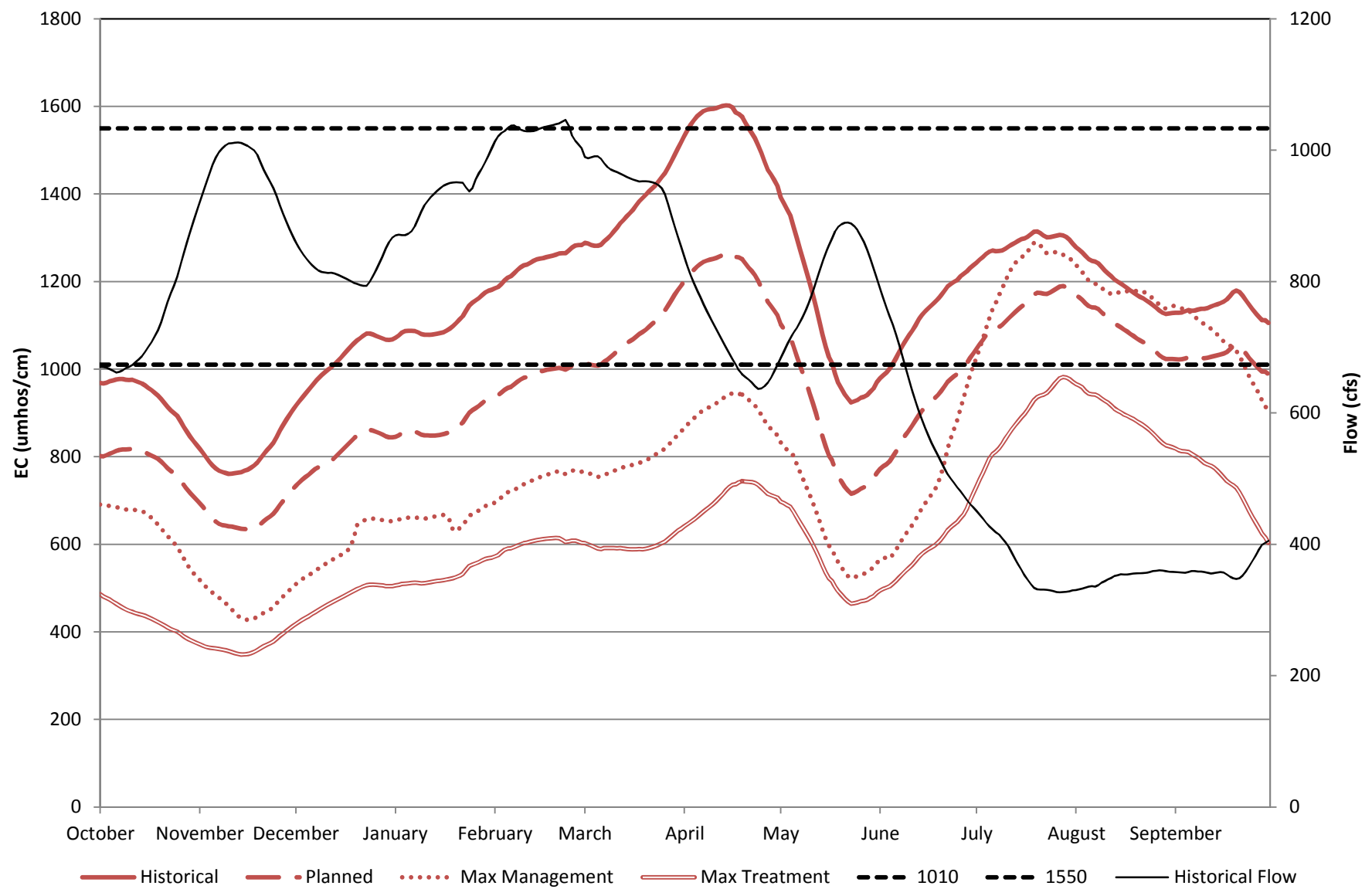


Crows Landing Critical Year Running Average EC for Alternatives: Raw WARMF Output (Oct. 1, 1995 - Sept. 1, 2013)

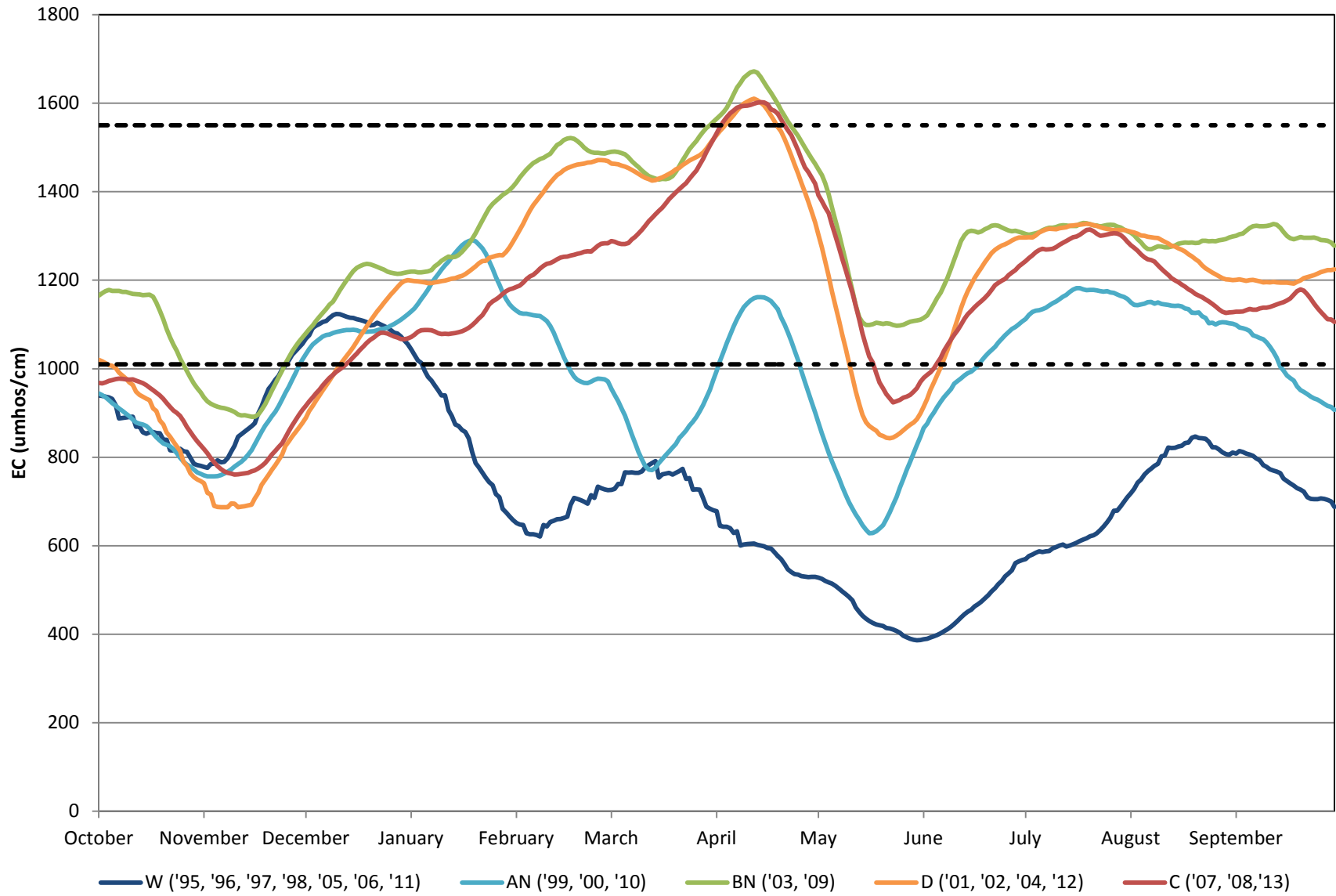


Crows - Patterson Critical Year Running Average EC for Alternatives: Adjusted to Historical Output (Oct. 1, 1995 - Sept. 1, 2013)



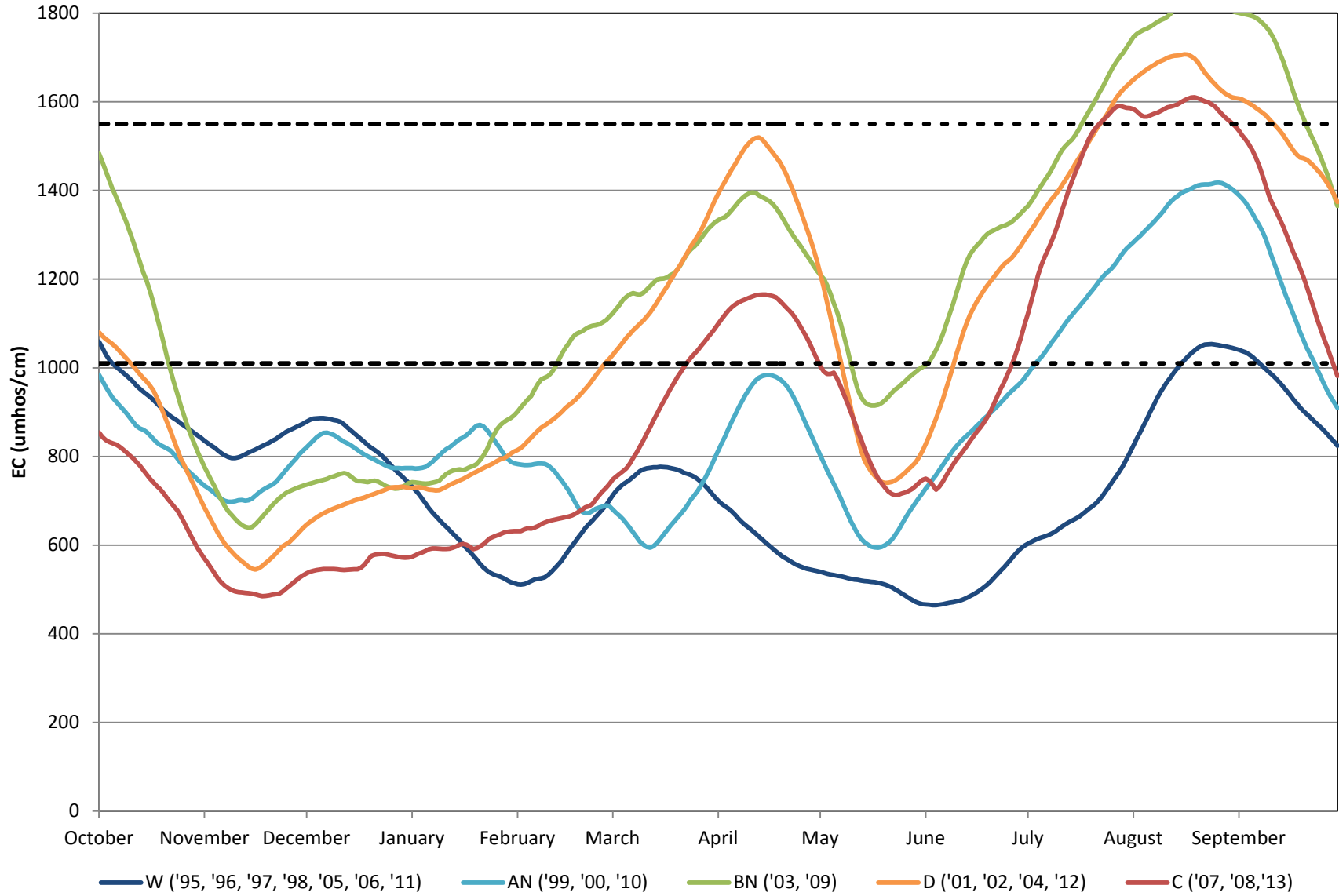
Crows - Patterson Historical

Running Average EC by Water Year Type (Oct. 1, 1995 - Sept. 1, 2013)



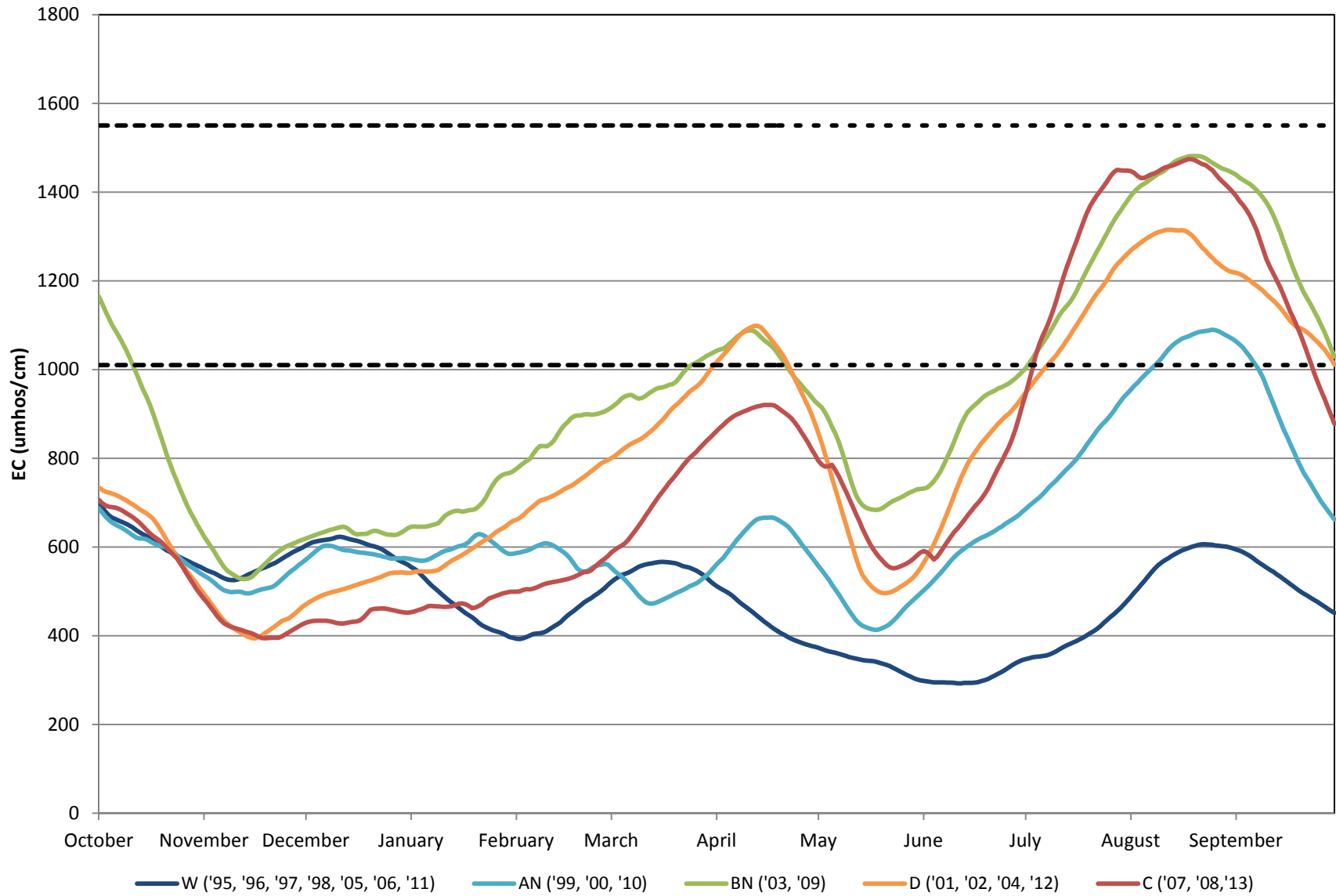
Crows Landing Baseline

Running Average EC by Water Year Type (Oct. 1, 1995 - Sept. 1, 2013)

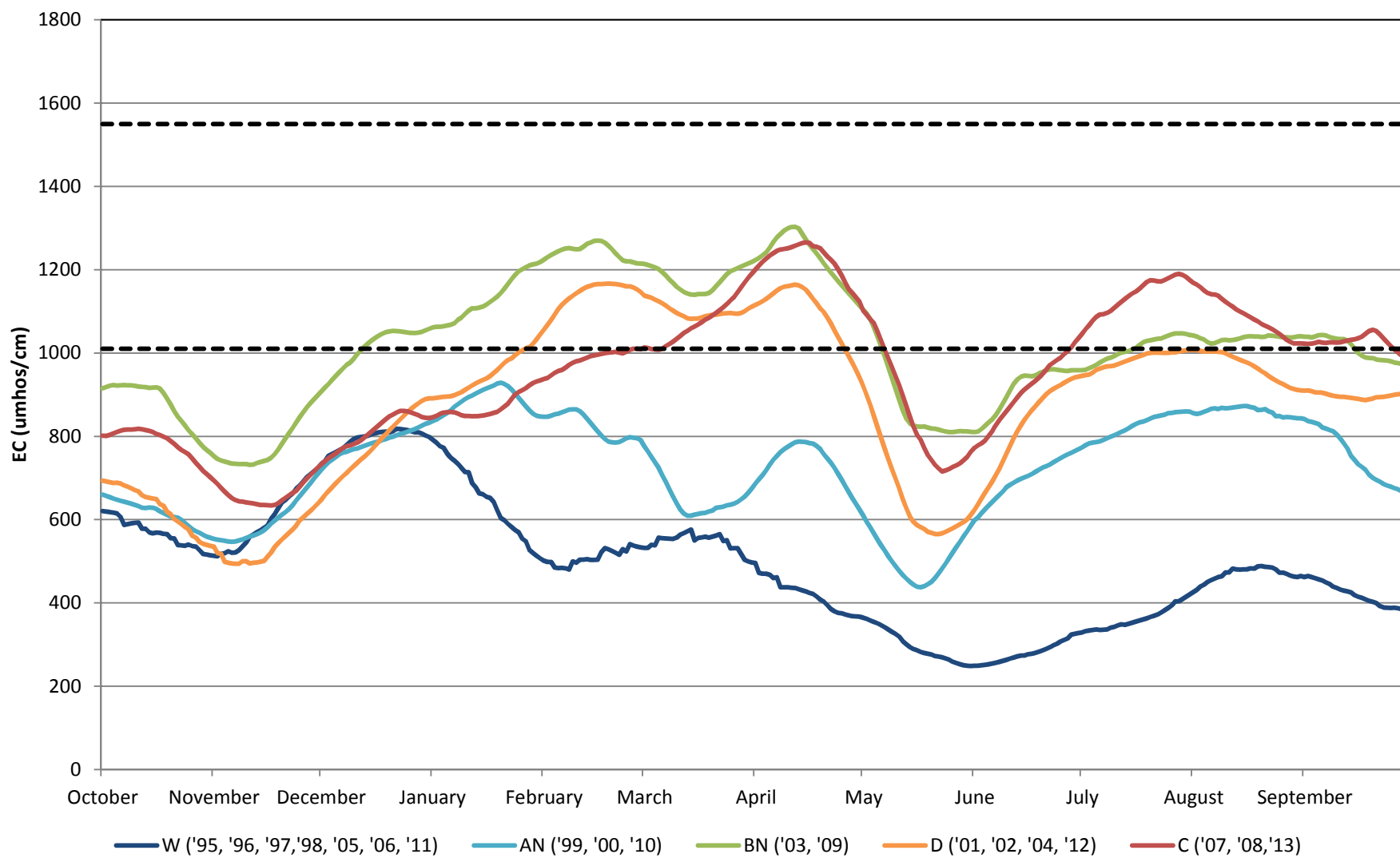


Crows Landing Planned Alternative

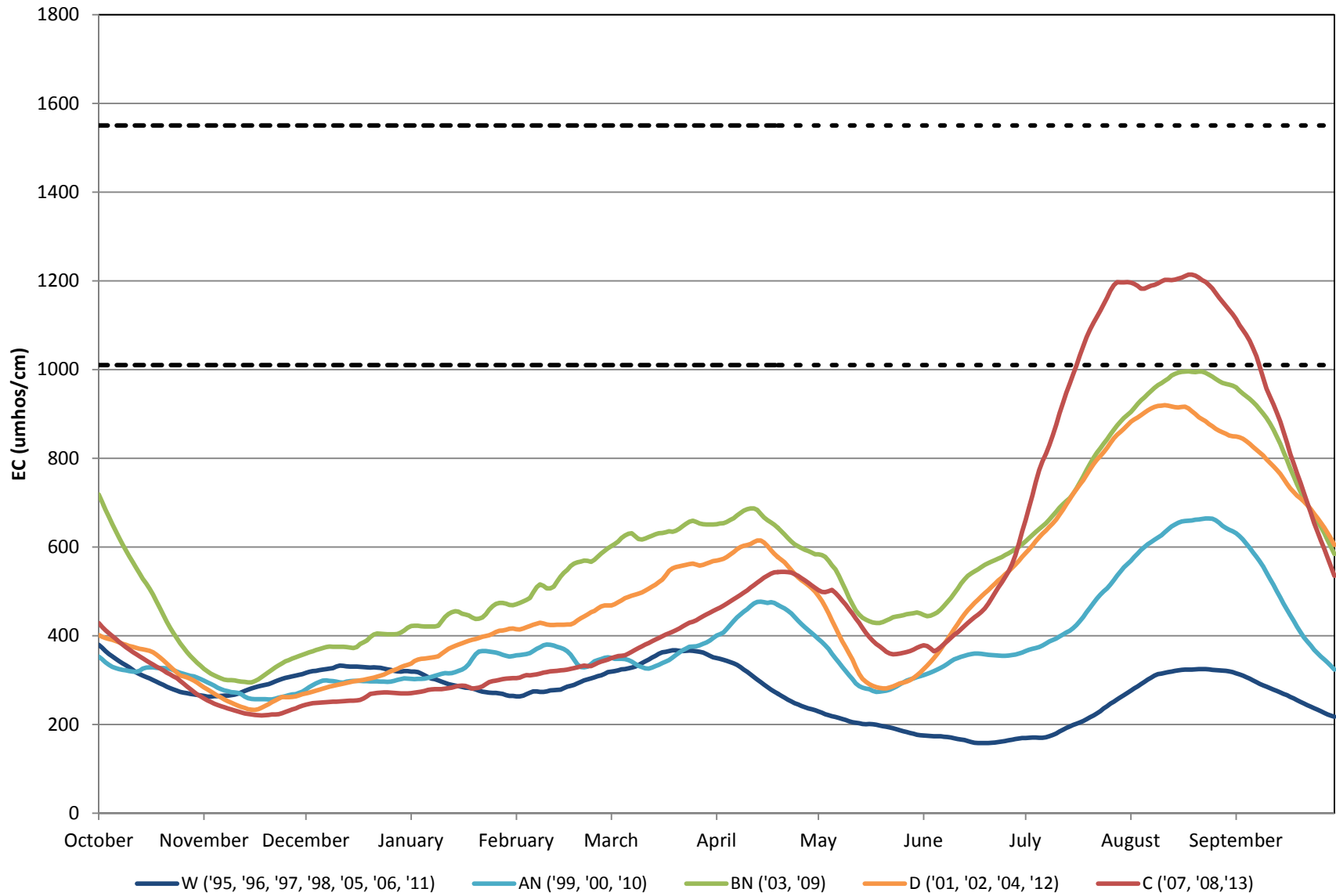
Running Average EC by Water Year Type (Oct. 1, 1995 - Sept. 1, 2013)



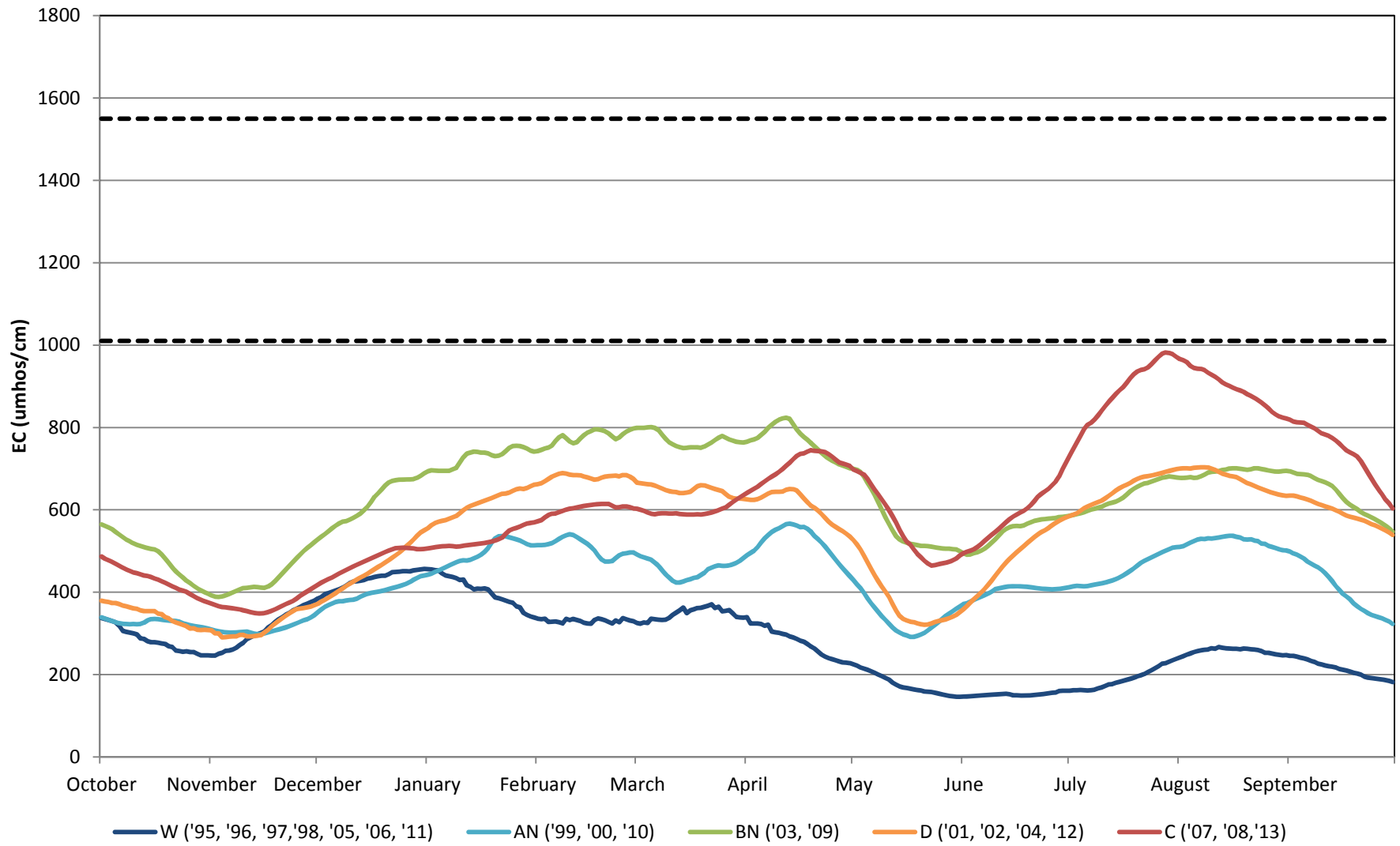
Crows-Patterson Planned Alternative Adjusted to Historical EC by Water Year Type (Oct. 1, 1995 - Sept. 30, 2013)



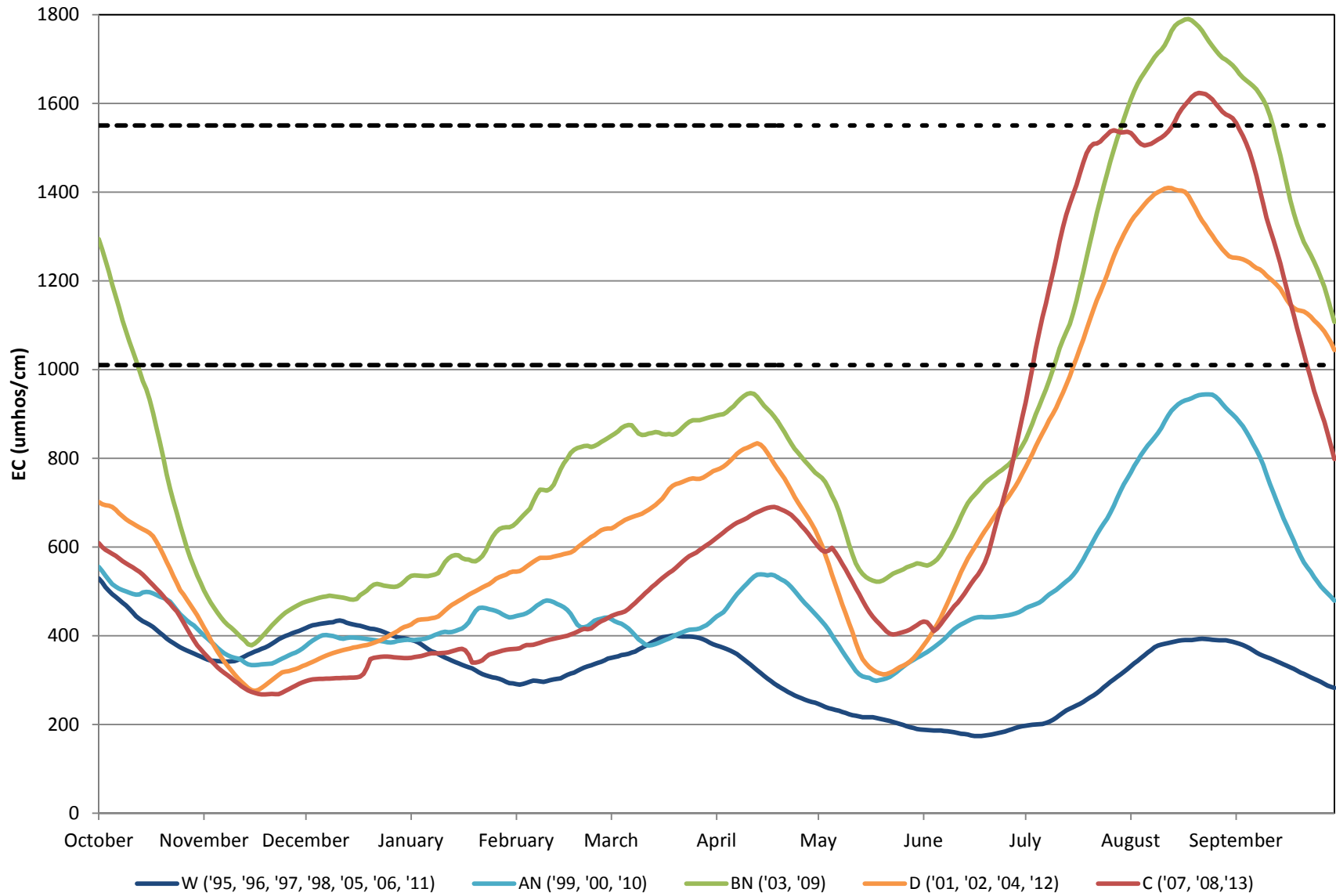
Crows Landing Maximum Treatment Alternative Running Average EC by Water Year Type (Oct. 1, 1995 - Sept. 1, 2013)



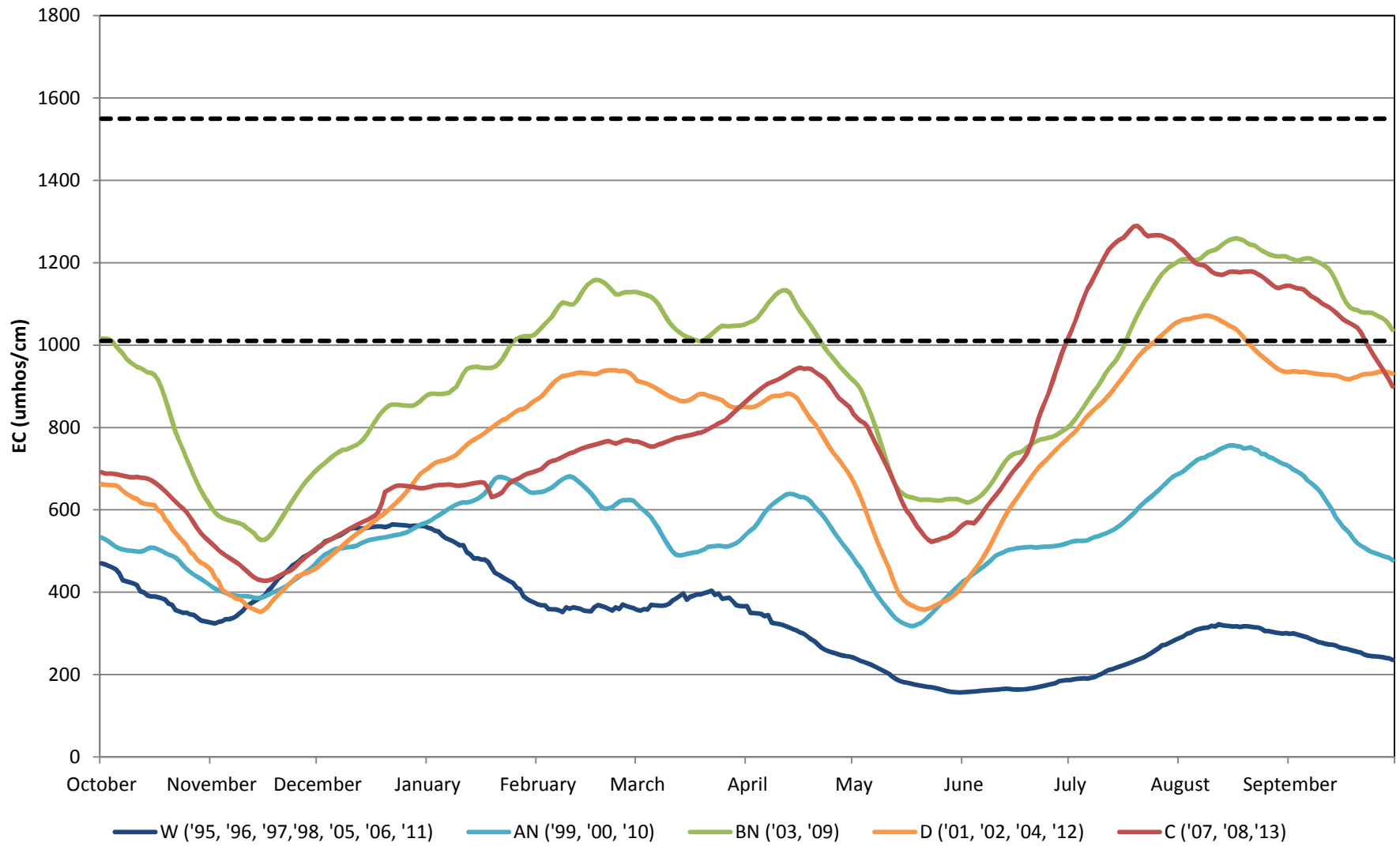
**Crows-Patterson Maximum Treatment Alternative
Adjusted to Historical EC by Water Year Type
(Oct. 1, 1995 - Sept. 30, 2013)**



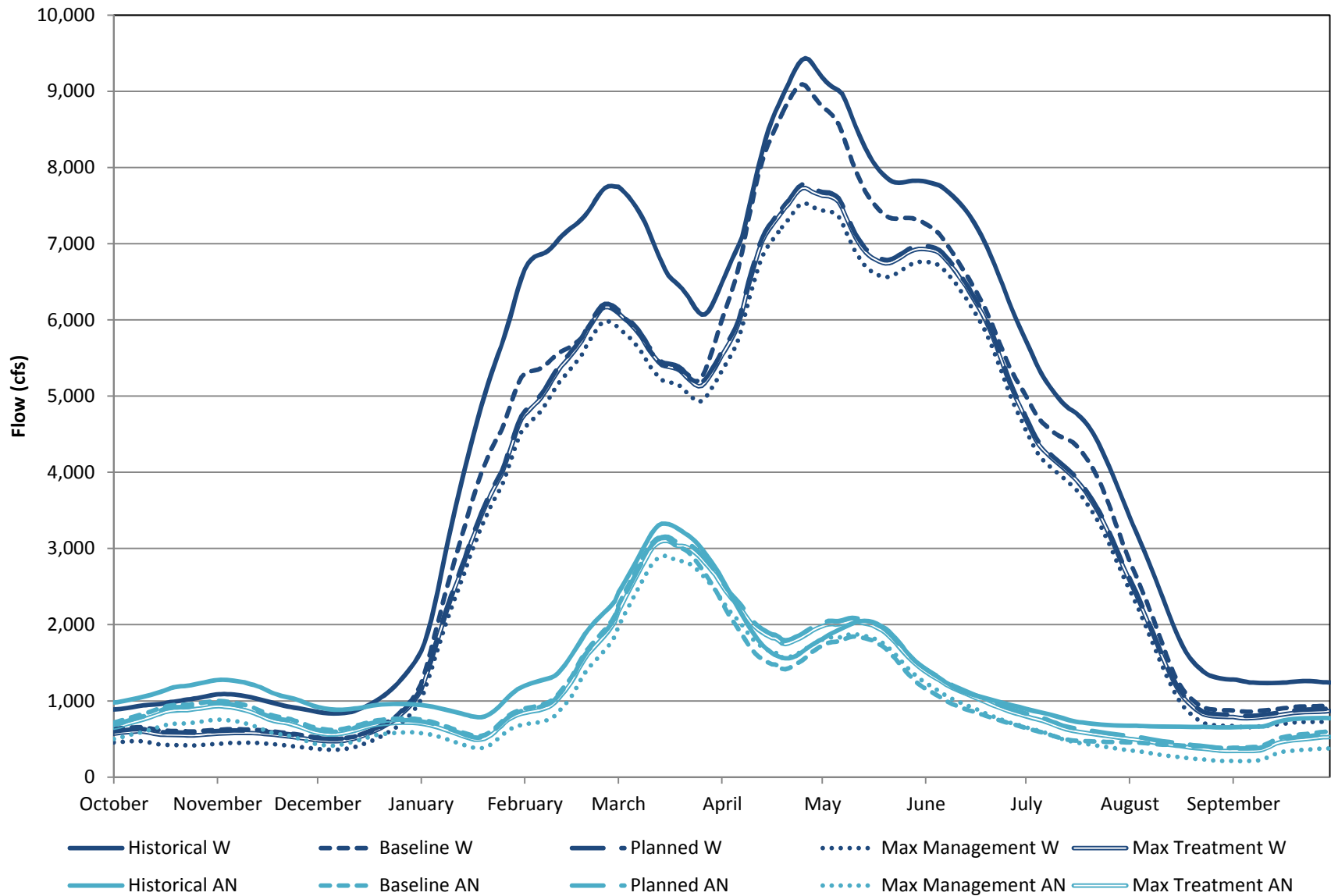
Crows Landing Maximum Management Alternative Running Average EC by Water Year Type (Oct. 1, 1995 - Sept. 1, 2013)



Crows-Patterson Maximum Management Alternative Adjusted to Historical EC by Water Year Type (Oct. 1, 1995 - Sept. 30, 2013)

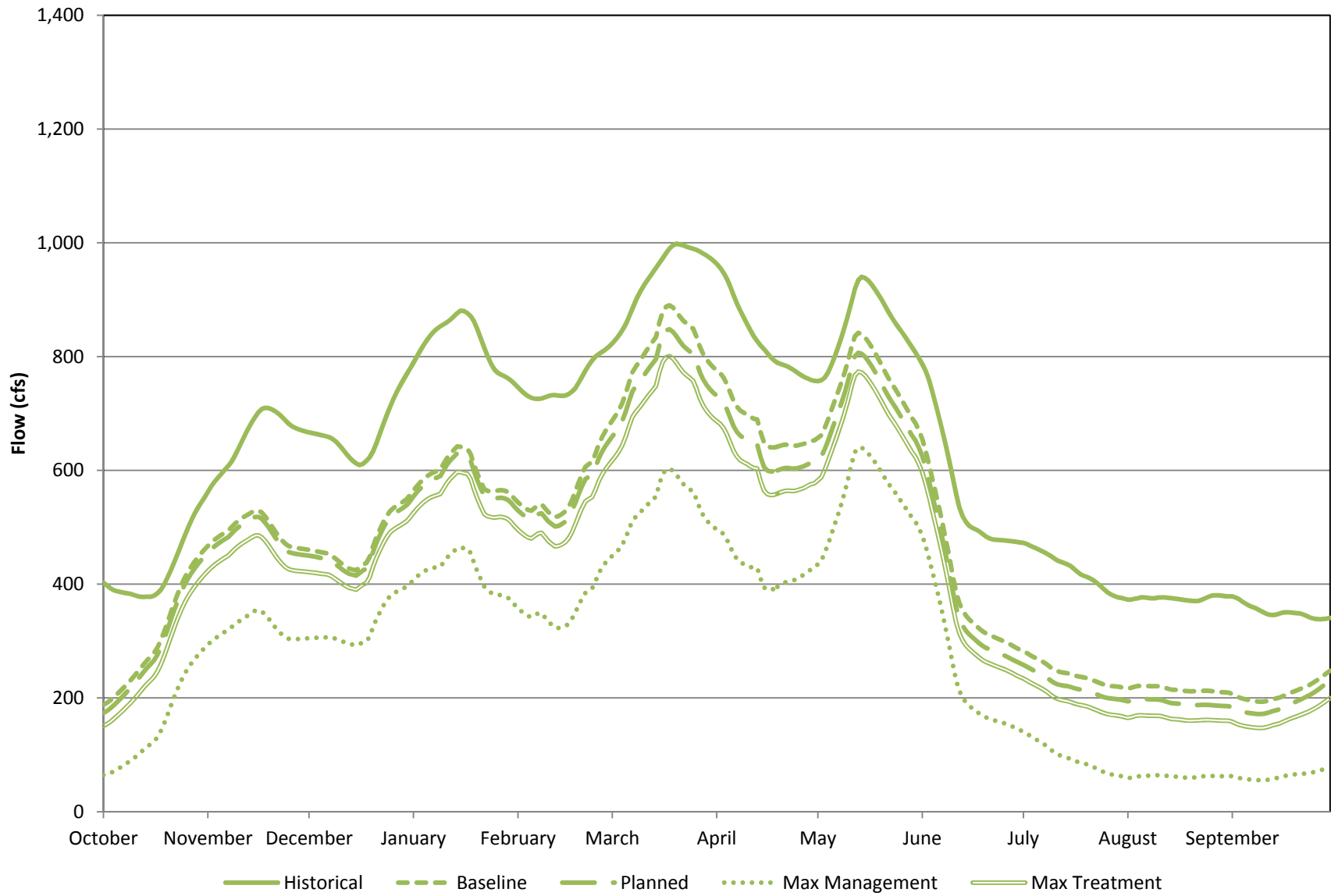


Crows Landing Wet and Above Normal Years Running Average Flow for Alternatives: (Oct. 1, 1995 - Sept. 1, 2013)



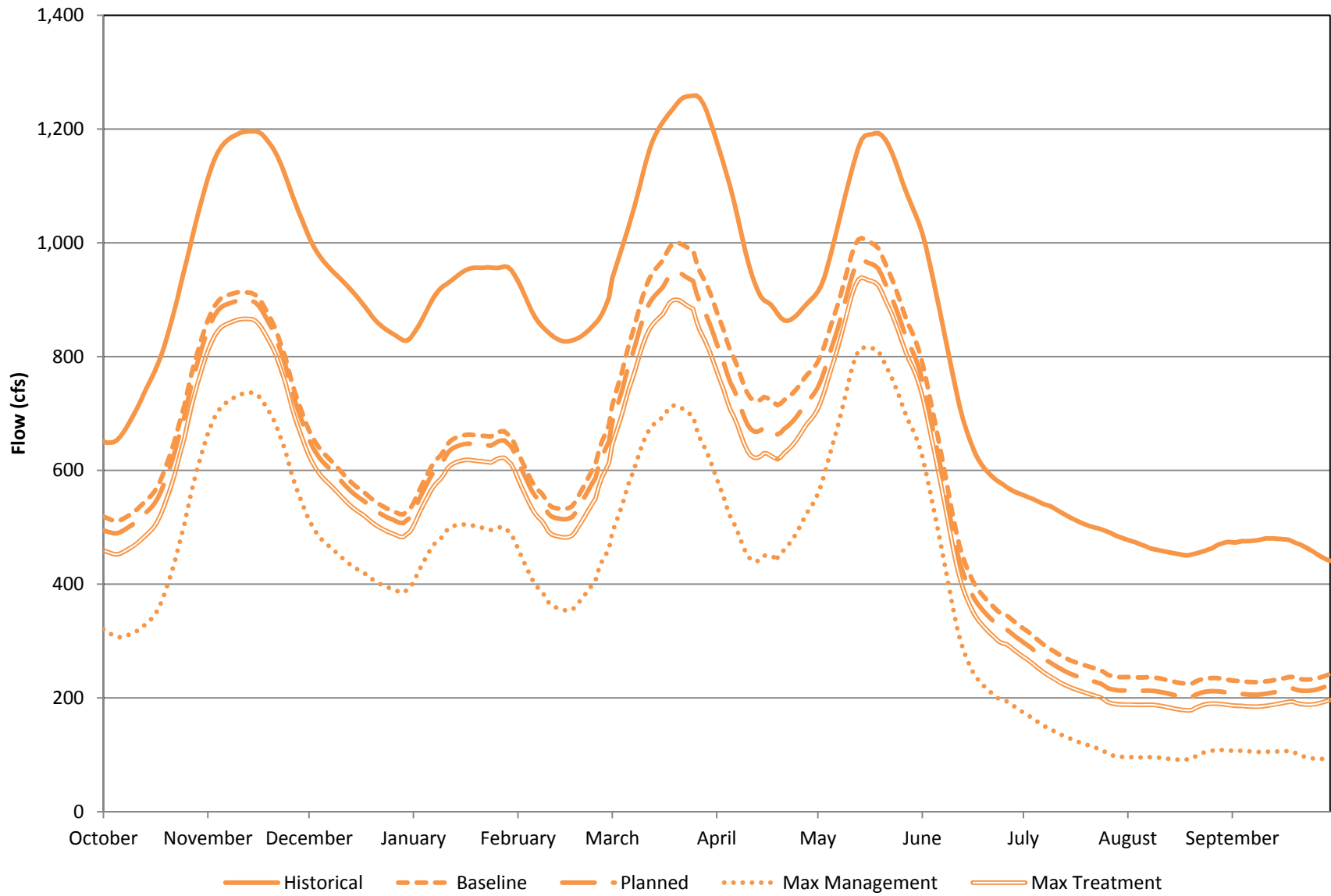
Crows Landing Below Normal

Running Average Flow for Alternatives: (Oct. 1, 1995 - Sept. 1, 2013)



Crows Landing Dry Year

Running Average Flow for Alternatives: (Oct. 1, 1995 - Sept. 1, 2013)



Crows Landing Critical Year

Running Average Flow for Alternatives: (Oct. 1, 1995 - Sept. 1, 2013)

