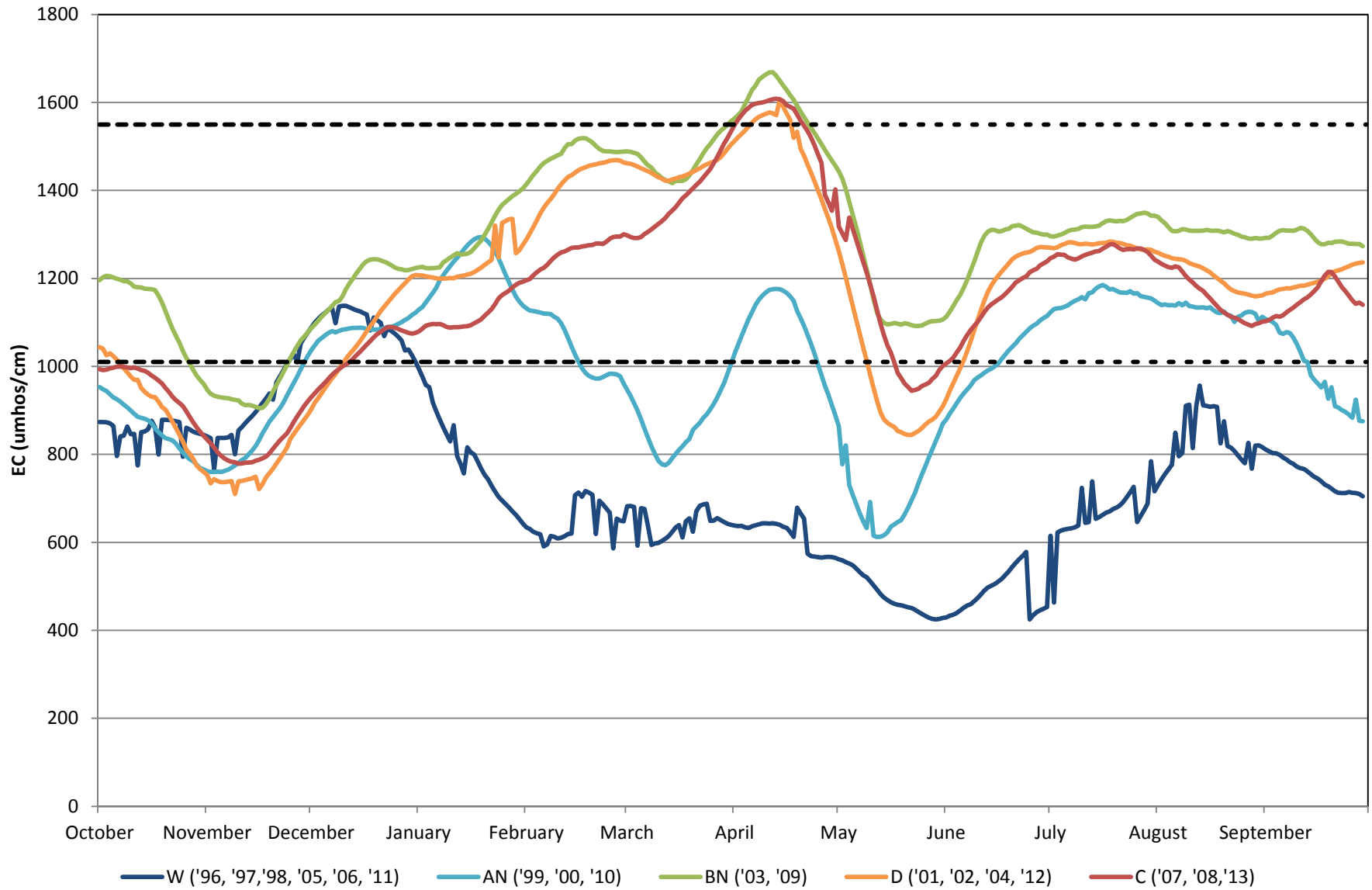
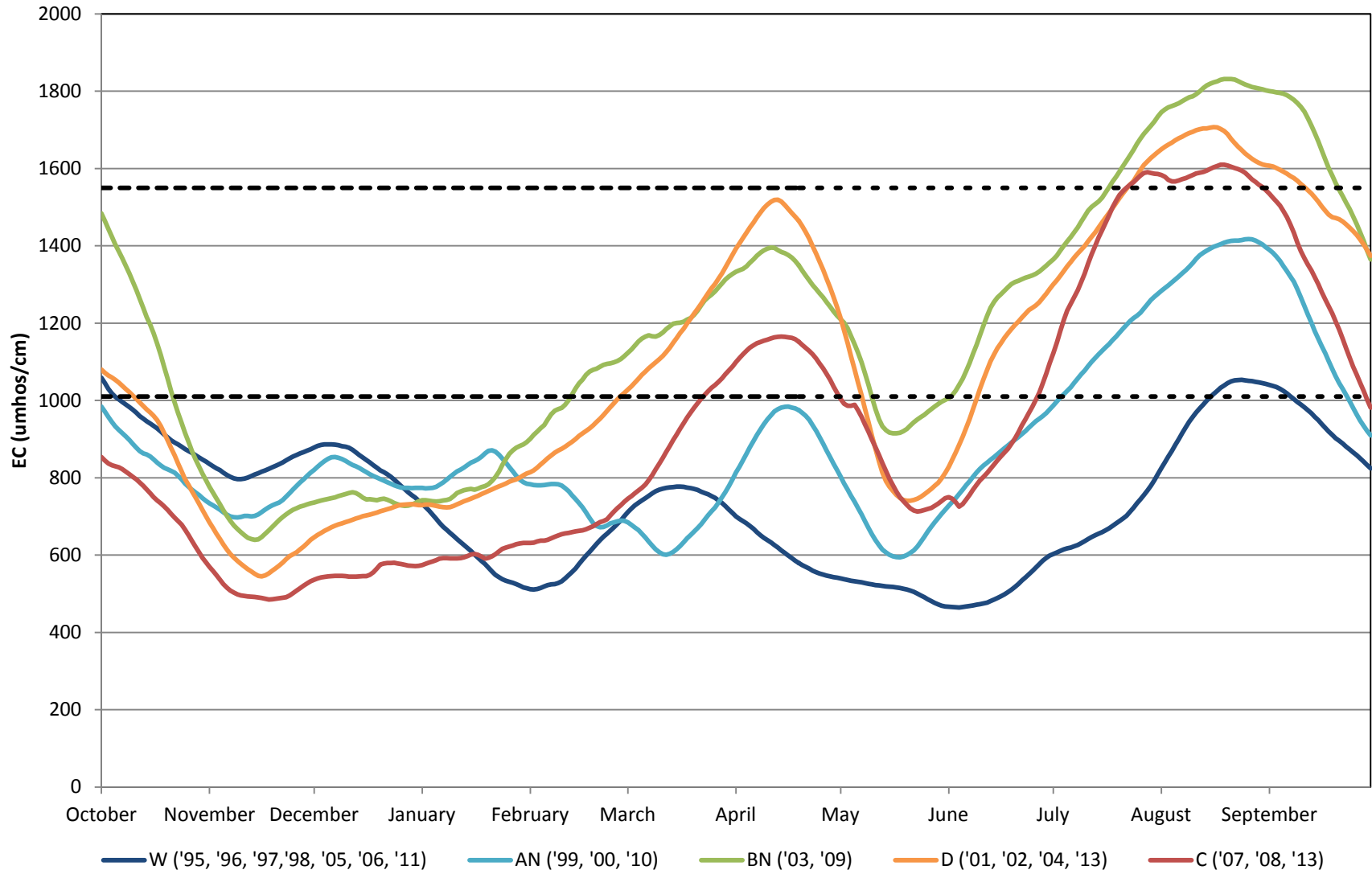


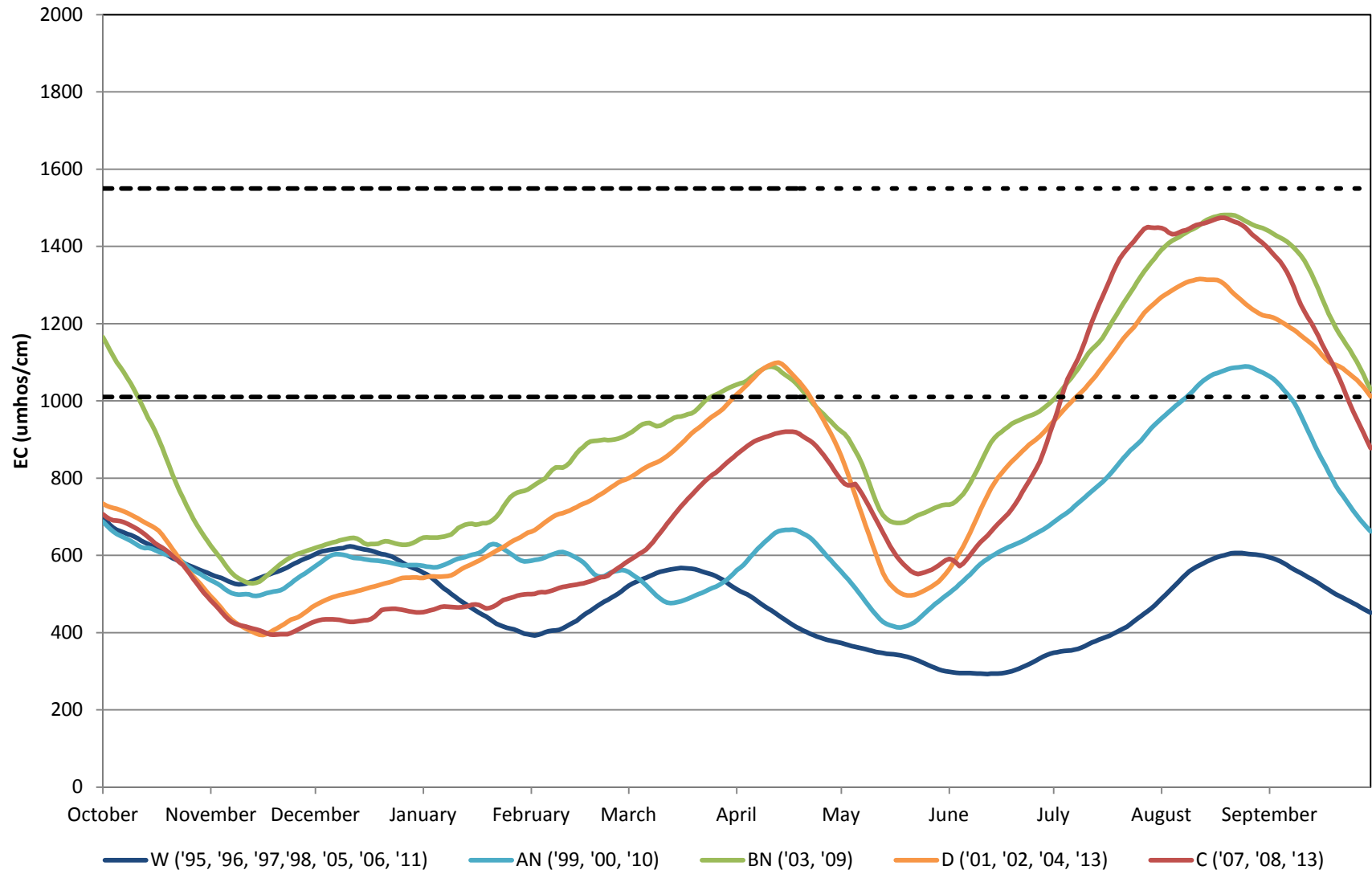
Crows-Patterson mean 30-day running average Historical EC by Water Year Type (Oct. 1, 1995 - Sept. 30, 2013)



Crows Landing mean 30-day running average "Baseline" EC by Water Year Type (Oct. 1, 1995 - Sept. 30, 2013)



Crows Landing mean 30-day running average "Planned" EC by Water Year Type (Oct. 1, 1995 - Sept. 30, 2013)



Crows-Patterson mean 30-day running average Planned bundle salinity changes applied to Historical EC by Water Year Type (Oct. 1, 1995 - Sept. 30, 2013)

