

*Boron Concentrations in the
Lower San Joaquin River at
Crows Landing
2000 – 2014*



Jim Brownell
CV-SALTS Unit

LSJR Boron Water Quality Objectives Merced River to Vernalis

Maximum Concentrations:

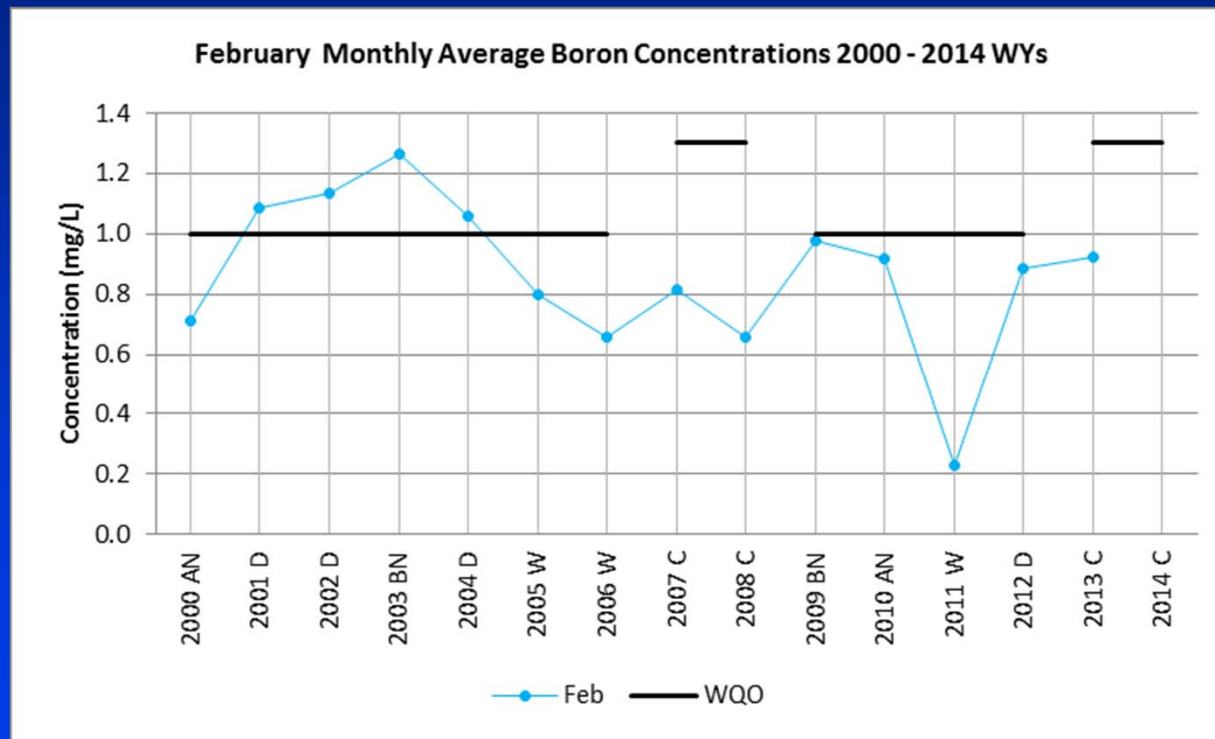
- March 15th through September 15th – 2.0 mg/L
- September 16th through March 14th – 2.6 mg/L

Monthly Average Concentrations:

- September 15th through March 14th – 1.0 mg/L
- March 15th through September 14th – 0.8 mg/L
- Critical Water Year – 1.3 mg/L

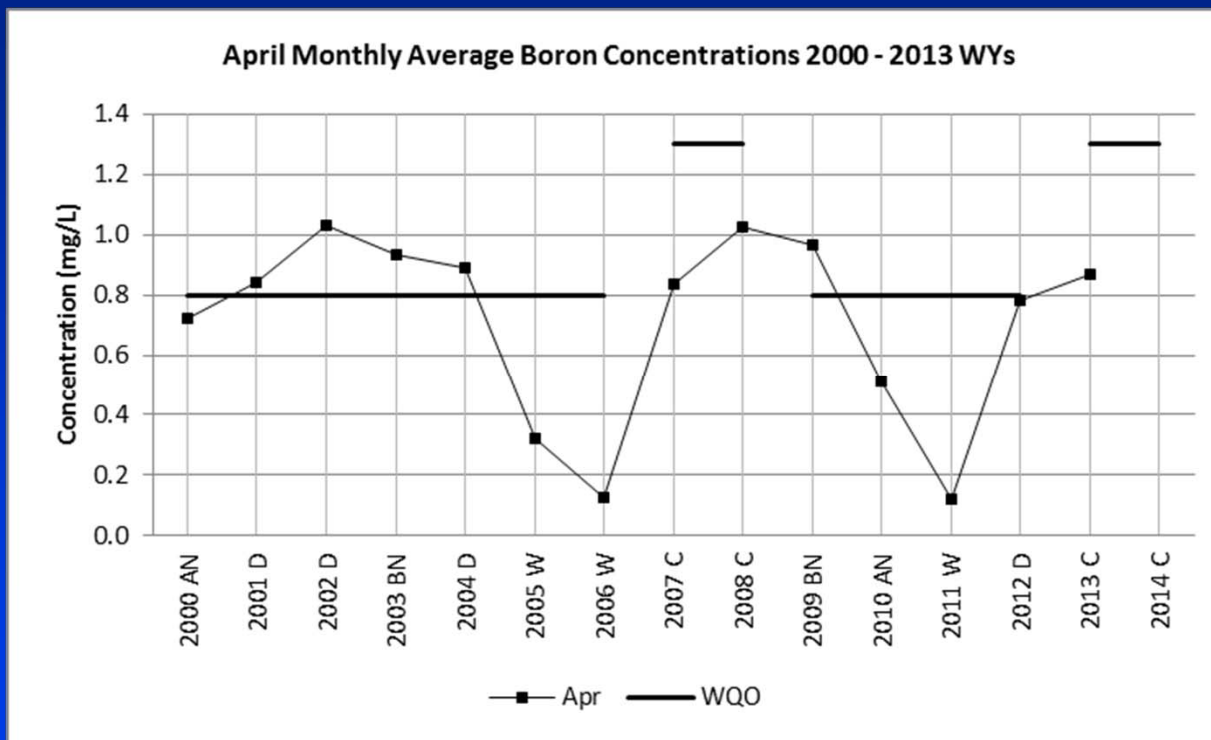
Crows Landing

Non-Irrigation Season Example



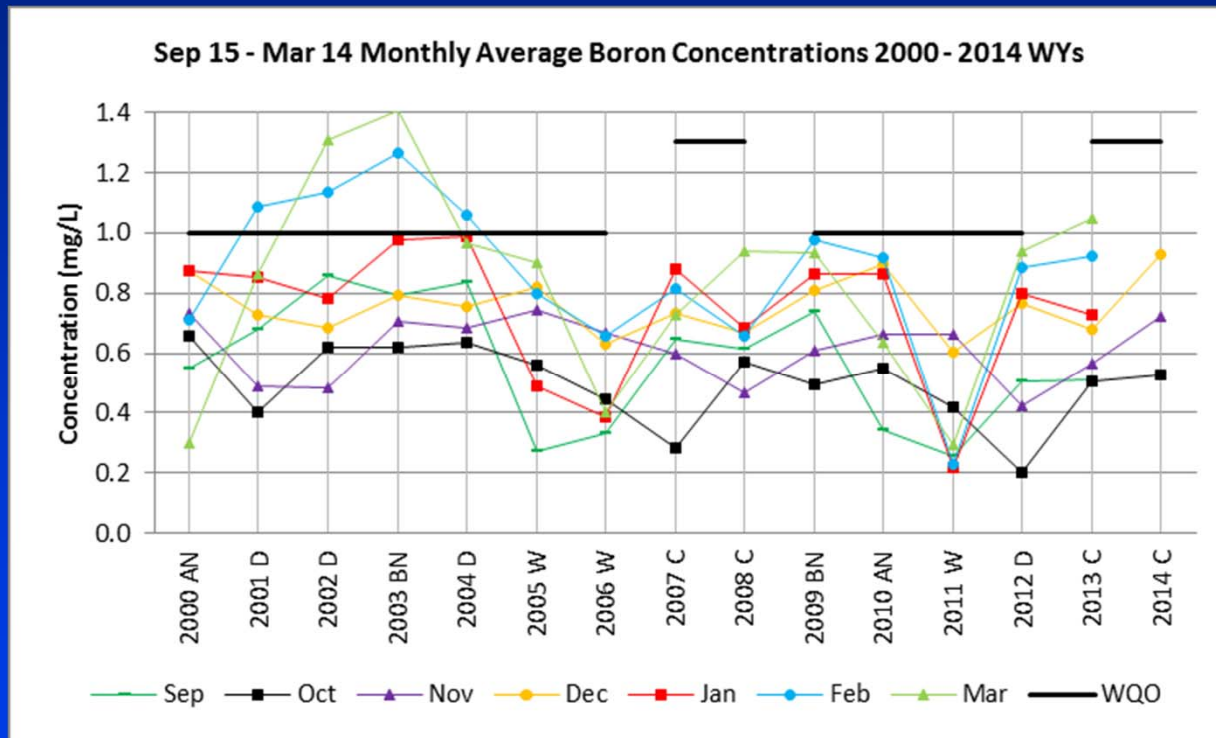
Crows Landing

Irrigation Season Example

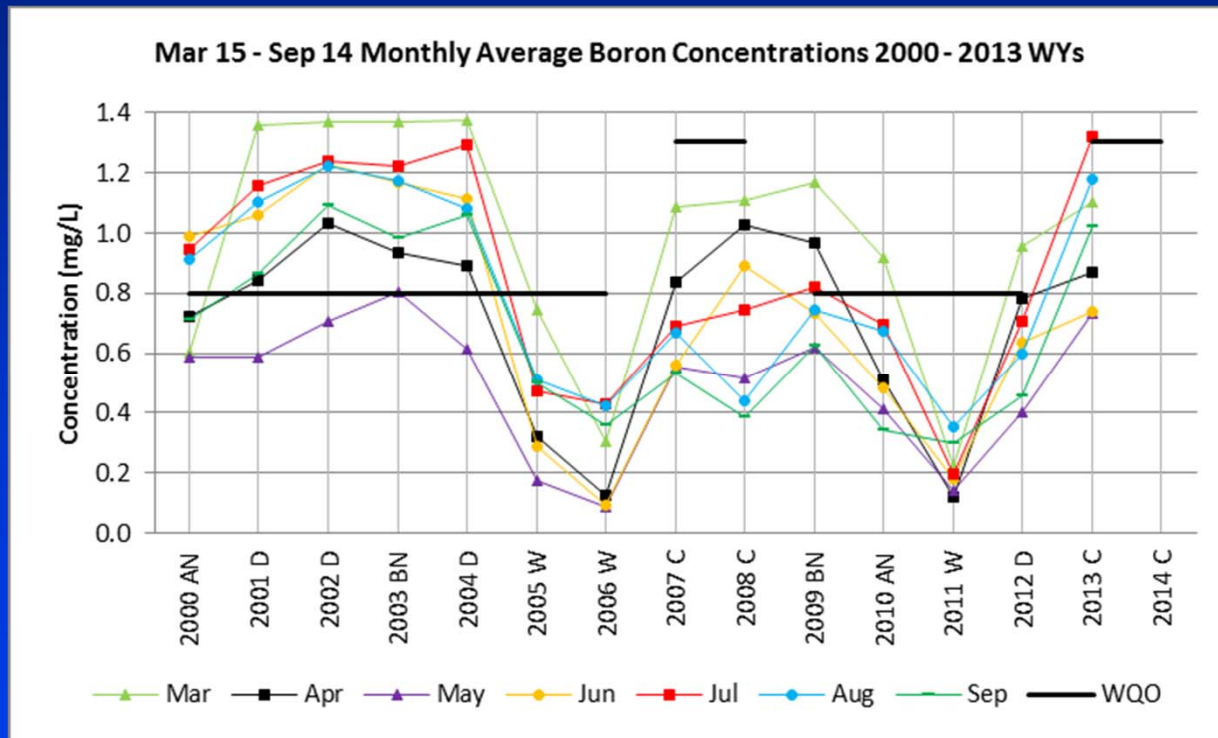


Crows Landing

Non-Irrigation Season



Crows Landing Irrigation Season



Questions

- Have conditions improved after 2004 as a result of the GBP?
- Will the new conditions hold beyond 2014?
- Will they improve?
- Will planned salinity control actions also change conditions?
- Other?

What's Next?

- Post-2004 Boron/EC ratio calculations?
- Boron compliance monitoring plan development?
- EC WQOs set, with a boron compliance monitoring plan period and a clause to reopen EC objectives if boron objectives exceeded?
- Other?