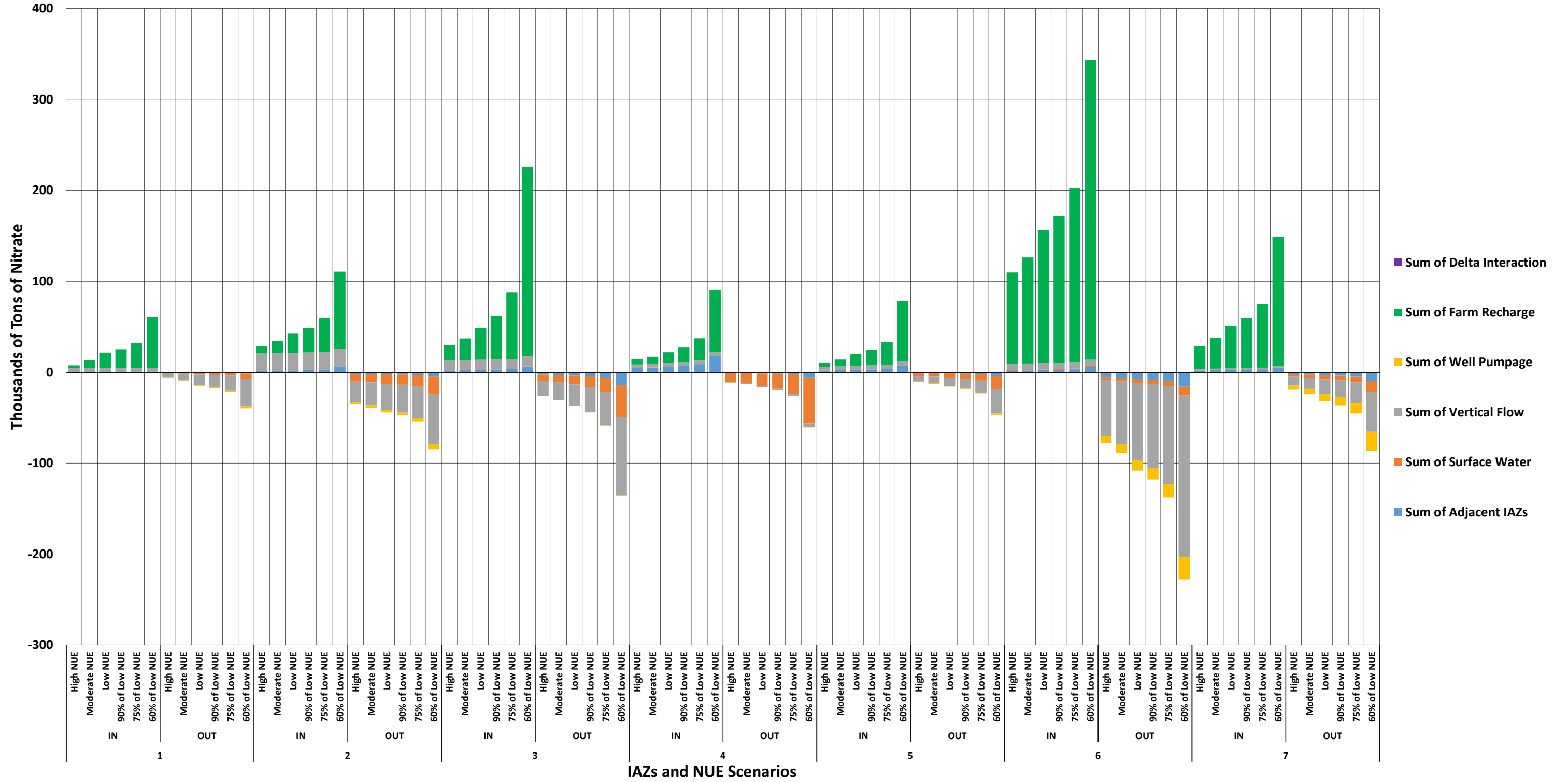
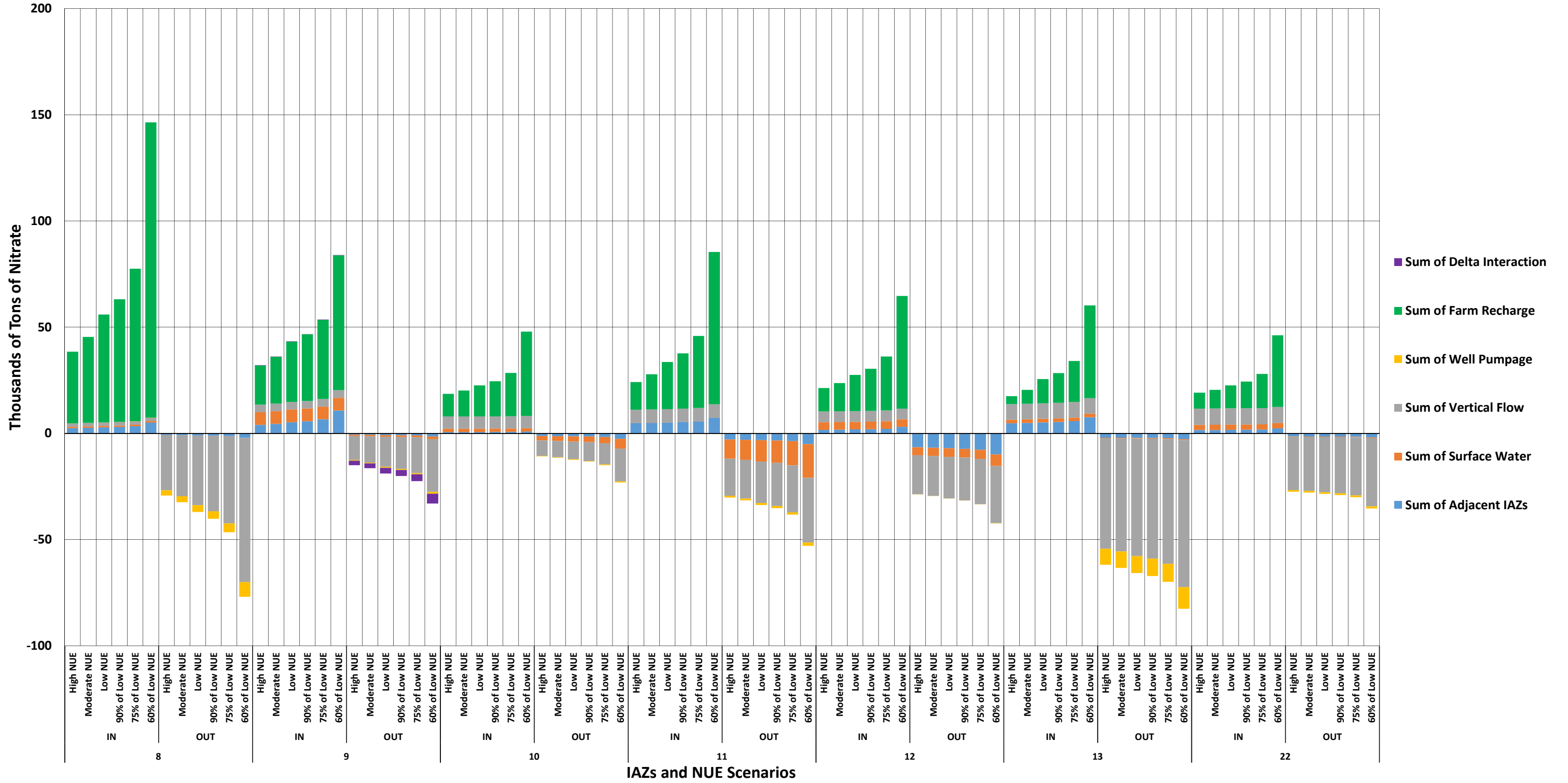


Comparing Total Inflows and Outflows of Nitrate Mass in Shallow Groundwater Over 20-Year Model Period 1983-2003

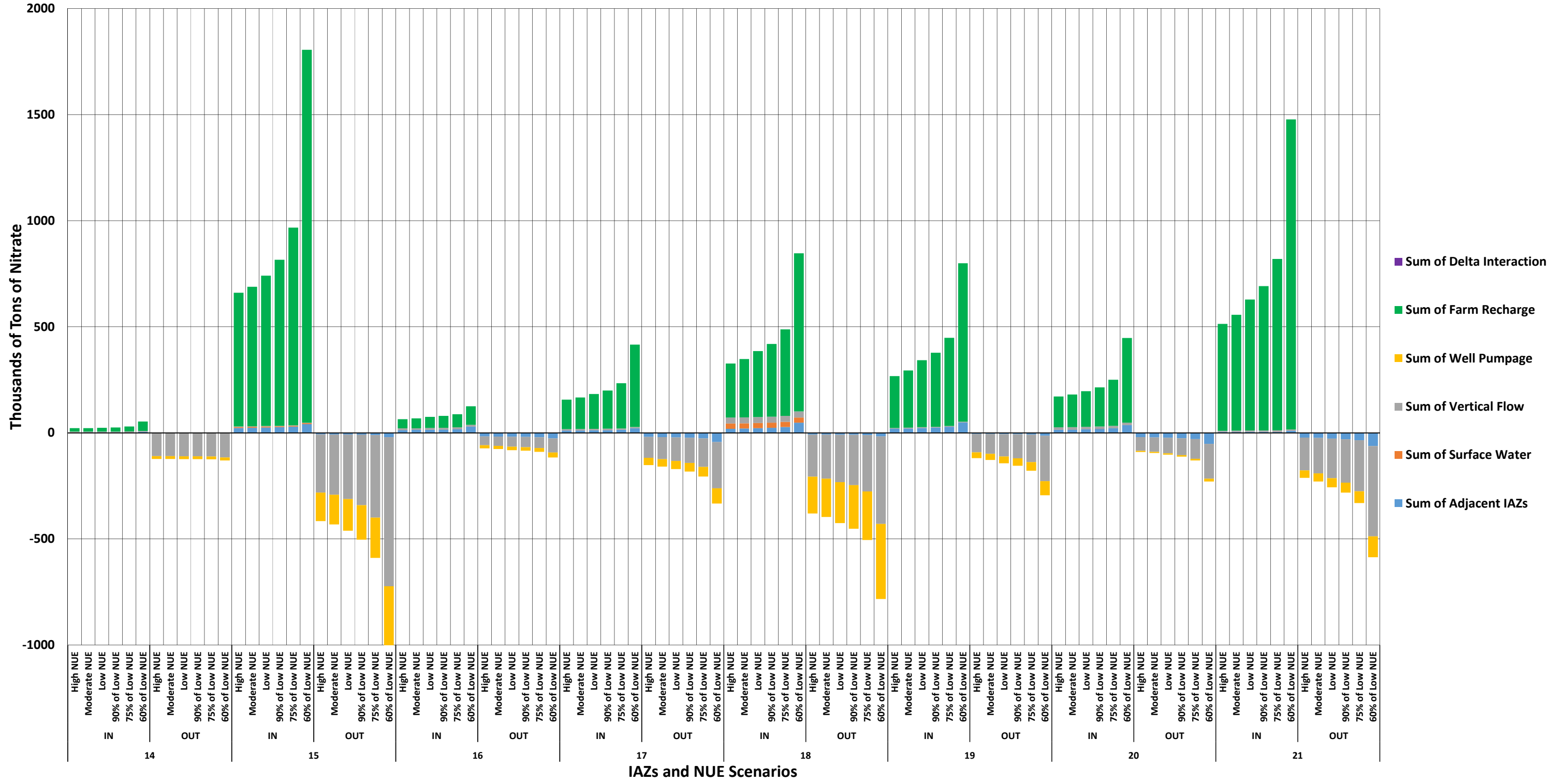
Nothern Central Valley IAZs: 1-7



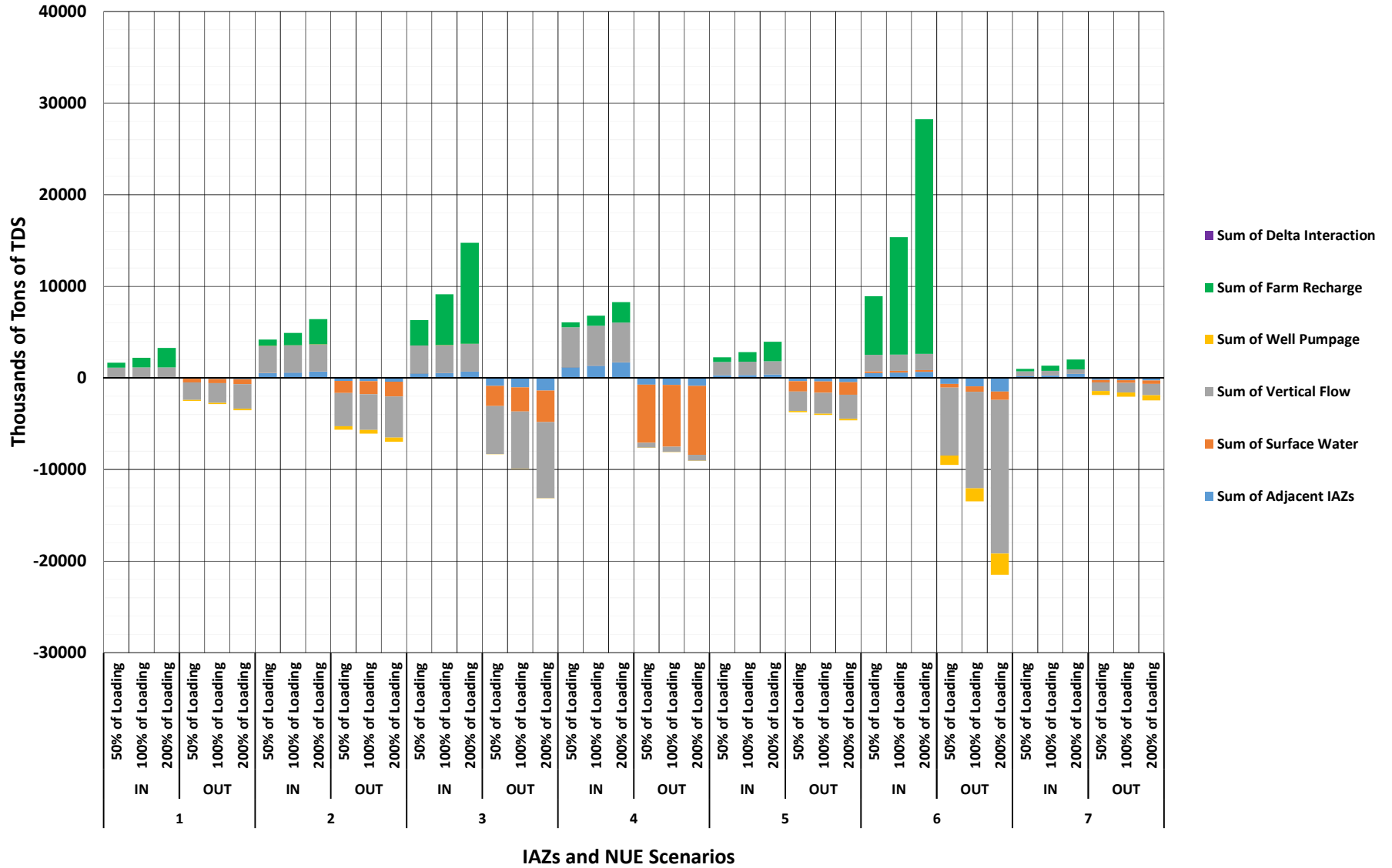
Comparing Total Inflows and Outflows of Nitrate Mass in Shallow Groundwater Over 20-Year Model Period 1983-2003 Middle Central Valley IAZs: 8-13 and 22



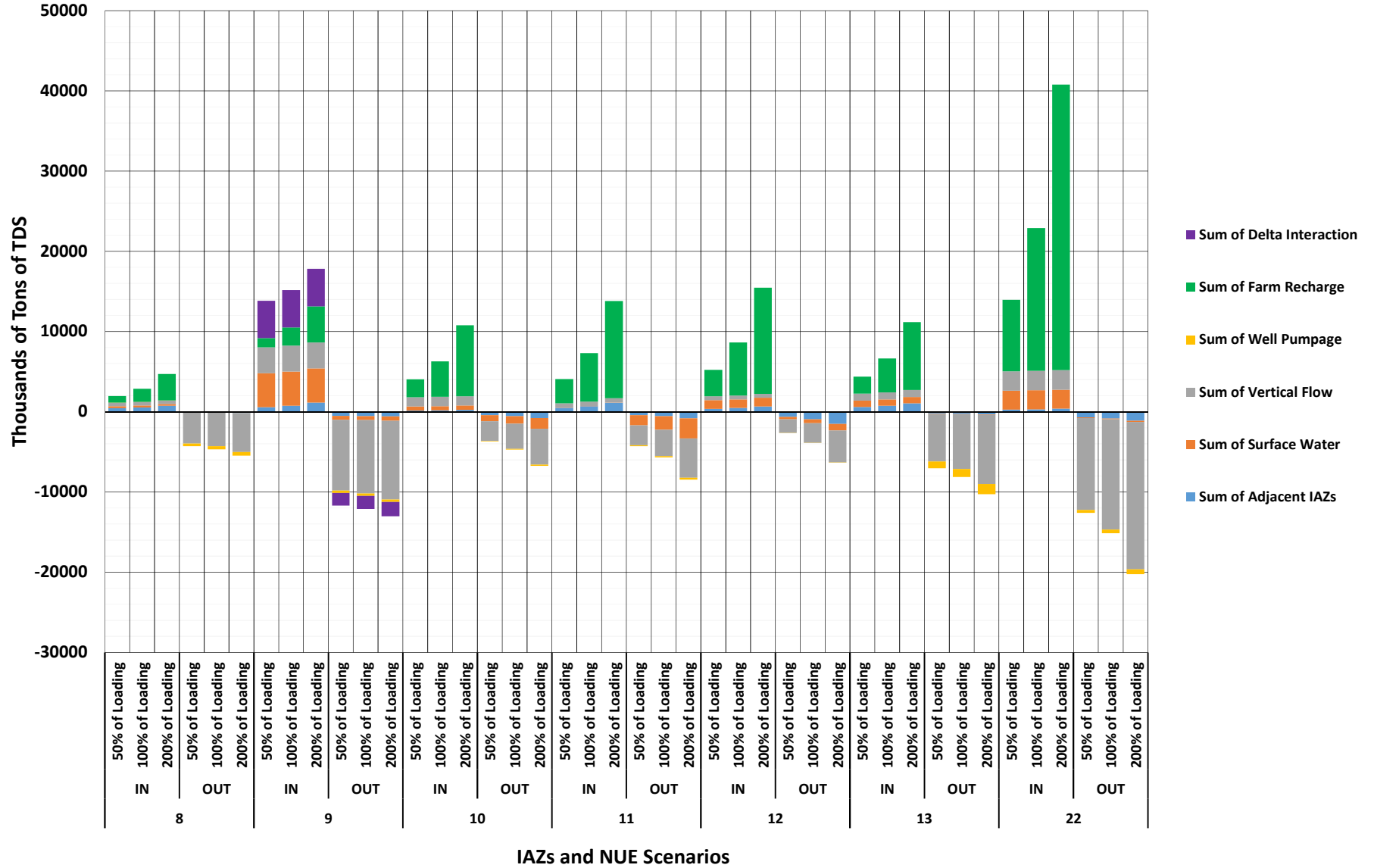
Comparing Total Inflows and Outflows of Nitrate Mass in Shallow Groundwater Over 20-Year Model Period 1983-2003 Southern Central Valley IAZs: 14-21



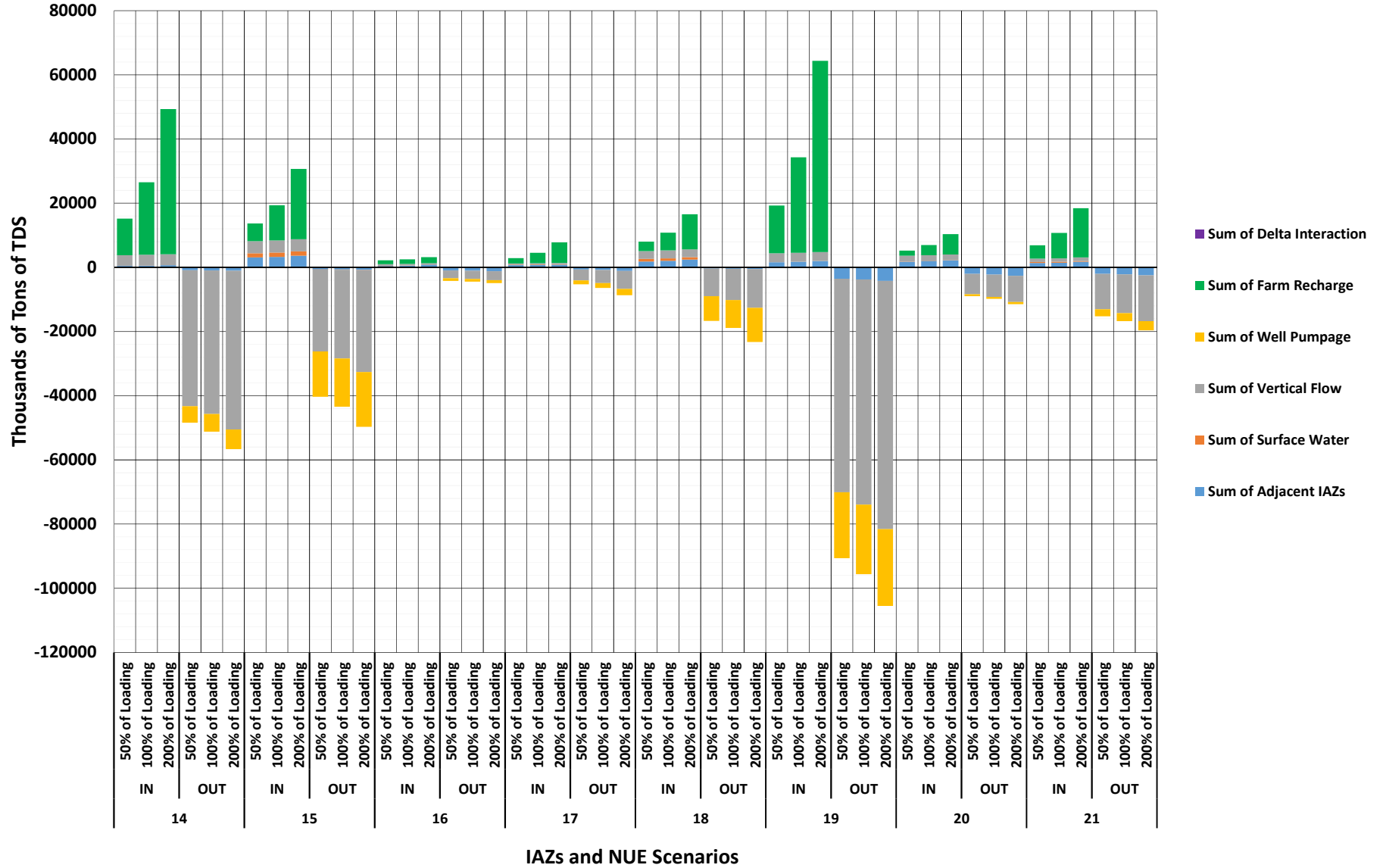
**Comparing Total Inflows and Outflows of TDS Mass in Shallow Groundwater Over 20-Year Model Period 1983-2003
Northern Central Valley IAZs: 1-7**



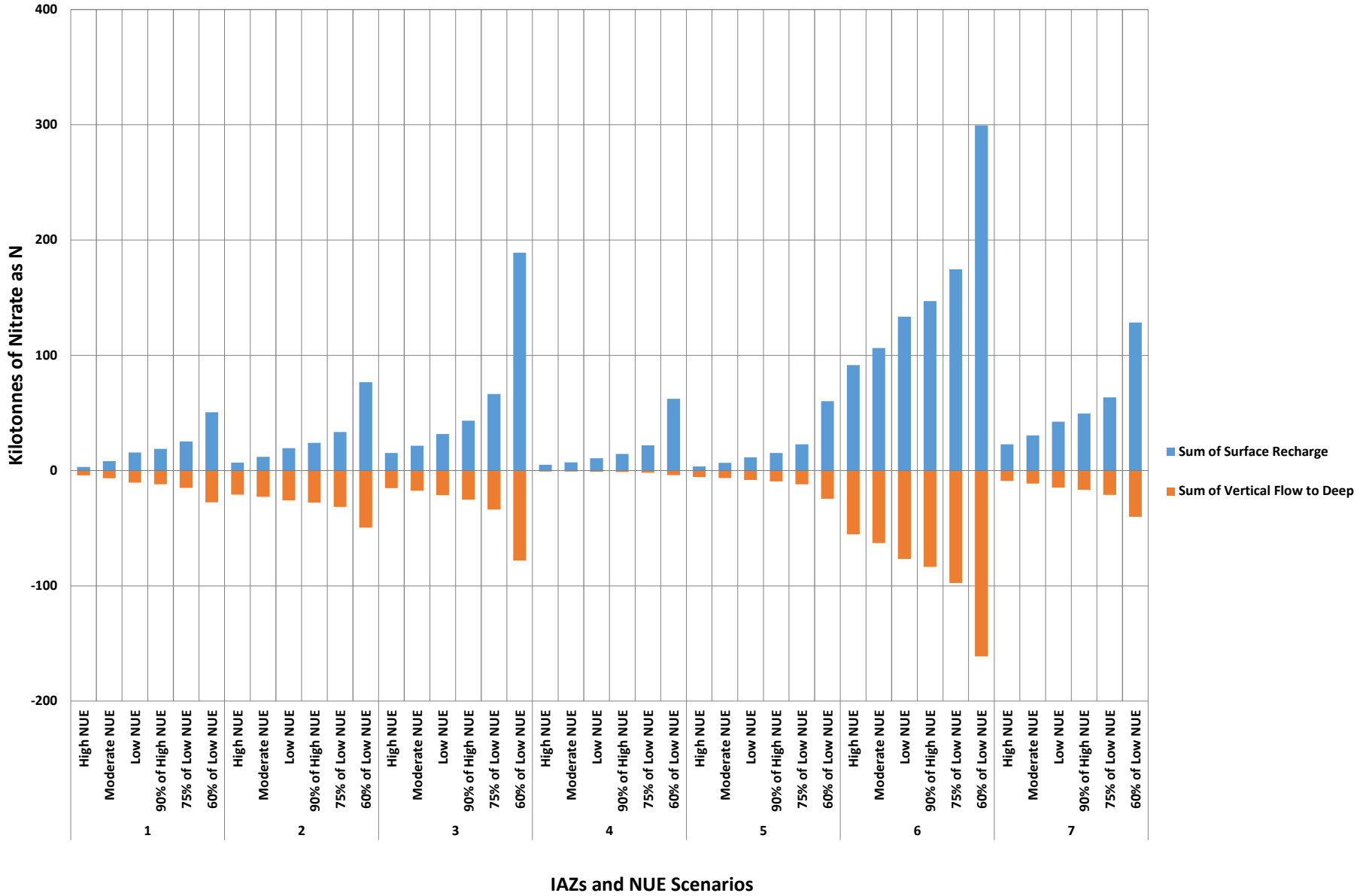
**Comparing Total Inflows and Outflows of TDS Mass in Shallow Groundwater Over 20-Year Model Period 1983-2003
Middle Central Valley IAZs: 8-13, 22**



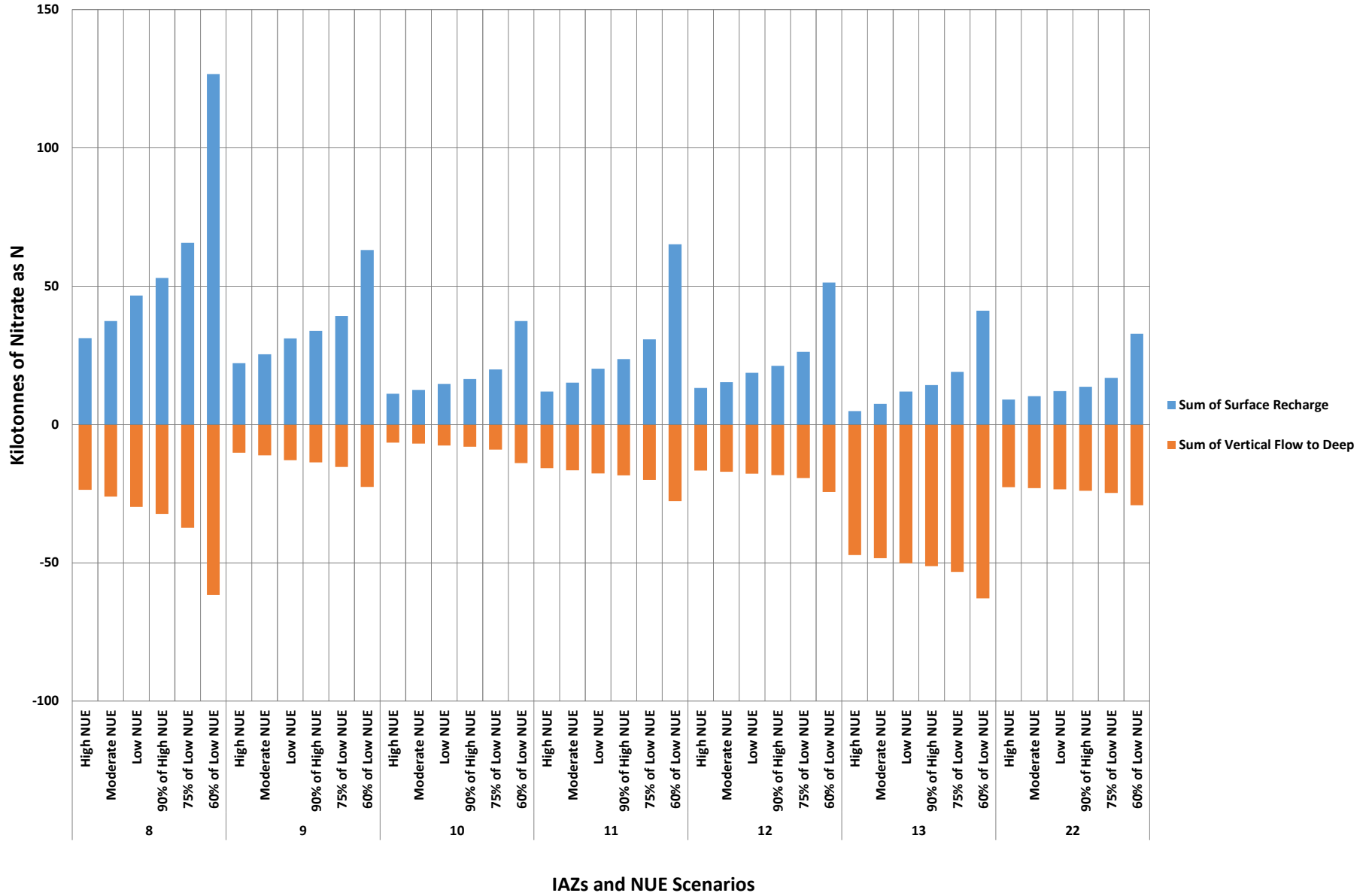
**Comparing Total Inflows and Outflows of TDS Mass in Shallow Groundwater Over 20-Year Model Period 1983-2003
Southern Central Valley IAZs: 14-21**



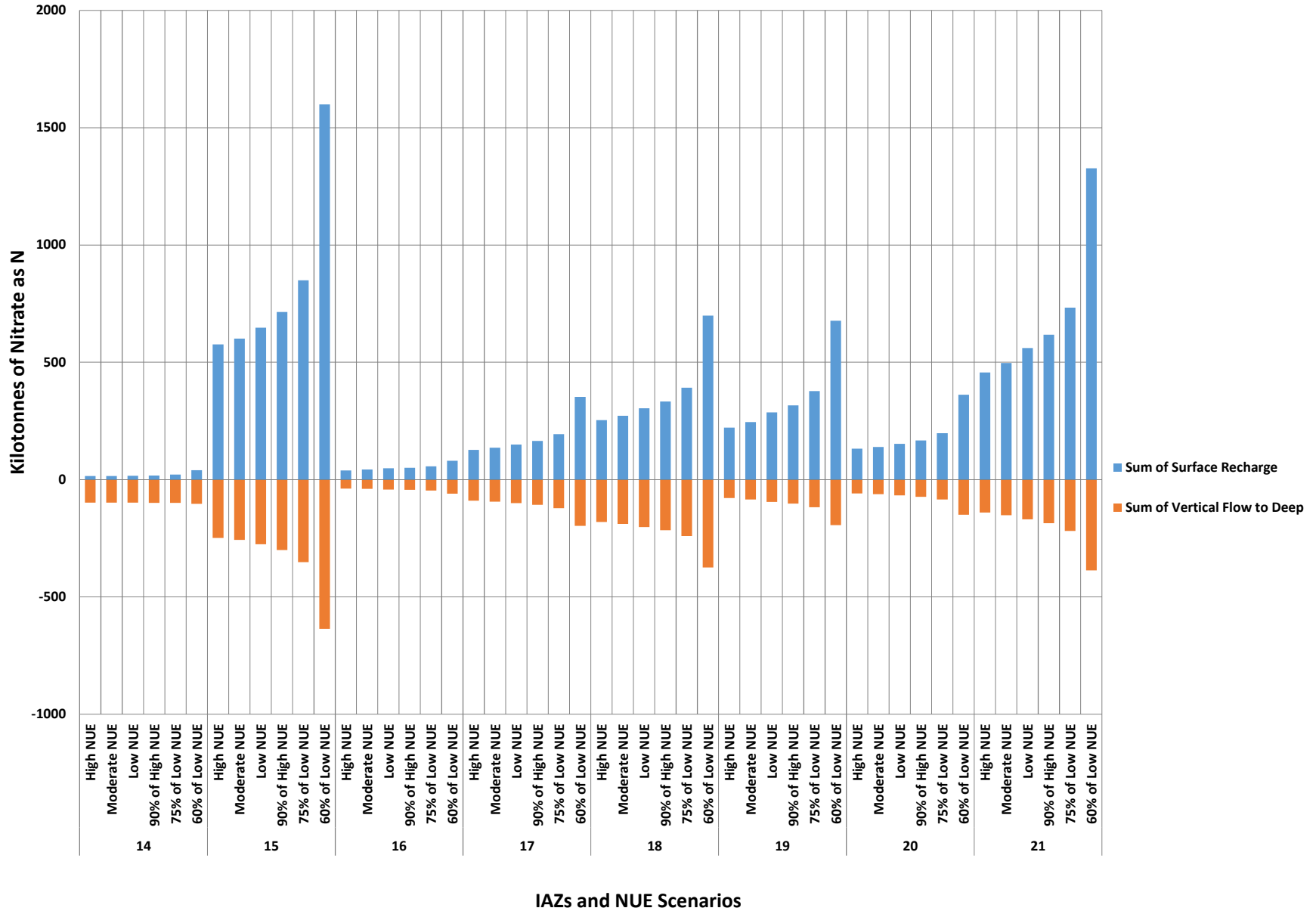
Comparing Total Nitrate Surface Recharge and Vertical Flow to Deep Over 20-Year Model Period 1983-2003
 Northern Central Valley IAZs: 1-7



**Comparing Total Nitrate Surface Recharge and Vertical Flow to Deep Over 20-Year Model Period 1983-2003
Middle Central Valley IAZs: 18-13 and 22**

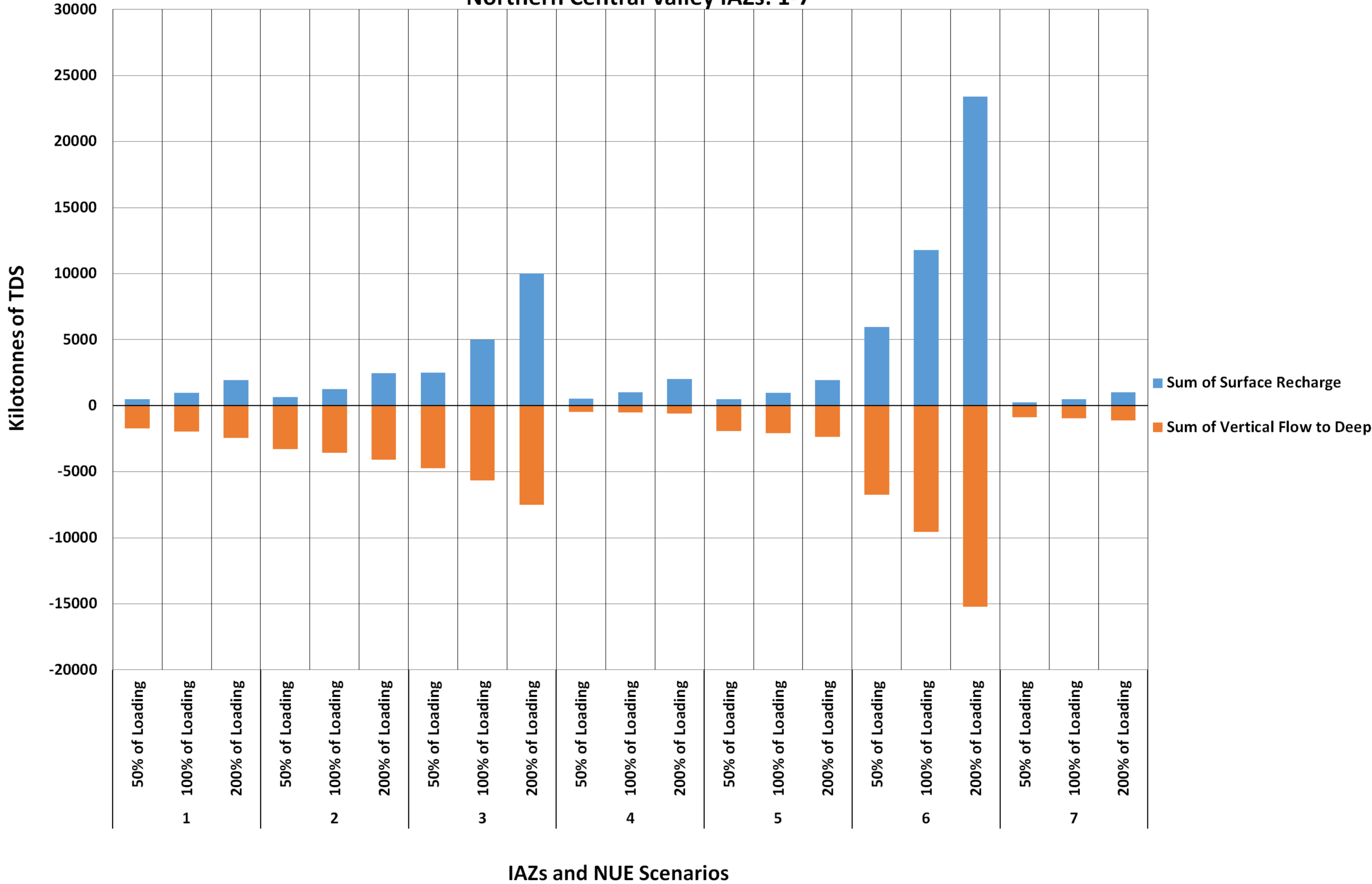


**Comparing Total Nitrate Surface Recharge and Vertical Flow to Deep Over 20-Year Model Period 1983-2003
Southern Central Valley IAZs: 14-21**



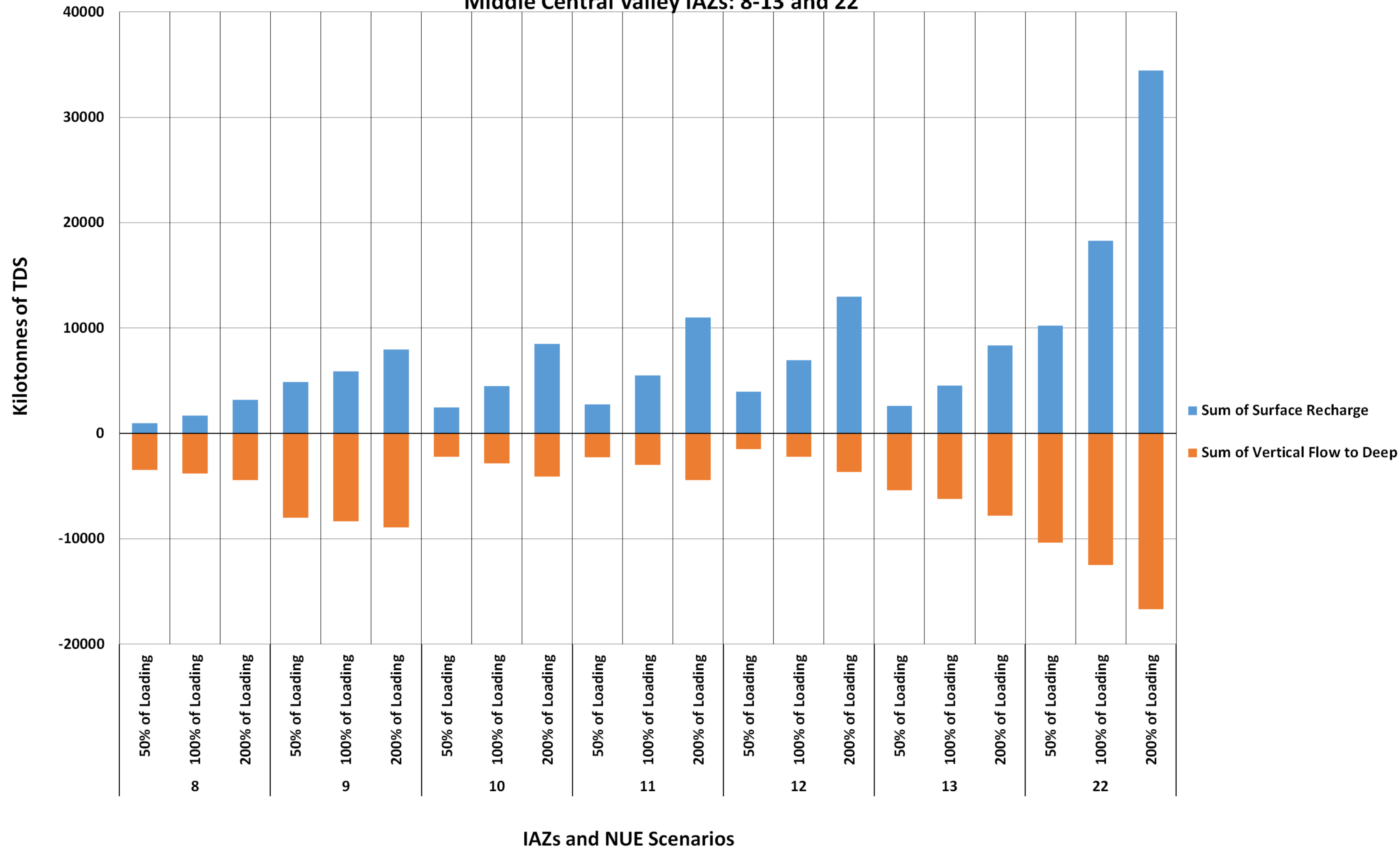
Comparing Total TDS Surface Recharge To Shallow Part of Aquifer System and Vertical Flow to Deep Aquifer system Over 20-Year Model Period 1983-2003

Northern Central Valley IAZs: 1-7



Comparing Total TDS Surface Recharge To Shallow Part of Aquifer System and Vertical Flow to Deep Aquifer system Over 20-Year Model Period 1983-2003

Middle Central Valley IAZs: 8-13 and 22



Comparing Total TDS Surface Recharge To Shallow Part of Aquifer System and Vertical Flow to Deep Aquifer system Over 20-Year Model Period 1983-2003

Southern Central Valley IAZs: 14-21

