

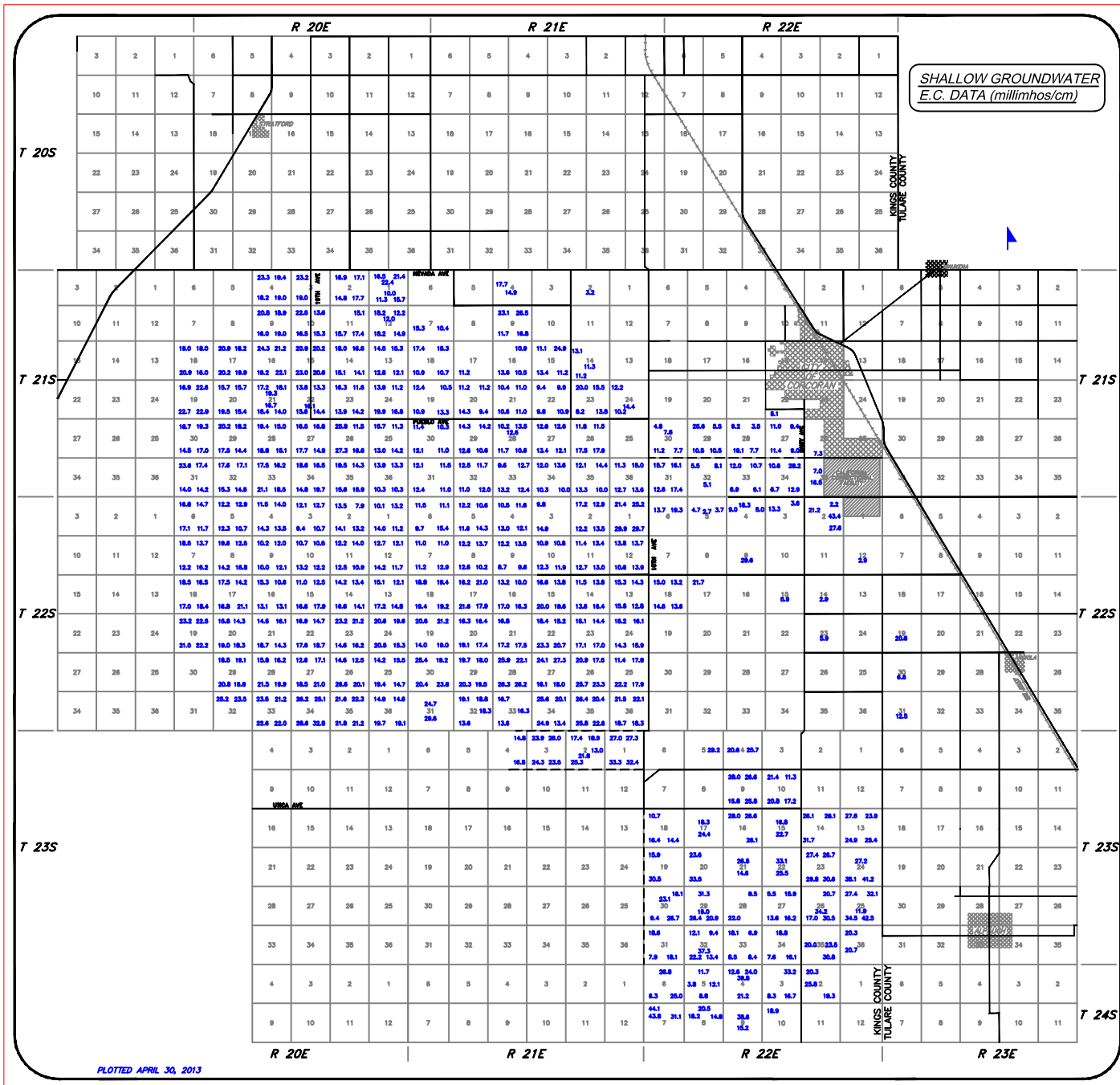
Attachment I

Water Quality – Backhoe Excavation Data &
Methodology

**Methodology for the sampling of shallow groundwater from excavation pits for
EC determination (in the Tulare Lakebed)**

The methodology used to collect shallow groundwater samples for EC determination is as follows:

- Representative sampling locations are identified within each field.
- Backhoes are used to excavate a pit down to the first encountered groundwater, typically to a depth of 8 to 12 feet.
- Samples of the shallow ground water are collected within less than 1 day by dipping a clean container into the groundwater.
- Once the sample is collected, the pit is back-filled.
- One of three laboratories was used to analyze data.
 - JG Boswell Co. Laboratory in Corcoran, CA.
 - Valley Tech Agricultural Services Laboratory in Tulare, CA.
 - JMLord Inc. Laboratory in Fresno, CA.
- The laboratories analyze the samples within the maximum holding time.



SHALLOW GROUNDWATER
E.C. DATA (millimhos/cm)

PLOTTED APRIL 30, 2013

R 20E R 21E R 22E R 23E

KINGS COUNTY
TULARE COUNTY

KINGS COUNTY
TULARE COUNTY

T 20S

T 21S

T 22S

T 23S

T 21S

T 22S

T 23S

T 24S