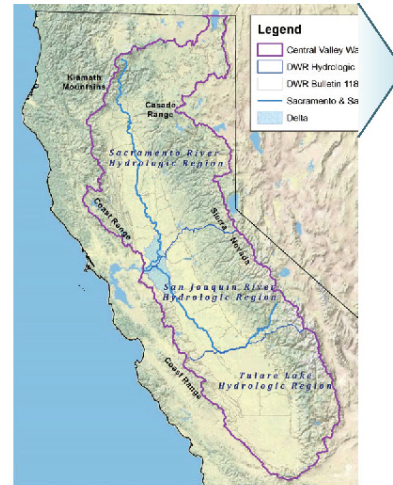


TECHNICAL WORKFLOW

- Conceptual Overview of P&O Study Workflow for **Technical Tasks**
- Workplan includes additional regulatory, administrative, and outreach tasks



Primarily Years 3-4

Primarily Years 5-10

ESTABLISH THE FOUNDATION

- Characterize Hydrologic Regions
 - Salt Conditions
 - Salt Loading
 - Salt Management Practices
 - Salt Sustainability Gap
- Develop Numeric Model Tool
- Salinity Target Development
- Special Studies

IDENTIFY PLANNING AREAS

- Determine Appropriate Scale for Salt Management Planning
- Characterize Selected Planning Areas

ANALYZE ALTERNATIVES FOR PLANNING AREAS

- Identify and Evaluate Alternatives
- Select Preferred Alternative
- Prepare Salt Management Plans

Primarily Years 1-4

SALT MANAGEMENT PLAN

TABLE OF CONTENTS

1. Planning Area
2. Existing/Planned Salt Management Projects
3. Non-Physical Projects
4. Physical Projects with Conceptual Designs
5. Estimated Costs
6. Phase 2 Implementation Schedule

Task No.	Technical Tasks	Activity Schedule			
		Year 1	Year 2	Year 3	Year 4
3.1/3.5	Characterize Hydrologic Regions (existing conditions, sources of salt loading, salt management/source control practices)				
3.6/3.7	Define Salt Planning Areas/Salt Sustainability Analysis				
3.2	Establishment of Appropriate Salt Management Targets ¹				
3.3	Numeric Tool Development				
3.4	Central Valley Water/Salt Management Requirements & Responsibilities				
3.8.1	Central Valley Recharge Planning ¹				
3.8.2	Mature/Emerging Technologies for Salt Treatment				
3.8.3	Trace Constituent Study				
4.1.3	Salt Management Area Development ¹				
4.2	Identify/Quantify Benefits from Potential Non-Physical Projects ¹				

¹ Additional budget for task in Year 5