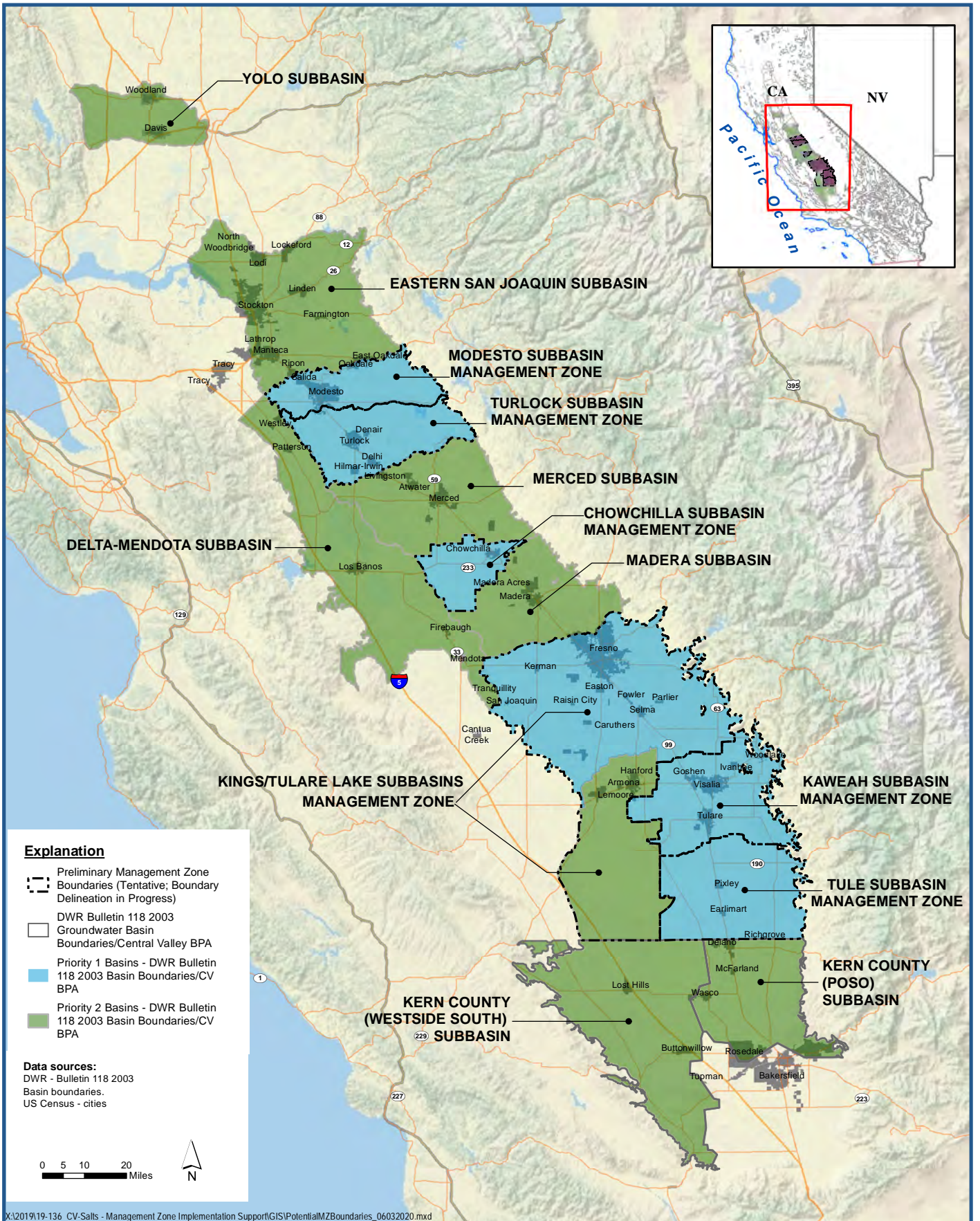


The development of Management Zones in the six Priority 1 subbasins is underway. There are no approved management zones established yet. The information provided below is preliminary and will be kept updated.

Priority 1 Subbasin <i>Note: Each subbasin listed below is linked to a map of that subbasin.</i>	Initial Contacts for Management Zone Formation
Modesto Subbasin and Turlock Subbasin Note: The current intent is to form one Management Zone for these subbasins.	Parry Klassen East San Joaquin Water Quality Coalition (559) 288-8125, klassenparry@gmail.com J.P. Cativiela Dairy Cares (916) 476-5153, jcativiela@cogentcc.com
Chowchilla Subbasin	Christina Beckstead Madera County Farm Bureau (559) 674-8871, (559) 674-0529 cbeckstead@maderafb.com Sarah Woolf Water Wise (559) 341-0174, sarahwoolf@me.com
Kings Subbasin The current intent is to form two Management Zones for the subbasin: <ol style="list-style-type: none"> 1. Kings River East Groundwater Sustainability Agency (GSA)/Alta Irrigation District (AID) (KRE/AID Management Zone Pilot) 2. Remainder of Kings Subbasin 	Charlotte Gallock Kings River Conservation District (559) 237-5567 x105, cgallock@krcd.org Debra Dunn Kings River Conservation District (559) 237-5567 ext. 135, ddunn@krcd.org
Kaweah Subbasin	Sarah Rutherford Provost & Pritchard (559) 636-1166, SRutherford@ppeng.com
Tule Subbasin	David De Groot Tule Basin Water Quality Coalition (559) 802-3052, davidd@4-creeks.com Don Tucker (559) 802-3052, don.tucker@4-creeks.com



Preliminary Management Zone Boundaries (DRAFT)