

CV-SALTS Agricultural Zone Mapping-Ag Group Meeting

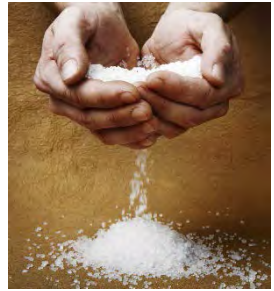
When: Wednesday, November 13, 2013 from 1:30 to 4:00 PM

Location: Sacramento Regional Sanitation District Offices
Sunset Maple Room 10060 Goethe Rd, Sacramento 95827

Conference #: (712) 432-0360 Participant Code: 927571#

Go-To-Meeting Link: <https://global.gotomeeting.com/meeting/join/672431381>

Meeting ID: 672-431-381



AGENDA

1. **Welcome and Introductions** – 5 minutes

2. **Meeting Purpose** –Richard Meyerhoff - 10 minutes

3. **Agricultural Zone Map Draft Report – Work to Date –**
 - a) **Project Work Completed to Date** – John Dickey - 35 minutes
 - b) **Recap of Comments Received to Date** – Richard Meyerhoff – 5 minutes
 - [Ag Zone Map Workplan](#)
 - [Task 5.1 & 5.2 – Develop Map Layers and Identify Crop Sensitivity Zones](#)
 - [Comment/Response Table 5.1 & 5.2](#)

4. **Alternatives for Moving Forward – Where Should We Go?** - Interactive Presentation and Discussion – Richard Meyerhoff– 60 minutes
 - a) **Areas of Consensus**
 - b) **Potential Uses of Mapping to Support Application of Draft AGR Policies (from October 17 Executive Committee Meeting)**

5. **Stakeholder Direction – Consideration of Revisions to Agricultural Zone Map Workplan/Scope of Work:** – Richard Meyerhoff and Tim Moore– 30 minutes

CV-SALTS Geographic Information Systems Basin Planning Technical Services

Task 5 Scope of Work

The following is a detailed description of the scope of work and corresponding budget of Task 5 of the Geographic Information System (GIS) Technical Services that will be completed over the next seven (7) months in conjunction with CV-SALTS. This scope of work addresses Task 5 of the GIS Technical Services, as requested in the CV-SALTS Request for Qualification (RFQ). The LWA Team responded to the RFQ on May 30, 2012 and was authorized to provide additional GIS Technical Services on August 6, 2012 for Tasks 1 through 4 included in the RFQ¹. This scope of work was prepared by the LWA Team pursuant to the approval of the Task 5 Work Plan by the Executive Committee on January 11, 2013. Any changes to the scope of work will require Executive Committee approval and adjustments to the project budget. The scope of work will be initiated after a notice to proceed has been received from the CV-SALTS Executive Director and/or Technical Program Manager. The elements that are included in the approved Task 5 Work Plan are outlined below in this scope of work and discussed with details in the following sections.

BACKGROUND

This section describes the status of ongoing CV-SALTS deliberations on technical and policy questions related to this scope, and the technical approach taken in this scope.

Status of CV-SALTS Deliberations on AGR Thresholds

At the time of the development of this scope of work, the policy and technical discussions related to protection of AGR beneficial uses is ongoing (Quinn and Klassen, 2011; Dickey, 2011), partly in response to questions in the literature about the accuracy and potential conservatism of simplistic quantitative approaches (Letey et al., 2011; vanGenuchten and Gupta, 1993). At the time of the preparation of this scope, it is therefore premature describe a tool set that, when applied, will provide analyses required by an unknown future policy. Fortunately, CV-SALTS is undertaking technical and policy deliberations to answer some of the outstanding questions regarding appropriate selection and use of quantitative tools to develop thresholds that will be useful as part of AGR definitions. The approach in this scope is to proceed with data gathering and initial zoning work that is least dependent on the outcome of this concurrent process, and that provides foundational data and preliminary results that will be necessary, regardless of the specific outcome of the deliberative process.

Further, a final step in which these tools are applied is described in this scope of work, assuming a specific outcome. ***This step (Subtask 5.3) and related scope will need to be re-examined once the deliberative process is completed, unless it is resolved that the process described in the scope is appropriate.***

Technical Approach Taken in this Scope

Existing models relate crop, climate, soils, management, and irrigation water quality in a quantitative way. Crop, soil, and to a lesser extent ambient water quality data are available for most irrigated zones. Were the means to apply these models over irrigated areas of Region 5 available, they could inform the process of protecting AGR beneficial uses. Exactly how this information will be employed depends heavily on the outcome of ongoing policy discussions.

¹ The detailed Work Plan for Tasks 1, 3, and 4 of the GIS Services was submitted to CV-SALTS in August and approved by the CV-SALTS Executive Committee on September 10, 2012.

The purpose of Task 5 is to develop a GIS-based Crop Sensitivity (to salinity) Tool Set (CST). That is, spatial data (cropping patterns, climate, soils, and management) will be analyzed to identify the most sensitive crops grown, and the irrigation water quality required to produce that crop. Available water supply quality can be compared to what crops require. The intention is that these tools would help to establish a technical (not policy) linkage between agricultural water quality needs on one hand, and actual water quality on the other, identifying areas where use and quality would be most likely to conflict.

It is recognized that conditions (such as cropping patterns) and data sets to characterize those conditions (e.g., GIS layers) are evolving. To be useful, tools will need to be modular so that data or assumptions could be updated and new results generated with minimum effort. To allow the work to progress, readily available data sets will be employed to produce results that are as comprehensive in geographic scope as practicable. It will be important for collaborators, reviewers, and users to bear in mind that some analyses may be preliminary pending finalization of policy decisions, and to focus on the nature of the tools as the main concern within this scope. Definitive applications and results will need to await finalization of policy decisions and alignment with a final technical approach.

It is also possible that more in-depth analysis will be needed even to determine the technical relationships among these several factors and crop production. One way to evaluate the performance of the CST is to compare results to those of more detailed studies of specific areas. Three such comparisons are mentioned in this scope of work.

Throughout this document, work items that *will* happen are described as part of this scope of work, and items that *could* happen that are of interest and made possible by this work, are either omitted or their exclusion from this scope is explicit.

A schematic flow chart (**Figure 1**) illustrates the process that will be followed to develop an abbreviated Hoffman-type result for irrigated agricultural lands in the Central Valley. Also illustrated is the more rigorous and detailed, iterative analysis actually employed in Hoffman's method (Hoffman, 2010). Although technically feasible at the whole-valley scale, this detailed approach is recommended after an initial application of the abbreviated approach. This will allow CV-SALTS and stakeholders to identify areas where the detailed approach would be most helpful in making decisions. For example, where water quality is reliably adequate to irrigate the most sensitive major crops, a detailed analysis may not be necessary. **Figure 1** will be a useful reference to the reader attempting to understand exactly what work is being proposed, as well as relationships to outside data sources, among data generated, as well as how these data underpin specific results.

The following three tasks are a technical approach applying the principles described above, to achieve the stated purpose of Task 5:

- **Task 5.1 - Research and Develop Map Layers** – This is a large-scale data gathering effort for the Central Valley to generate the map layers that will form the basis for analysis under Tasks 5.2 and 5.3. An irrigation water quality data request will be generated and responses tabulated (see below the Subtask “Irrigation Supply Water Sources and Quality” for details). Although salinity is the main focus of analysis under these tasks, other water supply quality data (for other constituents) will be captured and available for later use. In addition, basic definitions (e.g., minor crops that can be ignored, tolerable levels of yield reduction, and what constitutes a dry year) will need to be procured or developed (see **Figure 1**). Crop sensitivity thresholds to soil water salinity, and irrigation and drainage district boundaries, as well as the study area boundaries for Hoffman (2010), Grattan and Isidoro (2006), and Montgomery et al. (2010) will

also be procured for later use. Agroclimatic data for the Central Valley, available in summary fashion by Detailed Analysis Units (DAUs) from DWR, along with more detailed climate records (primarily to ensure variability is properly accounted for) will be added to the database. Soils data from the NRCS will also be included. *Mapping and data products that will be produced include all the major factors (climate, soils, crop coverage, and water supply quality) that determine CSZs, throughout most irrigated areas of the Central Valley.*

- **Task 5.2 - Identify Crop Sensitivity Zones (CSZs)** – Task 5.2 will develop CSZs based on data from Task 5.1. The goal will be to segregate areas with markedly different applied (surface and ground) water quality, cropping patterns, climate, and/or soils. Irrigation and drainage district, Initial Analysis Zone (IAZ) boundaries (as part of the ICM project), and drainage basins (CVRWQCB Staff, 1991) will be used as preliminary guides. Study areas employed in Hoffman (2010), Grattan and Isidoro (2006), and Montgomery et al. (2010) will also be matched as closely as practicable. Up to 25 CSZs will be identified. Crop mixture summaries will be developed, and major crops identified within each CSZ. CSZs will be reviewed and refined with CV-SALTS. *Mapping and data products produced will include most sensitive crops, and their levels of sensitivity to soil salinity, throughout most irrigated areas of the Central Valley.*
- **Task 5.3 - Determine Applied Water Sensitivity Thresholds** – Task 5.3 will employ data from Task 5.1, along with the CSZs and major crop mixtures from Task 5.2. Crops will be screened based on soil water salinity thresholds to identify the most Sensitive Major Crop (SMC). Estimated dry-year agroclimatic and irrigation management parameters will be used to develop approximate soil irrigation water salinity relationships for the SMC in each CSZ. Based on these, tolerable maximum irrigation water salinity for each CSZ will be estimated. This abbreviated method will again be as similar to those employed in the Hoffmann (2010) study as practicable, but is primarily streamlined by employing previously summarized agroclimatic data from DWR, and less iteration in selection of the SMC and maximum irrigation water salinity.

Detailed analyses have been completed for three areas: Yolo County around Woodland (Grattan and Isidoro, 2006), the South Delta (Hoffman, 2010), and along the Lower San Joaquin River (Montgomery, 2010). The results of one of these studies will be compared to results of analyses in this and the preceding task as first orders of business, before work on other areas proceeds. The LWA Team will consult with CV-SALTS regarding the study area to be used for comparison before the analysis. In addition, where (surface and/or ground) water supply salinity data are available, they will be compared to sensitivity thresholds for the same areas. Areas where water supply salinity exceeds sensitivity thresholds may warrant future investigation with regard to actual influence of salinity on crop production. Existing AGR beneficial use designations will also be compared with CSZ results. *Mapping and data products that will be produced throughout most irrigated areas of the Central Valley include a) a map of CSZ applied water crop sensitivity thresholds, and comparisons of these with b) available applied water quality, as well as with c) existing AGR beneficial use designations.*

PHASED APPROACH

The LWA Team proposes a two phased approach for Task 5 for the development of the CST for irrigated areas in the Central Valley. The overall effort is proposed to delineate up to 25 crop sensitivity zones (CSZs) within the Central Valley.

- Phase 1 effort will entirely complete Task 5.1 data gathering, and Task 5.2 Crop Sensitivity Zones (CSZs) delineations. This initial phase of work will also include the determination of crop sensitivity thresholds for one CSZ, and comparison to results of an existing, detailed study. Several alternative detailed studies exist, for Yolo County, the South Delta, and the Lower San Joaquin River areas. The work will be done over four months.

- Phase 1 will include consultation with CV-SALTS regarding the appropriate methodology to be used for Phase 2. The methodology that has been scoped here (application of the Hoffman Model) is one possible approach. However, given the sensitivity of results to the quantitative tools and assumptions, it will be important to ensure that Phase 2 work is aligned with CV-SALTS technical and policy choices.
- Phase 2 effort will be the continuation of threshold determinations for up to 24 CSZs. The work will be completed over a two-month period. This Phase of work will be further discussed in CV-SALTS committee meetings in the course of completing Phase 1; hence, it is not part of this authorization. The schedule in **Attachment A** has a tentatively start date for Phase 2 on 28 June 2013 (pending approval of the Phase 2 budget by the Executive Committee).

The budget breakdown for Phase 1 and Phase 2 efforts is presented in **Table 1**. The detailed schedule for the two phases is shown in **Attachment A**.

Following is a detailed description of the Task 5 approach, work to be completed, schedule (**Attachment A**) and corresponding budget (**Table 1**).

TASK 5.1 RESEARCH AND DEVELOP MAP LAYERS

The objective of Task 5.1 is to develop GIS map layers for irrigated agricultural areas of the Central Valley as a foundation for the identification of CSZs (Task 5.2), and for calculation of crop sensitivity thresholds (Task 5.3). Recent land cover mapping from DWR, and from derivations and syntheses of DWR data (in WARMF and CVHM, for example) will serve as the default for this work. The most recent, readily available land cover data will be employed, and the CST will allow for update of these data as more recent data become available.

When the multiple data sets from different sources are consolidated in the same GIS layer, the accuracy of the data sets will be assessed. Compiled data from the different sources will be cross checked in the geodatabase for discrepancies through cascading queries and data record filters to identify duplicate, missing, or conflicting data. Without trying to perfect these data, major problems that could affect this tool development task will be identified and addressed.

A Technical Memorandum (TM) 5.1 will summarize the dataset, sources, and issues and limitations that are identified in the data sets. It should be noted that data gaps and/or out-of-date data are likely to be a common occurrence given the 13 million acres that are included in the study area. These will be noted in TM 5.1.

Data sets listed in the Data Source Matrix table (provided as Attachment C in the Task 5 Work Plan) cover most of the Central Valley. In addition, as noted below, GIS layers developed under Tasks 3 and 4 of the GIS project will be incorporated into Task 5 to provide the Central Valley data coverage. Task 4 GIS layers with water quality data will feed into GIS layers for Subtasks 5.1.3.

Tasks 5.1.1 through 5.1.8 will be performed to create the GIS data layers from the identified data sources. While Task 5 will start after GIS Tasks 3 and 4, the Task 5.1 schedule is aggressive to expedite the work and provide better alignment with the Task 3 and 4 schedules (**Attachment A**).

Subtask 5.1.1: Political or Other Boundaries and Base Map Information, and Preliminary Policy Recommendations

The LWA Team will build off of the Task 3 baseline map layers (updated from the Phase 1 BUOS GIS) and add boundaries that are geographically pertinent to the delineation of CSZs (see **Figure 1**). These boundaries will include the following:

- Political boundaries (counties, cities);
- Other jurisdictional boundaries such as irrigation districts, drainage districts, and water districts, and Regional Board boundaries;
- Initial Analysis Zone (IAZ) boundaries;

In addition to these geographic data, **Figure 1** shows how certain policy recommendations will be required from CV-SALTS, or will need to be anticipated by the LWA Team, to complete this work, including:

- Definition of a minor crop, or one that is sufficiently rare to be ignored in assessing the sensitivity of crops in a CSZ.
- Definition of a tolerable level of yield reduction, so that the productivity level of sensitive crops that should be employed in the analysis can be known.
- Definition of a dry year, for the purposes of selecting the climatic conditions under which the root zone salinity levels should be estimated.

With respect to the use of estimated dry-year agro-climatic data, yield reductions in sensitive crops due to salinity will be felt most acutely during dry years (i.e., when crop evapotranspiration (ET) is greater than precipitation). This is true for two reasons. First, there is less precipitation to help leach salt downward and through the root zone. Second, the climatic (temperature, ET) stress on the crop may be greater, so that osmotic stresses imposed by salinity can become more harmful. It should be noted that, should these definitions evolve, or be set at site-specific levels, the CST could be employed to update results to reflect new definitions.

Subtask 5.1.2: General (Statsgo2) and Order 2 (SSURGO) Soil Mapping

Soils database for the Central Valley will be acquired from the Natural Resources Conservation Services (NRCS) Soil Data Mart - Statsgo2 (U.S. General Soil Map). Soils data are available publicly and they can best be analyzed in ArcGIS with the NRCS' extension – the SSURGO the Soil Survey Geographic Database online viewer. Additional soil data are available from United States Forest and Park Service databases, but is generally less critical since little of this area is irrigated cropland. Information collected in the geodatabase will include soil classification, as well as physical and chemical properties, drainage conditions, and productive capacity.

Subtasks 5.1.3 and 5.1.4: Irrigation Supply Water Sources and Quality

As shown on **Figure 1**, irrigation water quality will be examined when developing CSZs, and will be compared to results for CSZs. The original Subtask 5.1.4 of the RFP (Average Groundwater Quality Available for Agriculture) will be covered under this Subtask.

Where available, irrigation supply water quality data will be compiled from irrigation and groundwater management districts for service areas. Other sources of available data include data sources that are currently being compiled in the ICM and GIS projects, including WARMF and CVHM databases, UC Davis SBX2 databases, the SWRCB GAMA Program, California Department of Public Health (CDPH), USGS, DWR, and Department of Pesticide Regulation (DPR). Ambient groundwater quality data (for

agricultural wells), to the extent that they are available, are already being developed by the LWA Team under GIS Subtasks 4.5 and 4.8.

Water quality data gathering will focus on total dissolved solids (TDS) and electrical conductivity (EC) since the Task 5 focuses on salinity effects on irrigated agriculture. However, where available, concentrations of specific ions affecting agriculture (e.g., boron, sodium, calcium, magnesium, nitrate, chloride) will also be incorporated into the database. For some sources, water quality data are already organized in databases by CDPH, DPR, etc.

While the data from the current GIS project (Subtasks 4.5 and 4.8) will be used to supplement Task 5 effort, representative irrigation water quality data is currently lacking for many geographies. Yet it is critical to know the quality of applied water for many purposes, including the proposed comparisons to thresholds generated during Phase 2 of this work. Therefore, a focused data request will be generated to facilitate compilation of readily available irrigation water quality data from stakeholders. The data request will be prepared at the beginning of Task 5 and will request at least three data items: 1) TDS of applied surface water, 2) TDS of applied groundwater, and 3) the proportion of applied water supplied from groundwater. The LWA Team will compile data provided by June 2013 in the requested format to perform the comparison analysis.

Subtask 5.1.5: Agriculture Beneficial Use Listings

This data layer will be completed under Task 3 of the GIS Technical Services. Under Task 3, beneficial uses and water quality objectives for the existing waters, including AGR, will be linked to the updated NHD 2012 dataset. This data layer will be compared with results for CSZs in Task 5.3.

Subtask 5.1.6: Current Crops Grown

Cropping pattern data also form part of the basis development of the CSZs (see **Figure 1**). WARMF input data include data from DWR, the Dairy General Permit, and USGS on land cover for the WARMF areas. However, additional geographic coverage will be needed for areas without WARMF coverage. CVHM crop classes will be investigated, since they too are based on DWR data. However, CVHM crop classes are based on predominant crops on each CVHM model grid area (as mapped by DWR), and may ignore sensitive crops that do not dominate areas within the size of these grids. Current and historic crop pattern data directly from DWR (to individual field level of resolution) may therefore be a better source for these areas. This mapping is only at intervals of seven or more years. Nevertheless, the most recent and readily available land cover data will be adequate for CST development, and can be refined for later analyses in areas where this appears necessary.

Land cover in some areas of the Central Valley (e.g., surrounding Modesto) has evolved greatly, for example through the planting of microspray-irrigated permanent crops (e.g. almonds). These shifts, though they may be quite significant to future salt and nutrient transport from root zones (and thus cropping system sensitivity), are not fully reflected in DWR land cover mapping that is sometimes years old. Based on discussions with a vendor of updated data, we anticipate that they will provide mapping and summary tables illustrative of these shifts free of charge. These will be incorporated into TM 5.1 to shed light on this issue so that it can be properly understood for future refined analyses in areas, where justified.

Subtask 5.1.7: Current and Historic Value of the Crops Grown

The CV-SALTS Executive Committee policy discussion around the use of crop value in the AGR beneficial use determinations remains dynamic. We recommend no effort on this topic at this time. If this becomes a greater focus at a later date, crop value data from the USDA, California Department of Food and Agriculture (CDFA), or Ag Commissioners can be compiled later.

Subtask 5.1.8: Other Constraints Limiting Growth of Crops

Climate data are available from the California Irrigation Management Information System (CIMIS) and National Climatic Data Center (NCDC), and have been summarized for several years for DAUs by DWR, including monthly evapotranspiration (ET_o), precipitation, as well as applied water, and ET of applied water (for 21 crop classes, including the relatively sensitive alfalfa, dry beans, almonds, and rice) for the years 1998 through 2001. CIMIS data records will be employed to statistically characterize average and dry water years. **Figure 1** shows how crop ET and precipitation during the growing season for a dry year (which can be calculated from these data) can be employed in later subtasks to support a Hoffman-like screening analysis.

The impact of salinity on crops in terms of yield reduction is summarized in many studies (e.g., Maas and Grattan, 1999; Hoffman 2010). The recent CV-SALTS white paper “Salinity Effects on Crop Yields” (CDM Smith Memorandum, 30 July 2012) summarized the current state of knowledge regarding the effects of elevated salinity on crop yields with specific attention to seasonal tolerances. Crop sensitivity data will be compiled from these sources and the US Salinity Laboratory. **Figure 1** shows how these will feed into screening CSZ data to identify the most sensitive crops, and then employed to set thresholds for maximum root zone salinity.

Deliverables:

- *One set of “Foundation” GIS shape files associated with Subtasks 5.1.1 and 5.1.8 layers with geodatabase and metadata*
- *Presentation of Draft Maps for Crop Sensitivity Tool*
- *One (1) Draft Technical Memorandum 5.1 summarizing GIS data layers 5.1.1 to 5.1.8, including data sources, data structure, QA/QC process, data gaps and limitations. The Draft TM will be submitted electronically both in Microsoft Word and Adobe Acrobat (PDF) format.*
- *One (1) Final Technical Memorandum 5.1 summarizing GIS data layers 5.1.1 to 5.1.8. The Final TM will be submitted electronically both in Microsoft Word and Adobe Acrobat (PDF) format. The Final TM will be submitted after responding to comments by the Project Committee and TAC as directed by the TPM. The LWA Team will work with the TPM to provide a tracking table for responses to general and specific comments and submit the table with the Final TM. The LWA Team will respond to one (1) set of comments compiled by the TPM.*

TASK 5.2 IDENTIFY CROP SENSITIVITY ZONES

The purpose of Task 5.2 is to develop up to 25 CSZs for irrigated agricultural portions of the Central Valley that, to the extent practicable, subdivide areas with distinctly different cropping patterns, climatic conditions, and water supply. Given the expanse and great diversity encompassed by this region, some of the CSZs may still be relatively diverse, but for an initial, screening-level, Hoffman-like analysis, this number of units should provide a sufficient foundation. This initial, comprehensive analysis will provide a basis for selecting areas that warrant more thorough, detailed analysis.

After CSZs are developed, their cropping patterns, range of likely irrigation water qualities, and leaching fractions (LFs) will be estimated. **Figure 1** shows how these parameters will either be employed in developing irrigation water salinity thresholds, or will be compared to those thresholds.

Subtask 5.2.1: Define CSZs Based on Irrigation Water Quality and Cropping Patterns

The Draft CSZs and corresponding threshold development will be driven by four major factors:

1. Cropping patterns - where crops are grown (which is an indication of what can or will be grown);
2. Irrigation water management and water quality of surface and ground waters, including where water quality is impaired relative to existing crop tolerances;
3. Soils; and
4. Climatic conditions.

GIS data layers of these four major factors (much of it compiled in Subtask 5.1) will be “stacked” in the ESRI™ ArcMap® Spatial Analyst® to identify apparent similarities in spatial trends and to select the most useful CSZ delineations.

Cropping Patterns - Salt tolerance of crops will be mapped based on data compiled in Task 5.1. The density of sensitive crops in areas will be quantified and mapped, along with the density of specific, sensitive crops. The results of these analyses will be referenced when developing CSZs, and to the extent practicable, CSZs will encompass areas in which these frequencies are relatively consistent.

Source and Water Quality of Irrigation Water - The reasons for employing irrigation source water quality in developing CSZs are the following:

1. Within localized areas with similar water supply, the frequency of sensitive crops can also be similar.
2. Results of this analysis will be of interest to groups who provide or manage water supplies. To the extent that CSZs conform to some of their boundaries, this will make results more meaningful.
3. In Task 5.3, resulting maximum tolerable irrigation water salinity will be compared to actual irrigation water salinity (where these data are available), to provide a sense of where there is potential for sensitive crops to be affected by irrigation water salinity. Again, this comparison will be easier and perhaps more useful if boundaries align generally with recognized water supply boundaries.
4. In Task 5.3, resulting maximum tolerable irrigation water salinity will be compared to results in Hoffman (2010), Montgomery et al. (2010), and Grattan and Isidoro (2006). This comparison will be easier and perhaps more useful if boundaries align generally with boundaries of these studies.

Actual irrigation water quality can be employed where available (see above the Subtask “Irrigation Supply Water Sources and Quality”). Polygons representing districts supplying or managing water, and IAZs, will be helpful as proxies for water quality where there is reason to believe irrigators within an area have access to similar water quality.

Soils - Soils data will also be reviewed when delineating CSZs, with an emphasis on soil texture, drainage class, depth to groundwater, and water holding capacity, properties that most strongly influence soil-plant-water relationships. A similar approach was taken by Hoffman (2010) for mapping soil data in the South Delta area. Locations of saline and sodic soils will be considered.

Climate Conditions - Climate factors (average monthly ET and an estimate of effective precipitation) for DAUs will be used to characterize climate, and referred to in delineating CSZs.

Subtask 5.2.2: Summaries and Presentation of CSZ Properties

Summary tables and maps illustrating the distribution of the major factors (sensitive crops, irrigation water quality and sources, soils, and climate) among the CSZs will be developed, so that the characteristics of these areas can be reviewed and understood.

The LWA Team will present CSZ delineations and summaries of properties to CV-SALTS and allow for comments and refinements (see **Table 1** or **Attachment A** schedule for Subtask 5.2.2) before commencing Task 5.3. The presentation will be documented in PowerPoint slides made available for comments.

The finalized CSZ delineations and summaries of their properties will be included in TM 5.2.

Deliverables for Phase 1 effort only:

- *GIS layer of draft CSZs*
- *Presentation of draft CSZs along with summary maps and tables illustrating their properties*
- *One (1) Draft Technical Memorandum 5.2 identifying CSZs selection criteria and limitations*
- *Note: Response to comments and CSZ finalization will be documented in TM 5.2.*

Note on Phase 1: The Final TM and GIS layers for the CSZ delineation will be part of Phase 2 deliverables. This will allow for coordination on final CSZ maps and the remaining water sensitivity threshold calculations (Task 5.3) to be performed during Phase 2.

TASK 5.3 DETERMINE APPLIED WATER SENSITIVITY THRESHOLDS

The objective of Task 5.3 is to develop the maximum irrigation water salinity concentration tolerable by the SMC in each CSZ. The planned steps to determine this value are illustrated in **Figure 1**. They parallel the approach taken by Hoffman (2010). However, monthly climatic data for each CSZ (see Subtask 5.1.8), and an estimate of the ratio of soil to irrigation water salinity are employed, each providing some simplification that will facilitate completion of the work for a large geographic area on a restricted budget and schedule, while retaining the main inputs and logic of Hoffman (2010).

These steps for each CSZ (please refer to **Figure 1** for logical relationships) include the following:

- Procure working definitions of the following, supplied by CV-SALTS, or created as interim placeholders while awaiting later decisions on definitions, of the following:
 - Minor crops that can be ignored when selecting SMCs
 - The tolerable level of yield reduction for the SMC
 - A dry year during which the tolerable level of yield reduction would occur
 - Select SMCs based on crop patterns and soil water salinity thresholds for each CSZ
- Determine the maximum soil salinity level (EC_{sw}) that is tolerated by the SMC without intolerable yield reduction
- Estimate the ratio between soil and irrigation water salinity that occurs during a dry year
- Estimate the dry-year maximum tolerable irrigation water salinity (MTIS)

The MTIS will be spatially compared to the following (see **Figure 1**):

1. Findings of detailed studies of areas in the South Delta (Hoffman, 2010), Yolo County around

Woodland and Davis (Grattan and Isidoro, 2006), and along the Lower San Joaquin River (Montgomery et al., 2010). The value of this comparison is to evaluate whether the CST is providing results that are generally consistent with more detailed work, and if not, to begin to understand why.

2. Actual irrigation water salinity, where this is known. Where irrigation water is sufficiently dilute to avoid unacceptable yield reductions in SMC yield, further evaluation may be less pressing.
3. Existing beneficial use salinity criteria. It will be interesting to see how these criteria align with CST results for the Central Valley region.

The results of these comparisons will be summarized in draft and final versions of TM 5.3. Included will be map and tabular summaries of SMCs, of ratios between soil and irrigation water salinity, of MTIS, and of the three listed comparisons of other data sets with MTIS.

Deliverables for Phase 1 Effort only:

- *GIS layers and other calculations (databases, workbooks) associated with analysis inputs and outputs for one of the three CSZs (Yolo County, the Lower San Joaquin River, and South Delta areas).*
- *One (1) Draft Technical Memorandum 5.3 for methods of applied water sensitivity threshold development*
- *One (1) Final Technical Memorandum 5.3 for methods of applied water sensitivity threshold development.*

REFERENCES

Central Valley Regional Water Quality Control Board (CVRWQCB) Staff. 1991. Inland Surface Waters Plan (sections pertaining to delineation of drainage basins).

Dickey, J. 2012. Potential influence of crop sensitivity and leaching tools and assumptions on target salinity levels. Memo to CV SALTS Coalition, dated December 6, 2012.

Grattan, S.R. and D. Isidoro-Ramirez. 2006. An Approach to Develop Site-Specific Criteria for Electrical Conductivity, Boron and Fluoride to Protect Agricultural Beneficial Uses.

Hoffman, G.J. 2005. Salt Tolerance of Crops in the Southern Sacramento-San Joaquin Delta. A report for the California Environmental Protection Agency, the State Water Resources Control Board, and the Division of Water Rights.

Letey, J., G.J. Hoffman, J.W. Hopmans, S.R. Grattan, D. Suarez, D.L. Corwin, J.D. Oster, L. Wu, C. Amrhein. 2011. Evaluation of soil salinity leaching requirement guidelines. *Agricultural Water Management*, 98:502-506.

Maas, E.V., and S.R. Grattan. 1999. Crop yields as affected by salinity. In R.W. Skaggs and J. van Shilfhaarde, eds., *Agricultural Drainage*. Agron. Monograph 38. ASA, CSSA, SSSA, Madison, WI.

Montgomery, A., F. Kizito, J. Simi, C. Cheng. June, 2010. Salt Tolerance of Crops in the Lower San Joaquin River (Merced to Stanislaus River reaches) – Draft. Central Valley Regional Water Quality Control Board.

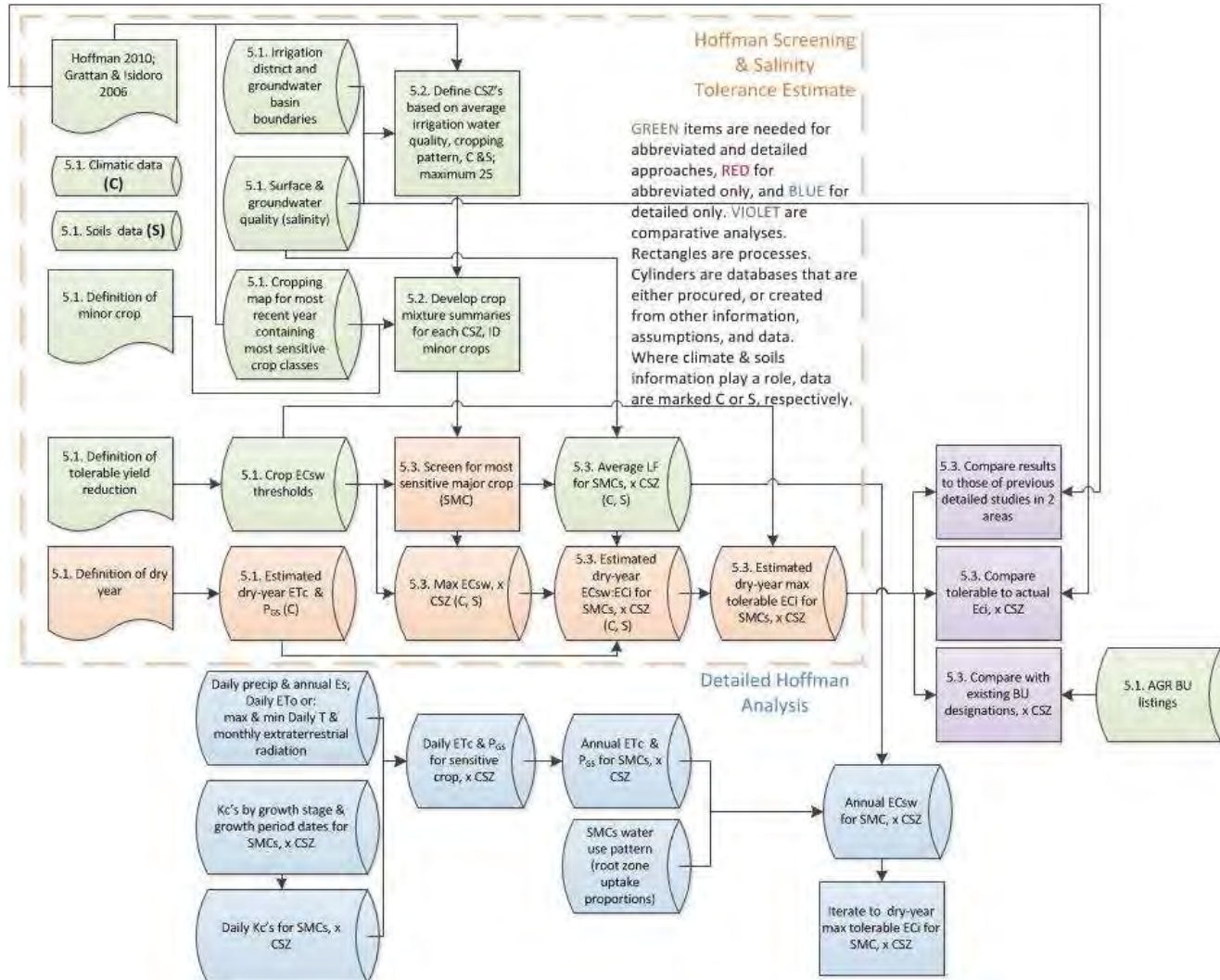
Quinn, N. and P. Klassen. 2011. Central Valley Salinity Alternatives for Long-Term Sustainability (CV-SALTS) Technical Advisory Committee Recommendations Regarding City of Davis Salinity Study Draft Workplan. Letter to Diana Messina, NPDES Program Manager at the CVRWQCB, dated October 4, 2011.

VanGenuchten, M. Th., S.K. Gupta. 1993. A Reassessment of the Crop Tolerance Response Function. *Journal of the Indian Society of Soil Science*, 41:730-737.

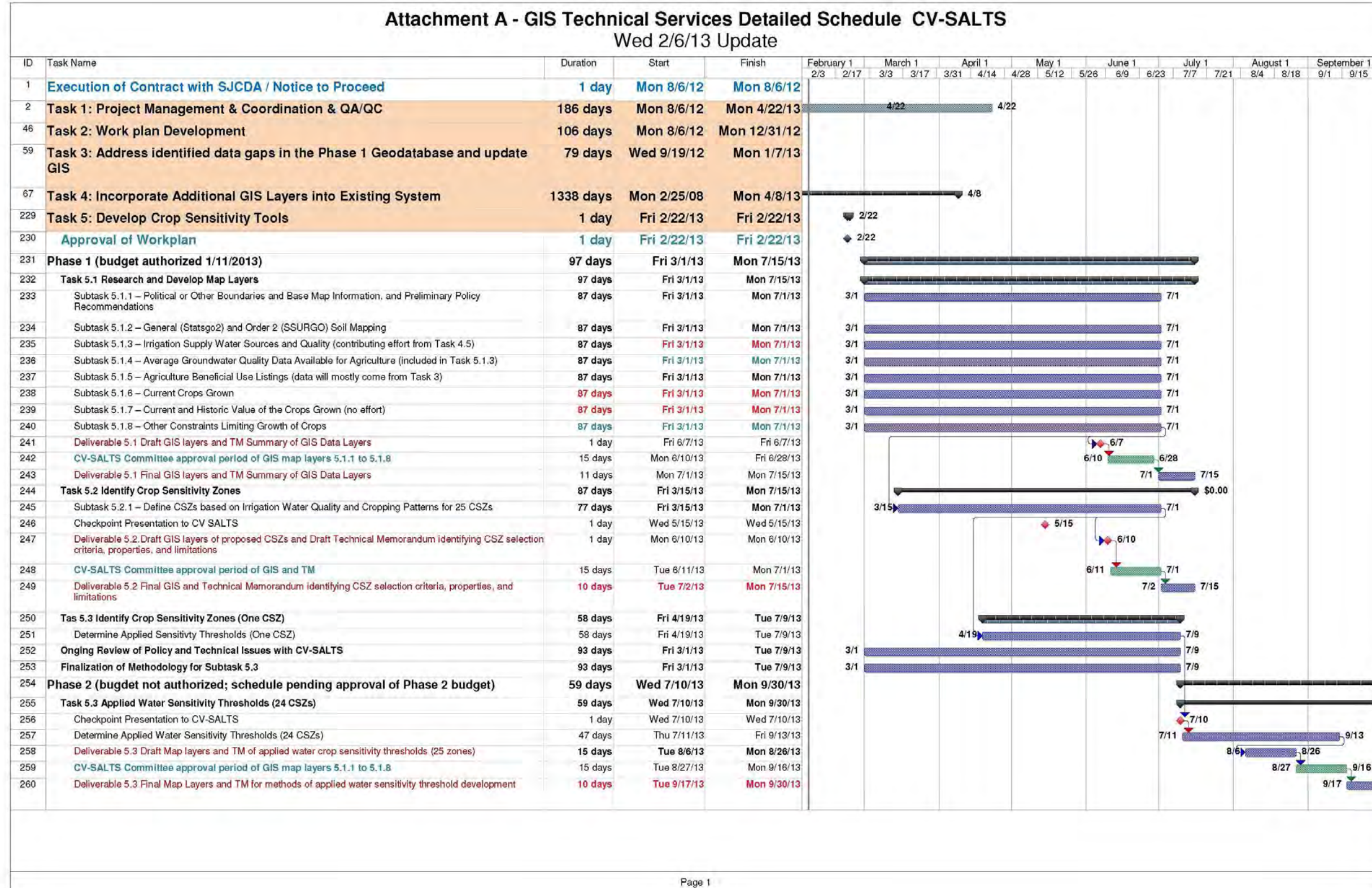
Table 1 Task 5 Deliverables Schedule and Budget Summary

Phase 1 tasks authorized on 1/11/2013	Start	Finish	Budget	Comment	Phase
5.1 Data Research and GIS setup for CSZ delineations	1 March	1 July	\$32,046	Data compilation for all layers. One-time budget authorization.	1
5.2.1 Define CSZs based in water quality and crop patterns for 25 CSZs for CV-SALTS checkpoint review	15 March	1 July	\$27,360		1
5.3 Determine Applied Water Sensitivity Thresholds for one (1) CSZ	19 April	15 July	\$5,677	Develop and compare results for one CSZ to results of a detailed study (to check against accepted results)	1
5.2.2 Checkpoint presentation to CV-SALTS	15 May		\$15,580	This will be a MS PowerPoint and On-line web demonstration of CSZ mapping. Modifications will be made to CSZs based on input received.	1
Deliverables: <ul style="list-style-type: none"> Draft & Final Geodatabase and TM for Task 5.1. Draft only TMs and geodatabase for Tasks 5.2 & 5.3. 	15 July		\$40,395	Final maps and TM for Task 5.1 will be completed under this Phase 1 effort. Only the draft maps and TM for CSZ delineation are part of Phase 1 effort. The Final TM and GIS layers for Task 5.2 are intended to be part of Phase 2 deliverables. This will allow for coordination on final CSZ maps and the remaining water sensitivity threshold calculations (Task 5.3) to be performed in the Phase 2 efforts.	1
Requested Budget for Phase 1			\$121,060	Budget includes LWA team project coordination	1
Phase II tasks to be authorized. Schedule shown assumes timely deliberations and authorization. Budget & task definitions assume no change to proposed scope. If either of these assumptions prove to be untrue, then schedule and/or scope (including associated budget) may need to be revised. This work is shown as part of the Phase 1 effort, but are not budgeted.					1
5.3 Determine Applied Water Sensitivity Thresholds for 24 CSZs	10 July	13 Sept	\$65,292	Continuation of threshold determinations – 24 zones	2
5.2.2 & 5.3 Deliverables: Final Geodatabase, technical memo, and final presentation to CV-SALTS	6 August	30 Sept	\$46,842	Time table includes final approval of CSZs by CV-SALTS	2
As-needed A/QC			\$6,800		2
Requested Budget for Phase 2			\$118,935	Budget includes LWA team project coordination	2

Figure 1 Schematic of Task 5 Work Approach for Developing Crop Sensitivity Tool^a



^aIn developing a process diagram, items were placed in the most logical locations practicable, and redundancy was avoided. This creates some difficulty when aligning the diagram with the scope. For example, data and policy decisions compiled under Subtask 5.1 (and so numbered) are employed for the accomplishment of later subtasks. Nevertheless, they are numbered here for the Subtask in which they are first dealt with (i.e., 5.1). If the data are employed in later analysis steps, the arrows in the flow chart so indicate. The same holds for CSZs developed under 5.2, which are also employed in subsequent tasks.



Note that timing of approval for Phase 2 will determine the actual schedule, and changes to methodology may require revision to the Phase 2 scope and budget.

AUGUST 2013

CENTRAL VALLEY SALINITY ALTERNATIVES FOR
LONG TERM SUSTAINABILITY (CV-SALTS)

Geographic Information System (GIS) Technical Services

Task 5.1 and 5.2 – Develop Map Layers and Identify Crop Sensitivity Zones [DRAFT] Report

Prepared for

SAN JOAQUIN VALLEY DRAINAGE AUTHORITY

Submitted by

LARRY WALKER ASSOCIATES, INC

In association with

LUHDORFF AND SCALMANINI CONSULTING ENGINEERS

KENNEDY/JENKS CONSULTANTS

PLANTIERRA

SYSTECH WATER RESOURCES

CAROLLO ENGINEERS



Table of Contents

Table of Contents	i
List of Tables	ii
List of Figures.....	ii
Attachments.....	iv
Executive Summary	1
1. Introduction.....	4
1.1 Description of GIS Task 5 – Develop Map Layers and Identify Crop Sensitivity Zones	5
1.2 Report Organization.....	6
1.3 How the Task 5 Workplan was Implemented.....	7
2. Data Sources and Types	14
2.1 Data Sources	14
2.2 Task 5.1 Overview of GIS Data Layers.....	17
2.2.1 Subtask 5.1.1 – Political or Other Boundaries and Base Map Information.....	17
2.2.2 Subtask 5.1.2 – Soil Mapping	18
2.2.3 Subtasks 5.1.3 and 5.1.4 – Irrigation Supply Water Sources and Quality.....	18
2.2.4 Subtask 5.1.5 – Agriculture Beneficial Use Listings.....	20
2.2.5 Subtask 5.1.6 – Crops Grown	20
2.2.6 Subtask 5.1.7 – Current and Historic Value of Crops Grown	20
2.2.7 Subtask 5.1.8 – Other Factors Related to Salt Sensitivity	21
3. Crop Sensitivity Zone Delineation and Sensitive Crop Locations.....	24
3.1 Delineation of Crop Sensitivity Zones.....	24
3.1.1 Crop Sensitivity Zones and Drainage Basins.....	26
3.2 Sensitive Crop Locations	26
4. Other CSZ Properties Related to Crop Sensitivity.....	31
4.1 CSZ Properties Shown on Maps and in Summary Tables.....	31
4.1.1 Soil Data.....	31
4.1.2 Source and Quality of Applied Water.....	32
4.1.4 Climate Data	33
4.1.5 Management Factors.....	33
5. Conclusions and Recommendations.....	36
6. References.....	38

List of Tables

Table 1. Data Sources and Types.....	15
Table 2. Crops for which Coefficients Have not Been Measured	23
Table 3. Summary of Total Acreage of Crops by CSZs	28
Table 4. Crop Sensitivity Thresholds.....	30
Table 5. Summary of Soils Data for Electrical Conductivity, Sodium Adsorption Ratio, and Available Water Supply by CSZs.....	34
Table 6. Summary of Drainage by CSZs – Acreage Percentage	35

List of Figures

- Figure 1a. Schematic of Task 5.2 Analysis, as Presented in the Task 5 Workplan
- Figure 1b. Schematic of Hypothetical AGR Implementation
- Figure 2. Irrigation and Water District Boundaries
- Figure 3. Hydrologic Unit Boundaries with Drainage Basins and Initial Analysis Zones
- Figure 4a. Salinity thresholds for Common Bean, showing the relationship between or yield potential in the absence of other limiting factors (or relative crop yield), and soil salinity (or ECe). Relationships for many other plants take the same general form, but thresholds vary widely.
- Figure 4b. Relationship between ECe (depth weighted average soil salinity) and ECw (flow weighted average applied water salinity), showing how the function varies depending on management, which in this case is the leaching fraction of applied water (which is the water applied in excess of ET and runoff).
- Figure 4c. Approximate ECw target for a wide variety of plants, based on published ECe thresholds and an assumed 15% leaching fraction. These targets are for relative crop sensitivity ranking purposes only; actual targets should take more thorough account of other, site-specific factors (soil, climatic conditions, and management).
- Figure 5a. Schematic Example: Surface Water Recharge Areas with Co-Mingled Surface Drainage

Figure 5b. Schematic Example: Surface Water Recharge Areas with Isolated Surface Drainage

Figure 5c. Schematic Example: Groundwater Recharge Areas

Figure 6. Crop Sensitivity Zones (CSZs) and Drainage Basins

Figure 7. Crop Patterns based on DWR Land Use Survey

Figure 8a. Distribution of Major, Sensitive and Moderately Sensitive Crops

Figure 8b. Distribution of Minor, Sensitive and Moderately Sensitive Crops

Figure 9. Estimated Average Root Zone Salinity for 95% Maximum Crop Yield

Figure 10. Estimated Applied Water Salinity for 95% Maximum Crop Yield

Figure 11a. Illustration of Surface Recharge Network for SMCs in CSZ 202

Figure 11b. Illustration of Surface Recharge Network for SMCs in CSZ 582

Figure 12. Map of Soils Data for Electrical Conductivity (dS/cm) based on the NRCS-SSURGO

Figure 13. Map of Soils Data for Sodium Adsorption Ratio based on the NRCS-SSURGO

Figure 14. Map of Soils Data for Drainage Classes based on the NRCS-SSURGO

Figure 15. Map of Soils Data for Depth to Water Table (cm) based on the NRCS-SSURGO

Figure 16a. Map of Soils Data for Available Water Supply at 0-25 cm Soil Depth (cm) based on the NRCS-SSURGO

Figure 16b. Map of Soils Data – Available Water Supply at 0-100 cm Soil Depth (cm) based on the NRCS-SSURGO

Figure 17. Groundwater Total Dissolved Solids Data based on DWR, RWQCB WDR Dairy Data, and NWQMC Datasets

Figure 18. Irrigation Water Quality Data - Kings River Area

Figure 19. Applied Water Salinity in Total Dissolved Solids based on WARMF Dataset

Figure 20. Distribution of Applied Water Quality based on WARMF Dataset

Figure 20a. Difference between Applied Water Salinity (Figure 19) and Preliminary Estimate of Crop Requirement (Figure 10)

Figure 21. Average Evapotranspiration for Each Crop Sensitivity Zone

Figure 22. Average Effective Precipitation for Each Crop Sensitivity Zone

Figure 23. Average Applied Water for Each Crop Sensitivity Zone

Figure 24. Median Annual Effective Precipitation

Figure 25. Median Annual Reference ET

Figure 26. Median Annual Applied Water

Figure 27. Drought 5th Percentile Annual Effective Precipitation

Figure 28. Drought 95th Percentile Annual Reference ET

Figure 29. Drought 95th Percentile Annual Applied Water

Figure 30. Water Sources based on DWR Land Use Survey

Figure 31. Irrigation Type based on DWR Land Use Survey

Attachments

Attachment A Irrigation Data Request and Tabulation of Process and Responses through July 9, 2013

Attachment B Major Crop Designations for Each CSZ

Executive Summary

Previous to this Task 5.1-5.2 Report (Report), CV-SALTS' Executive Committee determined that narrative salinity objectives are appropriate to protect irrigated agricultural beneficial use (AGR). Protection criteria were also developed defining major crops to be protected, unacceptable levels of yield reduction due to salinity, and the driest years in which such protection need be afforded. A technical approach to regulating salinity sources to effect such protection was developed, along with the numerous data layers that were listed in the Task 5 Workplan (Workplan) previously submitted to CV-SALTS, and that are necessary or helpful to implement the suggested method. The Workplan envisioned that the work would be done in three main parts:

- Task 5.1 – Compilation of crop, soil, management, water district (or hydrographic), and climatic data;
- Task 5.2 – Delineation of crop sensitivity zones (CSZs); and,
- Task 5.3 – Determination of crop sensitivity (salinity concentration) targets.

Many other general technical approaches are possible, and may yet be considered outside of this report by CV-SALTS. For example, it could be assumed that, since crop yield reduction due to excessively saline water is generally rare, that protection of existing irrigation supply water quality is a sufficient guideline for some areas. While these approaches may have merit, they are not the subject of this Report.

The first two steps are the subject of this Report. In addition, extensive crop sensitivity data has been gathered and analyzed in a preliminary manner. This work and an a priori delineation of the CSZs were necessary to identify sensitive major crops (SMCs), which are defined based on their proportion of irrigated land in each CSZ. While not in direct conflict with the Workplan, this sequencing nuance had not been identified in the Workplan, but rather was discovered as the actual work proceeded. A flow chart was developed as part of the Workplan to facilitate understanding of the anticipated methodology. Many data themes were named, as were steps required to determine CSZs, SMCs, and crop sensitivity targets.

As part of this Report, a large introductory section was devoted to conceptual description and documentation of the methodology employed, and the strong functional connection to the intended end-use, and to the Workplan commitments. In that section, a new flow chart was developed to capture the additional knowledge and steps as they were executed, with the correspondence of each element to elements of the Workplan noted and discussed. This new flow chart shows how, in finalizing the work approach, end use of results was more carefully considered, resulting in a method that should be far more useful for the intended purpose of guiding protection of crops from excessive concentration of salinity in irrigation supply. The method is described in lesser detail in this Executive Summary, and in greater detail in the main body of the methods section (Sections 1 and 3). These three sections tell the same basic story in

three different ways, with the hope of accommodating the needs of readers with varying desire for and need of detail.

The preliminary determination of crop sensitivity levels was developed based on literature classifications and functions relating water quality to soil conditions and yield impacts. An estimate of irrigation water quality required to avoid unacceptable yield impacts to 96 crops was developed, and crop sensitivity classes were identified for an additional 86 crops. As part of the Workplan, a more thorough assessment of salinity targets, based on not only crop types, but also on soil and climatic conditions (for example, per Hoffman (2010) is planned as part of Task 5.3. However, Task 5.2 can only be done if the location of sensitive crops is already mapped. To protect irrigated crops as intended, areas recharging irrigation water supply to sensitive crops need to be known. Locating areas where sensitive crops are likely to be grown is a first step. Two options exist:

- Method 1 : Develop a theoretical map based on analysis of multiple factors influencing planting decisions (water availability and quality, soil and drainage conditions, climate, flood risk, infrastructure [irrigation, transportation, crop processing, and artificial drainage systems], pest pressure, market conditions, grower culture, and regulatory conditions).
- Method 2: A phenomenological map based on what farmers, who integrate these factors when making planting decisions, have chosen to do.

Method 2 has the disadvantage of being tied to the timeframe of the observation, after which some of the driving factors and the planting patterns that they determine may shift. However, it is very difficult to model farmer decisions (Method 1) with anywhere near the precision required to predict future planting decisions at the required level of detail, and in any case the development of such a model is beyond the scope of the current work. Therefore, Method 2 was employed, recognizing that observed patterns would likely shift somewhat over time, and that these potential shifts would need to be taken into account, perhaps by adjusting narrative AGR objectives in the future.

Locations of sensitive crops were mapped based on the most recent available irrigated crop mapping by the California Department of Water Resources (DWR). These maps showed many geographic concentrations of particular crops into groupings of fields. Recharge areas for these groupings of fields were observed to be relatively restricted in many cases, suggesting that protection of their water supply might naturally focus on fairly defined areas, some smaller than those envisioned in the Workplan (which estimated 25 CSZs in the whole Central Valley). It became evident that the relatively large CSZs would be most useful if primarily defined by hydrographic boundaries. This way, the main recharge areas for sensitive crop irrigation waters would be more likely to fall within the CSZ within which the crops occur. The preliminary CSZ boundaries used to identify SMCs, which followed hydrographic boundaries, were thus retained as final boundaries of 22 CSZs.

The same process applies to lands irrigated partly or predominantly with groundwater, although subsurface hydrographic network data are needed. No convenient Central Valley-wide data layer of subsurface flow networks exists, and subsurface hydrography was not mentioned in the Workplan. Subsurface hydrography is acknowledged and included as part of this methodology at a conceptual level. Where SMCs are primarily irrigated with groundwater, subsurface

hydrography will need to be investigated and folded into the analysis. However, this work is expected to be site-specific, sometimes quite intensive, and necessary for a subset of Central Valley irrigated lands.

Other data themes listed in the Workplan as potentially affecting CSZ boundaries would then be primarily employed for their other intended purposes:

- Crop data in conjunction with soil, climate, and management: These data were compiled in 5.1 (this Report) for use per Hoffman in Task 5.3 to develop refined crop sensitivity targets. The stage is thus set for Task 5.3, which cannot be performed without these inputs. The implied multivariate determination of CSZ boundaries (including several of these variables as inputs) was found to be inconsistent with the broader goal of a usable method to inform water quality criteria in narrative AGR objectives, and was thus not pursued. The reasons for this are those described in the preceding paragraphs.
- Irrigation and drainage districts, and drainage basins: The intended purpose of these data was to understand the routing of water to sensitive crops. Hydrographic data are more precise and appropriate in this regard. Nevertheless, these data were collected and mapped as part of Task 5.1 (this Report), per the Workplan, and are available for use. Drainage basin boundaries were compared to the CSZs.

1. Introduction

The objective of the Geographic Information System (GIS) Technical Services (GIS project) is to continue development of a GIS database for the Central Valley Salinity Alternatives for Long-Term Sustainability (CV-SALTS)¹. As a result of the GIS project, data and information pertaining to the beneficial uses, water quality objectives, and water quality of surface water and groundwater within the Central Valley² are being organized into a comprehensive database. A comprehensive database and GIS tools are central to the utilization of these data in analyzing water, land-use, and water quality information and for identifying areas of concern and assessing management alternatives.

The GIS project is being conducted in a collaborative setting with stakeholders and regulatory and partner agencies. One application of the data that has been gathered is to assist with the Initial Conceptual Model (ICM) work effort that, in turn, supports the development of a Central Valley Salt and Nitrate Management Plan (CV-SNMP) by May 2014. The knowledge base, technical analyses and associated documentation support development of amendments to the Water Quality Control Plans for the Sacramento River and San Joaquin River Basins and Tulare Lake Basin (i.e. Basin Plan Amendments or BPAs).

The *GIS Technical Services Workplan* (Workplan) describes the approach, milestones, and deliverables to be completed as part of the GIS project. The primary technical tasks include:

- Task 3 – Address Identified Data Gaps in Existing Beneficial Use Objectives Study (BUOS) System;
- Task 4 – Incorporate Additional GIS Map Layers into Existing System; and
- Task 5 – Develop Map Layers and Identify Crop Sensitivity Zones.

This Report covers part of the work planned under Task 5. Introductory sections (immediately below) describe the following:

- The elements of Task 5 that are addressed in this Report;
- The organization of the Report; and
- How the Task 5 Workplan was implemented.

¹ This project builds off of the Phase I Beneficial Use Objectives Study (BUOS) GIS data gathering effort that has already incorporated much data pertaining to water quality objectives and beneficial uses.

² The GIS project is being completed for the area within the jurisdictional boundary of the Central Valley Regional Water Quality Control Board (Region 5).

1.1 Description of GIS Task 5 – Develop Map Layers and Identify Crop Sensitivity Zones

The main purpose of Task 5 is to develop a Crop Sensitivity Tool Set (CST), which is intended to provide a method to analyze GIS layers to produce results that inform AGR (beneficial use of water for agricultural irrigation) designations and implementation. For this beneficial use, one of the main potential water quality impairments is elevated salinity. Less frequently, specific ions might also be considered impairments for this use. The focus of this work is to provide a robust manner in which to quantitatively relate the quality (salinity) of irrigation water to the potential for the water to cause reductions in crop yield. As such, the locations of sensitive crops, the sources of their irrigation water, and the quality of that water must be considered together. These elements are addressed in Tasks 5.1 and 5.2 (described below), and are the subject of this Report. The Workplan, the manner in which it was applied, and the processes and datasets developed, are elements of the CST. Additional elements will be developed under Task 5.3. A portion of the 5.3 work has been deferred, and only a pilot element will be performed under the currently authorized budget (Phase 1). The Task 5.3 work is not addressed in this Report, but this work provides helpful data and process for Task 5.3.

The Task 5 work effort includes three tasks that are briefly described below.

- Task 5.1: Research and Develop Map Layers

This task involves developing GIS data layers that form the basis for analysis under Tasks 5.2 and 5.3. Task 5.1 is a data gathering effort for the Central Valley and uses the readily available datasets to develop GIS layers and characterize conditions related to soils, climate, cropping patterns, drainage basins, irrigation and drainage districts, and applied water quality. As part of this effort, an irrigation water quality data request was generated and data received to date were also mapped. Maps and summary tables were produced, including available data on soils, crop coverage, crop sensitivity, climate, irrigation management, and applied water quality throughout most irrigated areas of the Central Valley.

- Task 5.2: Identify Crop Sensitivity Zones (CSZs)

This task involves delineating up to 25 CSZs. The delineation methodology (described later) was performed in such a way as to facilitate later development of protective AGR criteria, and the recharge zones in which they would be most critical. Crops were screened based on soil water salinity thresholds to identify Sensitive Major Crops (SMCs). The SMCs were identified and mapped. Summary tables of crop sensitivity thresholds were prepared. Data layers developed under Task 5.1 were mapped within the CSZs.

- Task 5.3: Determine Applied Water Sensitivity Thresholds (the subject of a forthcoming report)

This task uses the GIS data layers from Task 5.1 and the CSZs and the major crops identified from Task 5.2 to estimate tolerable maximum irrigation water salinity for areas that recharge water used to irrigate SMCs. During the currently authorized phase of this work (Phase 1), this will be performed for one pilot CSZ, probably in an area where a detailed study has already been performed (see below). Estimates of maximum tolerable

irrigation water salinity for other areas will await Phase 2 of Task 5 (not currently authorized). Three detailed studies exist, for Yolo County (Grattan and Isidoro, 2006), the South Delta (Hoffman, 2010), and the Lower San Joaquin River (Montgomery, 2010) areas. Among these three areas with detailed analysis, one area will be selected in consultation with CV-SALTS and the results of Task 5.3 will be compared with results previously obtained for that area. Upon authorization of Phase 2 of this work, the CST would be applied throughout other CSZs to estimate maximum tolerable irrigation water salinity levels in those areas.

Many other general technical approaches are possible, and may yet be considered outside of this report by CV-SALTS. For example, it could be assumed that, since crop yield reduction due to excessively saline water is generally rare, that protection of existing irrigation supply water quality is a sufficient guideline for some areas. While these approaches may have merit, they are not the subject of this report.

The purpose of this Report is to discuss the data collected, data sources used for developing the foundational GIS data layers (Task 5.1), the methodology used to delineate the CSZs, and the nature of the CSZs themselves (Task 5.2). As such, this Report, submitted by the LWA Team³, fulfills the requirement of the Task 5 Workplan⁴ for Tasks 5.1 and 5.2.

Again, the pilot application of the CST (Phase 1 portion of Task 5.3) will be documented in a separate report. As the work proceeds, the LWA Team will continue to consult with CV-SALTS regarding the appropriate methodology to be used for Phase 2 of Task 5. It will be important to ensure that Phase 2 work is aligned with CV-SALTS' technical and policy decisions.

1.2 Report Organization

This Report includes the following sections pertinent to GIS Tasks 5.1 and 5.2:

- Section 1 – Introduction
Provides a brief background on the GIS project and Task 5 objectives.
- Section 2 – Data Sources and Types
Provides an overview of data sources and types that were used in the development of the GIS data layers and the delineation of the CSZs.
- Section 3 – Crop Sensitivity Zone Delineation and Sensitivity Crop Locations
Describes the methodology used to delineate the CSZs and to identify the SMCs.
- Section 4 – Other CSZ Properties Related to Crop Sensitivity

³ The LWA Team consists of the following firms: Larry Walker Associates, Luhdorff and Scalmanini Consulting Engineers, Kennedy/Jenks Consultants, PlanTierra, Systech Water Resources, and Carollo Engineers.

⁴ The Task 5 Workplan for the development of the agricultural zoning map layers was submitted separately on February 7 2013 and authorized for Phase 1 of the effort.

Presents the GIS maps showing the spatial distribution of the soils, cropping patterns, climatic conditions, drainage basins, and applied water quality, along with summary tables of soils and cropping patterns, all across full set of CSZs.

- Section 5 – Conclusions and Recommendations

Describes progress to date, recommendations, and data limitations of the CSZs for estimating the applied water sensitivity thresholds.

1.3 How the Task 5 Workplan was Implemented

The CST is intended to contain and facilitate analysis of spatial data for cropping patterns, climate, soil, management, water delivery, and water drainage, to identify:

- Sensitive major crops grown;
- Locations of the crops and waters requiring protection; and,
- Irrigation water salinity that will not cause unacceptable yield reductions.

The CST will help to establish a technical (not policy) linkage between agricultural water quality needs on one hand, and actual water quality on the other, identifying areas where use and quality are most likely to conflict. Crop Sensitivity Zones, the main focus of this Report, need to be configured to facilitate foreseen application of the CST, as well as the use of criteria produced by the CST to inform the regulatory process.

This section contains a brief discussion of the following considerations that were key to deciding exactly how to implement the Workplan:

- How the Task 5 work is likely to be employed to inform AGR beneficial use criteria; and
- Implications of implementation considerations for CSZ delineation methodology.

This discussion is placed here, at the end of the Report's introduction, for the sake of clarity, since it is fundamental to the details of how the methodology in the Workplan was actually implemented. Additional methodological details are presented later in the Report.

The GIS Task 5 Workplan calls for analysis of spatial data (cropping patterns, soils, climate, and management) to delineate CSZs, and then to identify the most sensitive major crops grown in each CSZ and the irrigation water quality required to produce those crops. It also identifies drainage areas, as well as irrigation and water districts, as considerations in delineating CSZs. However, the exact manner in which all of these data would be combined to determine the boundaries of CSZs was not described, implying that the data themselves, and other considerations, might provide useful insights as to the best approach, and that this would occur during the actual execution of the work. In fact, this is how the work proceeded.

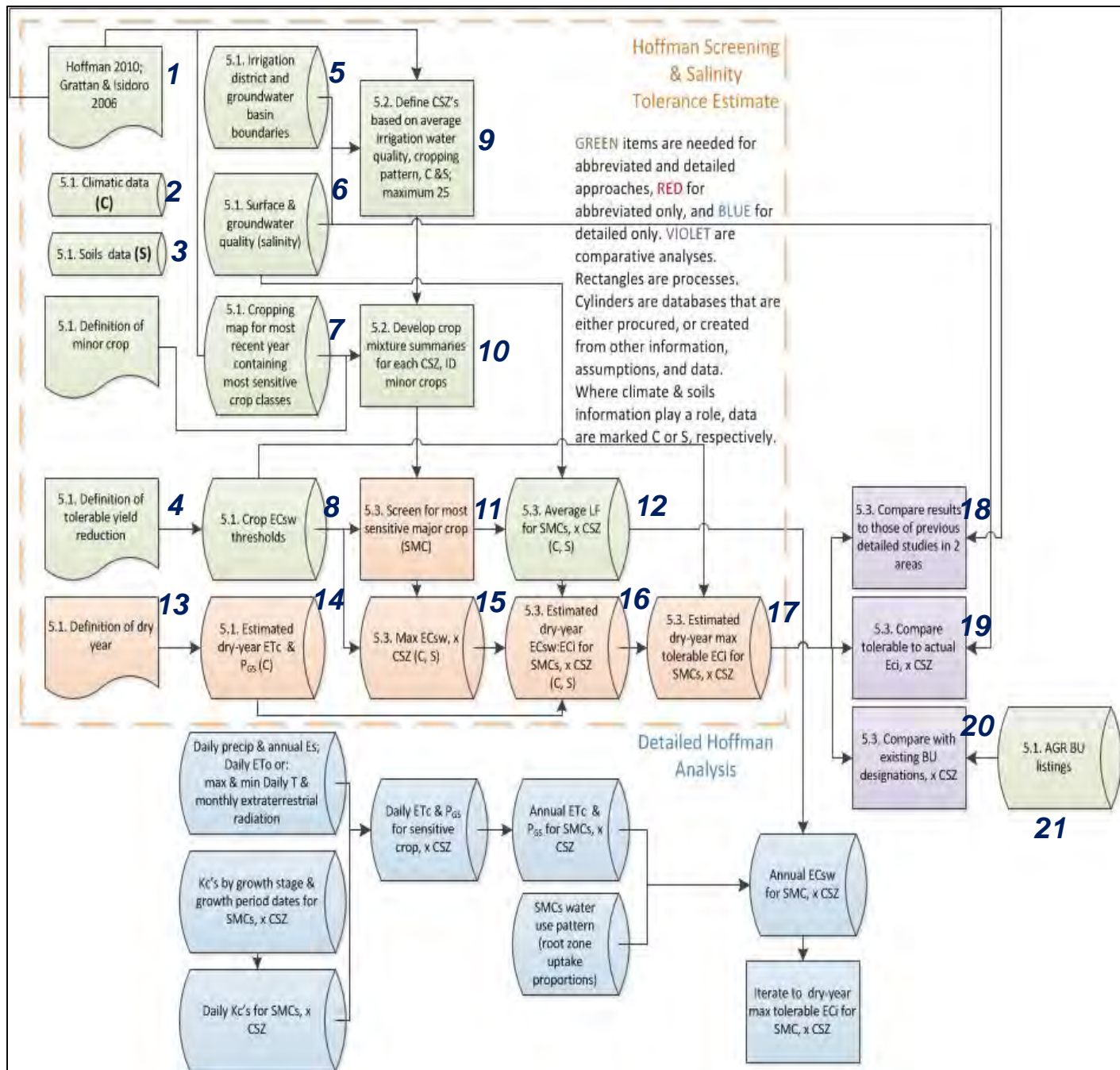
As a first step in executing this work, a process connecting protection of water quality for use in agricultural irrigation to underlying data was explored. The purpose of this step was to ensure that data organization and analysis would be focused, and produce a usable body of work. The

step proved helpful in guiding organizing the order and manner in which data inputs listed in the Workplan were employed to delineate the CSZs. Process steps leading to the desired outcome (protection of SMCs from undesired yield reductions due to poor irrigation water quality), are primarily driven by two key elements:

1. Sensitive Major Crops. These inform the process as follows:
 - Identification of locations in which SMCs tend to be grown.
 - Identification of water quality criteria (particularly the concentration of salinity) that protect crops grown in a locale from undesirable yield reductions due to poor water quality.
2. Hydrography. This informs the process by showing where the irrigation water in question comes from. This is important for two reasons:
 - Impairments of irrigation water quality can only happen at or upstream from the point at which irrigation water is applied. Therefore, water supply recharge areas need to be identified.
 - Practically speaking, lands that are not upstream of waters applied to sensitive crops cannot reasonably affect water applied to those crops. Therefore, protection of waters beyond the recharge areas for sensitive crop irrigation water might reasonably be referenced to different criteria.

When considered in this manner, the elements in **Figure 1** from the Workplan take a slightly different order, as follows:

1. The definition of CSZs becomes predominantly a matter of hydrography to facilitate linkage of water supplies and their recharge areas to areas of SMCs that they affect. Also, the CSZ must be delineated before SMCs can even be defined, since major crops' areas must exceed a threshold proportion of the area's acreage. As such, the CSZ delineation occurs earlier in the process. The same process applies to lands irrigated partly or predominantly with groundwater (also a data layer presented in this document), although subsurface hydrographic networks, as opposed to surface recharge/flow data, are needed. Unfortunately, no convenient Valley-wide data layer of subsurface flow networks exists. If it did, major recharge areas for specific locations would generally be smaller, and might often lie within the boundaries of the major surface hydrographic network. Consideration of subsurface hydrography was also not described in the Workplan. While subsurface hydrography is acknowledged and included as part of this methodology at a conceptual level, hydrography in the CST is at this point based on surface water. Where SMCs occur and where groundwater is a significant proportion of applied water, subsurface hydrography will need to be investigated and folded into the analysis. However, this work is expected to be site-specific, sometimes quite intensive, and necessary for a subset of Central Valley irrigated lands.



Note: Figure 1a shows the schematic of Task 5.2 analysis, as presented in the Workplan, with element numbering added. Numbers are referenced in Figure 1b to relate elements in the two charts.

Figure 1a Schematic of Task 5 Analysis as Presented in the Workplan

2. A preliminary identification of sensitive crops from the literature, and simplified calculation of irrigation water salinity (EC_w) thresholds, can be utilized early, before running the Hoffman model or its equivalent. Areas with concentrations of sensitive crops can be mapped quickly within the CSZs and linked to their water source areas.
3. Model inputs such as soils, climate, and management data can be mapped for these areas, and models can be run to provide refined EC_w thresholds.
4. Applied water quality in sensitive crop areas can be estimated and compared to thresholds to identify potential problem areas.
5. Actual or anticipated use of specific surface waters and/or groundwaters to grow sensitive crops can be more readily assessed by evaluating the hydrographic network to help focus management and regulatory attention into areas where they can feasibly have the desired protective effect.
6. Specific waters and their recharge areas can be more readily connected due to the hydrographic basis of CSZs.

This process is illustrated in a modified flow chart in **Figure 1b** of this Report. The new flow chart fits the Task 5.2 analysis into a broader, implementation-oriented context, with all of the elements of the Workplan retained. In **Figure 1b**, each process step was colored either green or blue, indicating whether it contained mainly crop (green) or hydrographic (blue) information. Steps where crop and hydrographic information are combined were colored similarly (but more lightly), according to the most dominant factor. A version of **Figure 1** from the Workplan, in which the process elements are numbered, is provided for reference in **Figure 1a**. The elements of **Figure 1a** are referenced by number (in parentheses) in the related elements of **Figure 1b**. In addition to the changes to the order in which input data are employed, **Figure 1b** takes a broader view that considers the end use of outputs to protect beneficial uses. As such, there are steps for which no Workplan element is cited. These steps have been added to more fully express the process points just listed. Some of the new elements are beyond the scope of this work, but are nevertheless recognized to illustrate practical connections to the regulatory process.

For the purpose of this discussion, it is useful to follow the illustrated process upstream, from the end use (on the right-hand end of **Figure 1b**), through preceding process steps (working leftward). What emerges is a picture of how crop and hydrographic information can be used together to spatially focus SMC investigations to most effectively inform AGR beneficial use narrative objectives. Steps referenced are the numbers at the beginning of the text in each process box of **Figure 1b**.

- Protection of sensitive major crops by setting the objective for AGR uses in specific waters (steps 17-21, informed by steps 6 and 7): For the reasons previously described, these steps focus on the water applied to SMCs, and are thus essentially hydrographic.
- Locate SMCs based on crop data (step 4): Water applied to these crops would have the most stringent target quality (salinity). Why are land cover data used here? Observed cropping patterns express decisions by thousands of individual agricultural producers, each decision being the product of an integrated weighing of factors (water availability and quality, soil and drainage conditions, climate, flood risk,

infrastructure [irrigation, transportation, crop processing, and artificial drainage systems], pest pressure, market conditions, grower culture, and regulatory conditions) that affect crop production/yield and therefore profitability. Cropping patterns are thus a phenomenon in which, from the standpoint of crop location, farmer behavior has practically integrated data we can only analyze in the abstract. This fact can be used to quickly and confidently define an area where sensitive crops are likely to be grown in the future. As will be shown later, SMCs tend to be found in spatial groupings (clumps), perhaps due to a discovery by farmers that in those areas, you can find combinations of factors (access to processors and markets, soil and climatic conditions, and water supply) that favor production of SMCs. These areas would be subject to change as controlling factors (water availability and quality, soil and drainage conditions, climate, flood risk, infrastructure [irrigation, transportation, crop processing, and artificial drainage systems], pest pressure, market conditions, grower culture, and regulatory conditions) evolve. Data layers from Task 5.1 might be employed to assess the potential for such shifts.

- Preliminary delineation of CSZs (step 3): The CSZ delineation is required at the outset, so that the proportion of irrigated acreage for sensitive crops may be evaluated, allowing distinction between major and minor crops within each CSZ. It would be best if this delineation had a basis that would come in handy later in the process. What is a reasonable basis for such a delineation? Although surface water is the predominant applied water source in most areas, groundwater is also widely used. Recharge zones for groundwater are more localized, and not extensively mapped. Irrigation and drainage districts and drainage basins were discussed in the Workplan, primarily as factors that might be helpful in placing CSZ boundaries to align with surface hydrographic boundaries. However, Central Valley surface water networks themselves have been extensively mapped and this mapping was incorporated into CV-SALTS' geographic databases as part of previous GIS tasks. This mapping is a more direct, robust, and accurate way to delineate hydrographic networks and boundaries than referencing district and approximate basin boundaries. Hydrographic boundaries will be the most salient factor when seeking to encompass surface water recharge areas that feed SMC areas. Therefore, surface hydrographic data were primarily employed to determine the CSZ boundaries throughout most irrigated areas of the Central Valley, resulting in 22 CSZs. It is fully anticipated that, while the CSZ boundaries are a helpful starting point, actual recharge areas will often lie within only a part of a CSZ. In other cases, they may (despite the hydrographic basis of CSZ boundaries) extend into a neighboring CSZ. It is hoped, however, that because of the manner in which the CSZs have been delineated, the most important water supply recharge areas will frequently be found within the same CSZ.
- Preliminary identification of water quality thresholds (steps 1, 2, and 5): Salt concentrations that might cause yields to be unacceptably affected by a given crop can in most cases be estimated from research results for that crop. These thresholds do not take into account all of the factors that a Hoffman or similar analysis do, but they are useful in ranking the relative sensitivity of crops so that SMCs can be identified for mapping purposes.

- Determine water quality targets based on actual water use and crop sensitivity (steps 13 and 16): The targets are determined by the sensitivity of the crop in question, when grown in the specific environment of the area in question, with irrigation practices defined as accurately as practicable for that area and crop. This is accomplished by the method developed by Hoffman, or by an analogous method.
- Compile and analyze foundation data to inform water quality target (Hoffman or similar) analysis (steps 11, 12, 14, and 15).
- Analyze water supply sources, including mixed use of surface water and groundwater, in SMC areas (steps 8-10).

Again, this summary of how the multiple data themes were considered, prioritized, and employed in this work is intended to orient readers by clarifying the logical connections to the Workplan, and explaining why the work should be suitable to inform the AGR objective setting process. Additional description of the methods employed, and the results of the work, are contained in later sections.

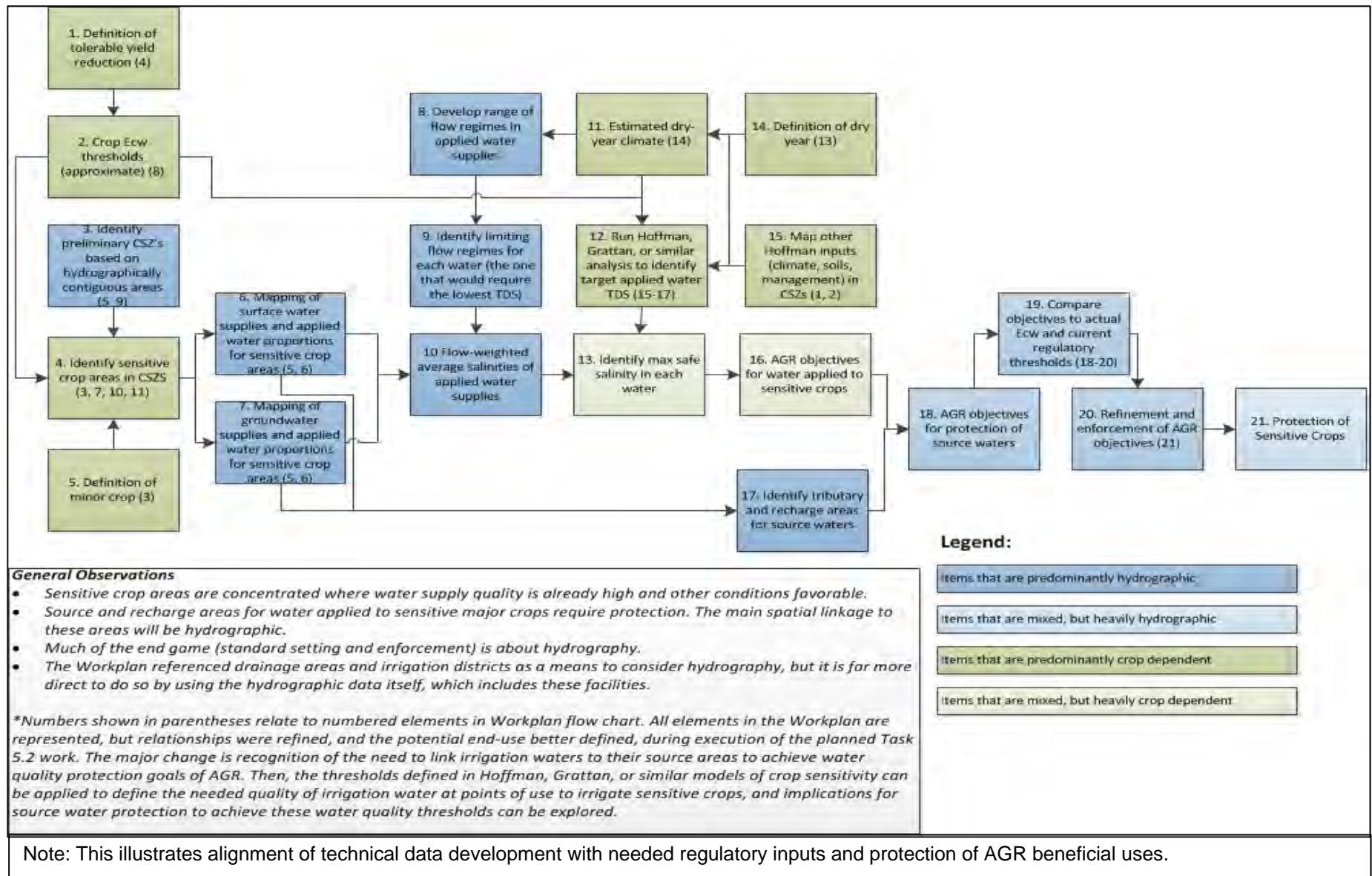


Figure 1b Schematic of Hypothetical AGR Implementation

2. Data Sources and Types

This section describes the main data sources and types that were used for the development of the individual GIS data layers for Task 5.1.

2.1 Data Sources

This data collection effort consisted of compilation of readily available data from multiple sources. Data Source Matrix presented in the GIS Task 5 Workplan was developed at the time of the GIS project scope preparation to highlight potential data sources that could be useful for the GIS project data needs, including Task 5. These potential data sources were used as a guideline for Task 5.1 data layers (Subtasks 5.1.1 through 5.1.8). During the actual execution of the work, the focus was on datasets that were most pertinent to the Task 5.1 layers and Task 5.2 analysis. In addition, other datasets that were generated as part of the previous GIS project (e.g., Tasks 3 and 4) and the ICM project were considered and included for Task 5, as described below. The major sources of data that were selected for Tasks 5.1 and 5.2 included the followings:

- Teale GIS Solutions Group;
- Environmental Systems Research Institute, Inc. (ESRI);
- U.S. Bureau of Reclamation (USBR);
- Central Valley Regional Water Quality Control Board (CVRWQCB) or Region 5;
- U.S. Geological Survey (USGS);
- U.S. Department of Agriculture (USDA) National Resources Conservation Service (NRCS);
- California Department of Water Resources (DWR);
- Kings River Conservation District (KRCD, 2013) and references they suggested (Page and LeBlanc, 1969);
- Luhdorff & Scalmanini (2003);
- Hanson et al. (2006); and
- Specific Watershed Analysis Risk Management Framework (WARMF) model runs and underlying data.

Table 1 summarizes the major data sources and types analyzed for preparing the Task 5.1 data layers (Subtasks 5.1.1 through 5.1.8) and presents individual data sources used to complete each layer.

Table 1 Data Sources and Types

Data Source	Data Types	Purpose of Data	Description of Data Source
Teale GIS Solutions Group	CVRWQCB (Region 5) boundary	Subtask 5.1.1	Region 5 boundary generated by Teale GIS Solutions Group was incorporated into the GIS layers.
ICM Project	Initial Analysis Zone (IAZ) boundaries	Subtask 5.1.1	IAZs established for the ICM project
ESRI	Political boundaries (e.g., counties and cities)	Subtask 5.1.1	ESRI 2010 Datasets
USBR and DWR	Federal, State, and private irrigation and water districts	Subtask 5.1.1	USBR Mid-Pacific regional office (MP), MPGIS Service Center in coordination with DWR.
CVRWQC	Drainage basin boundaries	Subtask 5.1.1	Drainage basin boundaries in the Central Valley were digitized for Task 5.1 from the CVRWQCB Staff Report (1992) that was prepared as part of the Inland Surface Waters Plan (ISWP) (CVRWQB, 1992).
USGS	Hydrologic Unit	Subtask 5.1.1	California Spatial Information Library (published on 11/18/2004).
	National Hydrography Dataset (NHD)	Subtask 5.1.5	USGS (http://nhd.usgs.gov/data.html). Beneficial Use mapping was prepared under GIS Task 3 (This data layer will be included in the Phase 1 of Task 5.3 and will be compared with results for one of the CSZs).
	Water quality	Subtasks 5.1.3 and 5.1.4	Fresno Area Groundwater Report by Page and LeBlanc (1969).

Table 1 (Continued) Data Sources and Types

Data Source	Data Types	Purpose of Data	Description of Data Source
USDA NRCS	Soil survey data: electrical conductivity (EC), sodium adsorption ratio (SAR), drainage classes, depth to water table, and available water supply (AWS)	Subtask 5.1.2	NRCS website (http://soildatamart.nrcs.usda.gov/)
KRCD	Irrigation water quality	Subtasks 5.1.3 and 5.1.4	Surface water quality was gathered for the KRCD area in response to the irrigation water quality request, and used to map salinity of applied water.
WARMF	Applied water quality	Subtasks 5.1.3 and 5.1.4	Applied water quality established from existing WARMF runs.
DWR	Crop cover	Subtasks 5.1.6	http://www.water.ca.gov/landwateruse/lusrvymain.cfm
	Water quality (total dissolved solids (TDS)) from agricultural wells	Subtasks 5.1.3 and 5.1.4	Groundwater quality dataset that is being developed under GIS Task 4 was incorporated into Task 5.1 data layers. Data are based on the DWR Water Data Library (WDL).
	Agroclimate data: evapotranspiration (ET), precipitation, and applied water (AW)	Subtask 5.1.8	http://www.water.ca.gov/landwateruse/anlwuest.cfm
Luhdorff & Scalmanini	Water quality	Subtasks 5.1.3 and 5.1.4	Monitoring Program Report, Mendota Pool Group (Fresno Slough Report, dated 2003).
Hanson et al. (2006)	Crop sensitivity data	Subtask 5.1.8	Salinity threshold of crops were compiled from literature and joined with DWR cropping pattern data.

2.2 Task 5.1 Overview of GIS Data Layers

Data compiled from each of the major data sources are described below. Data sources are grouped according to the eight data layers prepared under the Subtasks 5.1.1 through 5.1.8. Data layers for Subtask 5.1.1 are associated with the jurisdictional boundaries and they are presented in this section. In addition to the jurisdictional boundaries, a number of datasets for soils, irrigation water sources and quality, climatic, crop distribution and sensitivity, and management were utilized and analyzed for Task 5.1. The data layers associated with these datasets are described below under Subtasks 5.1.2 through 5.1.8 and the resulting GIS data layers are presented in Sections 3 and 4.

2.2.1 Subtask 5.1.1 – Political or Other Boundaries and Base Map Information

This GIS layer builds off the Task 3 baseline map layers and adds other boundaries that are geographically pertinent to the CST. The Subtask 5.1.1 includes the jurisdictional boundaries as outlined in the Task 5 Workplan. These boundaries include the political boundaries (counties and cities), CVWRQB jurisdiction (Region 5) boundary, irrigation, water, and reclamation district boundaries as well as the IAZs from the ICM project. In addition, during the analysis of Task 5.1, other boundaries that were considered pertinent to the CST were analyzed and incorporated into Task 5.1 layers. These additional boundaries include the Hydrologic Unit boundaries by the USGS and the drainage basin boundaries defined by the CVRWQCB. **Figure 2** shows the irrigation and water district boundaries within the Region 5 boundary. **Figure 3** shows the Hydrologic Unit boundaries together with the drainage basin boundaries and the IAZs. Each of the boundaries included in the Subtask 5.1.1 are briefly described below. Among the boundaries shown in **Figures 2** and **3**, the political boundaries (e.g., counties and cities) and the Region 5 boundary serve as the base maps for Task 5 and they appear on the majority of the Task 5.1 maps.

- Political boundaries include the country and city boundaries and used on the base map for Task 5 (**Figure 2**).
- The Region 5 jurisdiction boundary was generated by Teale GIS Solutions Group and is on the base map for Task 5 (also for GIS Tasks 3 and 4) (**Figure 2**).
- Irrigation, water, and reclamation district boundaries are based on the data from the USBR and DWR (**Figure 2**).
- IAZ boundaries employed in the ICM project are shown on **Figure 3** for reference.
- Hydrologic Units are based on the USGS NHD (**Figure 3**). They delineate water bodies (major rivers) and represent the various drainage basins at the watershed level. Each Hydrologic Unit is progressively subdivided into smaller levels called Hydrologic Areas that represent the major tributaries. These standardized watershed delineations tend to group common surface water supplies. **Figure 3** represents the Hydrologic Unit boundaries and the numbers associated with each Hydrologic Unit.
- Drainage basin boundaries in the Central Valley were digitized from the CVRWQCB Staff Report (1992) that was prepared to report on the Inland Surface Waters Plan (ISWP). These drainage basins represent areas of similar hydrology and common

discharge locations. As part of the ISWP, CVRWQCB identified the water bodies dominated by agricultural drainage and constructed agricultural drains in Region 5. Information was gathered from over 340 water, reclamation, and drainage entities that cover over 90 percent of the Region 5's irrigated area. For developing the drainage basins, the Region 5 was initially divided between foothills and the valley floor. The valley floor was then divided into four distinct areas with boundaries similar to those of Basin Plan 5A (Sacramento River Basin), 5B (Sacramento-San Joaquin Delta), 5C (San Joaquin River), and 5D (Tulare Lake). The four valley zones were further subdivided into the drainage basins that are shown on **Figure 3**.

2.2.2 Subtask 5.1.2 – Soil Mapping

Soil data were employed to characterize soils on which crops are grown in the CSZs. Soil survey information from the NRCS' SSURGO database are available in GIS (shape file) format, and can be linked to extensive data associated with unique mapping units through the use of a structured Microsoft Access database template, and an ArcGIS extension called "Soil Data Viewer". Mapping units are the basic units of soil survey, characterizing soil profiles as they occur on the landscape, and with which soil properties (such as those that affect crop susceptibility to salinity in irrigation water) have been defined. A given mapping unit is named for a local landmark, and contains basic information. Thus, a Sacramento sandy loam, 0 to 2 percent slope, would have been originally mapped in or near capital of California, occur on land less than 2 percent in slope, and have a sandy loam surface texture. Normally a great deal of other data about this mapping unit would also be described, all of which is contained in the SSURGO database. The shape files delineate polygons with which mapping units are associated, and by this association, all of mapping unit characteristics are also associated with polygons bearing the mapping unit's name. This is the most common and standard format in which soil survey are digitally accessed and analyzed in the United States at this time. Additional information about SSURGO data and their use can be found at <http://soils.usda.gov/survey/geography/ssurgo/description.html>.

Soils data were acquired from the NRCS Soil Data Mart. Data were downloaded for a total of 29 survey areas, covering the majority of the irrigated land in the Central Valley. Tabular and spatial data were downloaded, analyzed, and used in mapping. Tabular data were first imported into the Microsoft Access database and then spatially analyzed in ArcGIS. Data analyzed in GIS include those that could be of interest in assessing the influence of saline irrigation water on sensitive crops. These were electrical conductivity (EC), sodium adsorption ratio (SAR), drainage classes, depth to water table, and available water supply (AWS) at two different depth intervals: 0 to 20 centimeters (cm) [about 0 to 8 inches] and 0 to 100 cm [about 0 to 40 inches]. A separate GIS layer was prepared for each of these five soil properties. The resulting GIS data layers are presented later.

2.2.3 Subtasks 5.1.3 and 5.1.4 – Irrigation Supply Water Sources and Quality

Irrigation water quality (salinity) can be used during the development of the CST for conducting comparisons to salinity thresholds that will be performed as part of Phase 1 of Task 5.3 in a selected area. However, representative irrigation water quality data are currently lacking for many geographic areas in Region 5. The following data collection efforts were completed, including a data request from CV-SALTS to stakeholders, as well as compiling other sources

that are being developed as part of the ICM and GIS projects. The water quality data gathering effort focused on salinity (TDS), as Task 5 focuses on salinity effects on irrigated agriculture.

Applied Water Data Request from CV-SALTS to Stakeholders

A data request was developed by the LWA Team to facilitate compilation of readily available irrigation water quality data from CV-SALTS stakeholders. The data request was submitted in April 2013 with the main intent to correctly represent the characteristics of irrigation source water in areas of the purveyors of irrigation water. Data requested included estimated average annual salinity of applied surface water and groundwater, the primary sources of surface water applied to crops, and the approximate ratio of groundwater to surface water applied.

In response to the data request, the KRCD was the one, high-priority area (for which little data were already in hand, and on which a detailed salt and nutrient balance was being developed as part of the ICM project) that provided data. Key references were KRCD (2013), Page and LeBlanc (1969), and LSCE (2003). Estimates were for the flow-weighted average applied water quality, in this case at a very fine scale of one square mile. Methods for development of these applied water quality estimates are documented in the CV-SALTS ICM Task 8 report. Similar data for other areas may be forthcoming in the future, but are not currently available. The data request is in **Attachment A**, along with a table documenting the data request activities to date. This effort was completed with no additional water quality data from stakeholders by the time of this Report.

Applied Water Quality Data from WARMF

Applied water quality (salinity) data available from existing WARMF model runs were compiled in an effort to develop a representative applied water quality (in the form of TDS). TDS was calculated within the WARMF domain based on individual estimates of applied surface water and groundwater depth (inches per year) and quality. The sum of applied, dissolved ions' masses was divided by the sum of the applied water volumes, yielding the applied water TDS concentration estimate.

Groundwater Quality Data from Agricultural Wells

Groundwater quality data are currently being developed as part of GIS Task 4 (Kennedy/Jenks, 2013a). As part of Task 5, salinity (TDS) of agricultural wells was mapped, based on data available from DWR Water Data Library (WDL). Additional datasets were added based on data available from the RWQCB Waste Discharge Requirements (WDR) Dairy Data⁵ and data compiled from the National Water Quality Monitoring Council (NWQMC). RWQCB WDR Dairy Data includes TDS from monitoring wells with data spanning from 1999 to 2008. NWQMC dataset provides groundwater TDS but no information on well types was available. Although the RWQCB WDR Dairy Data provide data from monitoring wells and NWQMC dataset does not identify well types, these two datasets were included to help infer groundwater quality from non-agricultural wells. For the three datasets, the most recent values were presented

⁵ RWQCB WDR Dairy Data are data solely for dairies that fall under the RWQCB's General Order (WDR General Order R5-2007-0035) from 2007 for existing milk cow dairies. These data were received by special request for a different project conducted by the LWA team in 2009 for Dairy CARES. With agreement from dairies, this readily available dataset was made available in support of the GIS project (also for the ICM).

to show the current conditions of groundwater quality for TDS. A more detailed explanation of these datasets is provided in the GIS task 4 Report.

2.2.4 Subtask 5.1.5 – Agriculture Beneficial Use Listings

This data layer was completed under Task 3 of the GIS project. The GIS map layer and the geodatabase were submitted to CV-SALTS in April 2013 (Kennedy/Jenks, 2013b). Under Task 3, beneficial uses and water quality objectives for the existing waters, including AGR, were linked to the updated NHD 2012 dataset. A GIS layer with the major water bodies, containing the designated beneficial uses (including AGR) associated with those water bodies, will be incorporated into Task 5. This data layer will be presented as part of Phase 1 of Task 5.3 report and will be compared with results for one of the CSZs in Phase 1 of Task 5.3.

2.2.5 Subtask 5.1.6 – Crops Grown

When the scope for Task 5 was prepared, potential sources for cropping patterns were identified, including land cover layers from DWR, WARMF, and Central Valley Hydrologic Model (CVHM). Upon further review of these three sources, the DWR dataset was selected for the Task 5 analysis as it provides a complete coverage of cropping patterns at the field scale. The DWR dataset is also the basis for WARMF and CVHM land coverage (which contain less information), and contains the most recent mapping from DWR. Certain land cover classes, such as dairy land application, urban classes, and native cover classes, are not mapped in detail by DWR. However, none of these areas of relatively lower detail relate to the SMCs and irrigated land acreages that are the focus of this work. DWR mapping, on the other hand, maps these crop cover classes quite well.

Periodically DWR maps crops grown in fields within a county. The most recent such data were merged and employed for the Central Valley counties to determine the locations of crops. Due to crop rotation and market shifts, changes will occur for particular fields. However, cropping patterns and proportions within regions should remain generally similar over the short term (5 to 10 years), other than changes due to market shifts (which are often relatively gradual). Over the longer term, concentrations of particular crops may shift more significantly. Nevertheless, crops will continue to be found where conditions are favorable for their profitable cultivation.

Crop locations were based on the DWR land cover data. For each CSZ, crops were screened based on sensitivity to irrigation water salinity to identify the SMCs (see crop sensitivity discussion below). Major crops were defined as those occupying more than five percent of the irrigated land within a CSZ. An alternative approach to defining major crops is described in **Attachment B**. This definition is a policy consideration that is beyond the scope of this technical report. While CST results will be sensitive to the definition, the methods can be applied in conjunction with any major crop definition that is in current use.

2.2.6 Subtask 5.1.7 – Current and Historic Value of Crops Grown

This parameter has been de-emphasized based on stakeholder input. It is not anticipated that it will inform the development of AGR regulatory targets, and thus no crop value data were collected. This is consistent with the Workplan.

2.2.7 Subtask 5.1.8 – Other Factors Related to Salt Sensitivity

The main constraints to crop growth other than climate and soils would be quality of the existing water supply, the type of crop (irrigation) management, and intrinsic limitations (crop and cultivar yield potential under favorable conditions). Irrigation water quality data were just discussed. Other factors discussed below include climate, crop sensitivity, and irrigation management related factors. The most efficient way to assess multi-factorial questions of which crops can and will be grown where is to locate where farmers have historically elected to grow the crop, to study the reasons for these choices, and then to project that knowledge into areas or timeframes of interest. This type of land use forecast, while conceivable, is beyond the scope of the current work.

Climate Data

CV-Salts has provisionally defined the driest year for which crops need to be protected for AGR beneficial uses (as they pertain to salinity) as a 95th percentile drought year. This threshold is used throughout this report to define “drought”.

Climate conditions for statistically average and drought years were developed comprehensively for the Central Valley. The estimates are regional and useful for larger-scale planning purposes; they should be replaced with data from local meteorological stations for more site-specific evaluations.

Agroclimatic variables for crops have been summarized by DWR for each detailed analysis unit (DAU) throughout the Central Valley. A similar climatic summary of the region would be quite labor intensive if developed from basic CIMIS data; such an analysis is beyond the scope of the current work.

Climatic parameters reported for crop can be used to estimate reference evapotranspiration (ET_o), effective precipitation (EP), and an index of applied water (AW). To do this, data for alfalfa are particularly handy, since this crop grows nearly year-round, and is cultivated in most areas of the Central Valley. Its ET is therefore a reasonable approximation of ET_o, and EP for it reflects the maximum precipitation that might infiltrate the soil. These parameters are only reported for a 4-year data period, 1998 through 2001. CIMIS data from four of the oldest (at least 1983-2012) stations in the Central Valley (Kettleman City, Five Points, Davis, and Gerber, running from south to north) were analyzed to relate 1998-2001 means of reference ET, precipitation, and a calculated estimate of applied water (all from the CIMIS data record) to the median and 95th percentile drought year for these three parameters. These relationships were used in conjunction with the alfalfa agroclimatic parameters to estimate regional long-term median and drought parameters for each DAU.

Again, while the regional climatic data will be helpful at the general level, site-specific studies should be based on the best available local (CIMIS or comparable) data. Also, in irrigated systems, the severity of actual drought stress in a crop may depend more greatly on operational, infrastructure, and institutional limits to irrigation water availability, than on the length of climatic dry spells. Most of these non-climatic factors, while important, are also beyond the scope of the current work.

Crop Sensitivity Data

CV-SALTS has provisionally defined 95 percent of maximum relative yield as the threshold of protection for the AGR beneficial use. This threshold is employed throughout the current work.

The main focus with respect to crop sensitivity was salinity, which can be measured and expressed as either electrical conductivity (EC) or TDS. Most of the data referenced in this Report were measured in TDS. Much of the crop work was performed in EC. Crop applied water salinity (EC_w) targets were converted to TDS for purposes of comparability to water quality data. Soil salinity levels (EC_e), on the other hand, are not converted to TDS, as there is no meaningful way to do this.

The main reference for crop sensitivity data was Hanson et al. (2006), especially Tables 2 through 5. These were linked to DWR land cover classes so that crop sensitivity levels could be mapped. The methodology for assigning crop sensitivity is primarily documented by many, including Maas (1990) and Ayers and Westcot (1985). Crop sensitivity data of the type shown in **Figure 4a** for Common Bean were developed under Task 5.1 to identify the major sensitive crops in each CSZ. These functions relate soil salinity levels to relative crop yields, and vary widely depending on the level of the plant specie's physiological salt tolerance. In addition to quantitative functions, crops are assigned to four narrative classes, ranging from Sensitive to Tolerant. These functions were used to develop a screening level list of applied water targets, based on a simplistic version of the Hoffman calculations.

Leaching fraction is the ratio of the depth of applied water leached to the total depth that infiltrates. This fraction, along with other factors, determines the quantitative relationship of the average root zone salinity (again, EC_e) to salinity in applied water (again, EC_w; see **Figure 4b**). A commonly assumed and recommended leaching fraction is 0.15 (shown in red on **Figure 4b**). Assuming this leaching fraction and the water uptake distribution shown on **Figure 4b**, the maximum EC_w required to produce 95 percent maximum relative yield of each crop shown in **Figure 4c** was calculated, and converted to TDS. Maximum target applied water salinity in TDS ranges from less than 600 to over 6000 mg/L. Major crops in the more sensitive range (shown in the expanded plot in the right-hand half of **Figure 4c**) are the most important in the CST. Due to the simplicity of this calculation, site-specific and climatic and management data that can be considered in Hoffman or similar analyses have not been fully considered. Therefore these maxima, while helpful in quantitatively ranking crop sensitivity, are unsuitable for use in determining final AGR target concentrations.

There are a number of crops for which no quantitative salinity function has been defined. These crops are listed, along with their salinity tolerance classes in **Table 2**.

Irrigation Management

In California as elsewhere, management factors do vary. They are extremely difficult to assess quantitatively at a broad scale due to lack of data. DWR spatial land use datasets contain information on water sources used and irrigation type that pertain to irrigation management. Both datasets were mapped separately under Task 5.1. As management factors go, these are informative, since irrigation water source and irrigation method can affect the actual yield impact of a given level of EC_w.

Table 2 Crops for which Coefficients have not been Measured

Sensitive	Moderately Sensitive	Moderately Tolerant	Tolerant
Okra	Brussels sprouts	Fig	Jojoba
Parsnip	Cauliflower	Jujube	Kenaf
Apple	Kale	Papaya	Millet, channel
Avocado	Kohlrabi	Pineapple	Oat
Cherimoya	Pumpkin	Pistacio	Alkali grass, nuttall
Cherry, sweet	Watermelon	Pomegranate	Alkali sacaton
Cherry, sand	Castorbean	Safflower	Kallar grass
Currant	Bentgrass	Brome, mountain	Kikuyagrass
Gooseberry	Bluestem, Angleton	Canary grass, reed	Oat (forage)
Lime	Brome, smooth	Clover, Hubam	Paspalum, Polo
Loquat	Buffelgrass	Clover, sweet	Salt grass, desert
Mango	Burnet	Dhaincha	Wild rye, Altai
Passion fruit	Clover, white Dutch	Fescue, meadow	Wild rye, Russian
Pear	Dallis grass	Guinea grass	
Persimmon	Glycine	Panicgrass, blue	
Pummelo	Grama, blue	Paspalum	
Raspberry	Milkvetch, cicer	Rape	
Rose apple	Millet, Foxtail	Rescue grass	
Sapote, white	Oatgrass, tall	Rhodes grass	
Tangerine	Sirato	Ryegrass, Italian	
Sesame	Eucalyptus	Trefoil, broadleaf bird's foot	
Walnut	Timothy	Wheat grass, intermediate	
Nursery		Wheat grass, slender	
		Wheat grass, western	
		Wild rye, Canadian	
		Kiwi	

3. Crop Sensitivity Zone Delineation and Sensitive Crop Locations

This section describes the methodologies used for the development of the CSZs. It expands on (but does not repeat) Section 1.3. Therefore, this section is best read with the conceptual explanation presented in Section 1.3 (and illustrated on **Figure 1a**) firmly in mind.

3.1 Delineation of Crop Sensitivity Zones

Crop Sensitivity Zones were developed to facilitate the use of data discussed in Section 2 to inform AGR beneficial use objectives. Water quality targets that are protective of this beneficial use need to maintain adequate quality of the irrigation water supply. Infrastructure determines the groupings of turnouts that draw water from similar sources, and this infrastructure exists in surface and subsurface hydrographic networks. Surface hydrographic networks are mapped more thoroughly than groundwater recharge zones and subsurface flow patterns, and are thus a more reliable initial basis for delineating CSZs. An initial delineation is essential to the identification of SMCs. This is because the SMC definition is a crop's acreage divided by the total irrigated land acreage, both as measured *inside the CSZ*. Therefore, these acreage figures can only be assessed after an initial delineation of CSZs.

Locations of sensitive crops, when viewed across the entire Central Valley (presented later in Figure 8a) showed many geographic concentrations of particular crops into groupings of fields. Recharge areas for these groupings of fields were observed to be relatively restricted in many cases, suggesting that protection of their water supply might naturally focus on fairly defined areas, some smaller than those envisioned in the Workplan (which estimated 25 CSZs in the whole Central Valley). It became evident that the relatively large CSZs would be most useful if primarily defined by hydrographic boundaries. This way, the main recharge areas for sensitive crop irrigation waters would be more likely to fall within the CSZ within which the crops occur. The preliminary CSZ boundaries used to identify SMCs, which followed hydrographic boundaries, were thus retained as final boundaries of 24 final CSZs.

These same hydrographic groupings gather features that are also related to AGR beneficial uses:

- Turnouts that could be controlled from a common distribution point, should this be necessary;
- To the extent that they are contiguous with surface hydrographic areas, groundwater basins; and
- To the extent that available irrigation water quality drives cropping choices, groupings of major, sensitive crop plantings that may warrant protective standards.

From an implementation standpoint, the importance of the first point can be illustrated by the following examples, figures reference hydrography but they are not extended to constitute to a direct application of the tributary rule, rather the focus is on identifying recharge areas that most

greatly influence applied irrigation water quality. Furthermore, the examples given are schematic and conceptual in nature.

- **Surface Water Recharge Areas with Co-Mingled Surface Drainage (Figure 5a):** In this illustration, irrigation of SMCs is primarily with surface water, and surface return flows are primarily routed to channels that are tributary to downstream irrigation supply. In this case, criteria developed based on sensitive crops might reasonably apply to the channel network upstream of each patch of SMCs, and (by extension) to up-watershed irrigated lands, which might include salt sources discharging to this network.
- **Surface Water Recharge Areas with Isolated Surface Drainage (Figure 5b):** In this illustration, surface return flows are collected in drains that are not tributary to downstream SMCs, but rather conveyed in an isolated drainage collection network. Due to this lack of connection, applied water quality targets for SMC patches shown would be unrelated to surface water discharges from lands in the area, and thus would not seem relevant to AGR water quality objectives, where these objectives are driven by the needs of crops in these same SMC patches.
- **Groundwater Recharge Areas (Figure 5c):** In the SMC area shown on the left side of **Figure 5c**, only surface water is applied. Unless irrigation with groundwater is predicted for the area, applied water quality targets based on SMCs in this patch would be unrelated to AGR objectives for groundwater. On the other hand, SMCs in the right-hand patch are at least partly irrigated with groundwater. Therefore, concentration targets based on this crop patch could inform AGR water quality objectives for that groundwater and areas that recharge it with dilution and other factors appropriately accounted for.

Again, to facilitate these types of considerations during implementation, hydrographic data were primarily employed to determine not only the preliminary, but also the final CSZ boundaries, as hydrography tends to group similar and interconnected surface water supplies. Other factors, such as cropping patterns, source water quality of irrigation water, soils, climatic conditions, and management factors were then mapped within the CSZs. All of these data themes can then be used to analyze sensitive crops and their irrigation water quality requirements within a CSZ. Regulatory application of results will be facilitated by the hydrographically contiguous nature of the CSZ. Again, further explanation of the conceptual basis for this process is contained in Section 1.3, and illustrated on **Figure 1b**.

The initial assessment resulted in a selection of 19 focused zones based on the Hydrologic Unit boundaries presented in **Figure 3**, drawing the names for each unit from their numeric designations in the original hydrographic database. The selected zones cover the majority of irrigated areas of the Central Valley. Due to their large size, three zones (Hydrologic Units 20, 51, and 58) were further refined into smaller areas within the Hydrologic Area boundaries. The new units were numbered by adding a “1” or a “2” to the name drawn from the hydrographic database. This methodology resulted in a total of 22 CSZs.

Other data themes listed in the Workplan as potentially affecting CSZ boundaries would then be primarily employed for their other intended purposes:

- Crop data in conjunction with soil, climate, and management: Compiled in Task 5.1 (this Report) for use per Hoffman in Task 5.3 to develop refined crop sensitivity targets. The stage is thus set for Task 5.3, which cannot be performed without these inputs. The implied multivariate determination of CSZ boundaries (including several of these variables as inputs) was found to be inconsistent with the broader goal of a usable method to inform water quality criteria in narrative AGR objectives, and was thus not pursued. The reasons for this are those described in the preceding paragraphs.
- Irrigation and drainage districts, drainage basins: The intended purpose of these data was to understand the routing of water to sensitive crops. Hydrographic data are more precise and appropriate in this regard. Nevertheless, these data were collected and mapped as part of Task 5.1 (this report), per the Workplan, and are available for use. Drainage basin boundaries have been compared to the CSZs.

3.1.1 Crop Sensitivity Zones and Drainage Basins

During the development of the CSZs, boundaries of the drainage basin areas from CVRWQCB (1992) were overlaid on the CSZ boundaries. Drainage basins are not strictly hydrographic, but rather were delineated based on input from water managers throughout the region, and are intended to reflect how drainage is actually managed. Drainage is one part of the hydrographic network on which the CSZs were based, with irrigation supply, natural, and other channels making up the rest of that network. **Figure 6** shows the 22 CSZs in comparison to the drainage basin areas. The two sets of boundaries subdivide a similar region into units of comparable scale, with internal boundaries that in some cases nearly match. The fact that drainage hydrography was considered in each analysis is probably the reason for this similarity.

3.2 Sensitive Crop Locations

The focus of this section is the location and quantification of SMC acreage in the CSZs. CV-SALTS has identified SMCs as sensitive crops that occupy more than 5% of the irrigated land in a CSZ (see **Attachment B**).

Figure 7 shows the distribution of crops grown in the Central Valley based on the DWR data. The location of major sensitive crops is shown on **Figure 8a**. Major sensitive crops are defined as those occupying more than 5% of the irrigated land within a CSZ. **Figure 8b** shows the location of minor sensitive crops, which are defined as those that occupy less than 5% of the irrigated land within each CSZ. The acreage of each crop in each CSZ is listed in **Table 3**. Four levels of crop sensitivity are listed: Sensitive (S), Moderately Sensitive (MS), Moderately Tolerant (MT), and Tolerant (T). As described earlier, the crop pattern data were screened to identify the major and minor crops within each CSZ.

Figure 8a shows the distribution of the SMCs (i.e., those rated S or MS), . The focus of the mapping shown in **Figure 8a** is crops in the “Sensitive” class. However, additional classes exist, and can be used to develop suitable target applied water salinity concentrations for areas where no sensitive crops exist. These concentrations would of course be higher.

Figure 9 displays the estimated average maximum root zone salinity requirement of crops to achieve 95% of crop yield potential. Crop potential is defined here as the yield that could be

achieved under favorable conditions with no yield limitation from irrigation water salinity. **Figure 10** is similar, but the estimated threshold is for applied water TDS. As described previously, these estimates do not account for a number of factors that can influence crop yield response to salinity, and so should be viewed as a helpful way to differentiate quantitatively among degrees of crop sensitivity and potential yield impact of saline irrigation water. This screening method, commonly used in irrigation assessment and planning, takes account of published, quantitative functions relating soil salinity to crop yield reduction, and quantitative relationships between applied water salinity and salinity of the root zone (soil). The latter requires an assumed leaching fraction, which CV-SALTS stipulated should be 15%. The yield functions are shown in **Table 4** and illustrated on **Figure 4a**, and the soil-water functions are illustrated in **Figure 4b** and **4c**. A fuller analysis, taking climatic, management, and soil conditions into account, is needed to identify applied water salinity targets. This is the work that is scoped under Task 5.3, employing the data displayed throughout Section 4 of this Report.

It is anticipated that locations and specific requirements of sensitive crops will be helpful in defining irrigation water quality requirements within the CSZs. Hydrographic data can be used to determine recharge areas that could feasibly influence irrigation water supply to areas where SMCs are expected to be planted. This use of hydrographic data is conceptually illustrated for two CSZs. **Figures 11a** and **11b**, respectively, show the surface tributary area upstream of SMC concentrations in CSZ 202 and 582. The area can be evaluated relative to hydrographic connectivity illustrated in **Figures 5a** through **5c** (discussed previously) when seeking to identify AGR water quality objectives that will be protective of these crop areas. Basic data to perform this type of detailed analysis is provided in this Report, but the detailed analysis itself is beyond the scope of the current work. Please note again that these figures are not intended to imply the strict application of the tributary rule, rather that hydrographic network could be helpful in differentiating between areas that could or could not influence applied water quality in an area where sensitive crops are being grown.

Table 3 Summary of Total Acreage of Crops by CSZs

Crops and Sensitivity Thresholds		Crop Sensitivity Zones (CSZs)																								
		4	7	8	10	11	15	19	31	44	60	61	201	202	31	35	41	44	45	57	75	511	512	581	582	
Sensitive (S)	Almonds	26,569	0	1	0	7,205	1,677	154	74	347	0	745	34,732	30,339	12,579,355	850,644,038	130,079,204	8,920,872	255,269,365	111,668,597	5,236,161	254,979,364	85,544,121	311,469,557	359,903,478	
	Apples	72	23	0	953	61	628	2	84	2,049	0	0	0	260	15,710,369	8,595,771	975,678	982,975	10,842,864	1,033,607	2,779	10,048,472	7,722,829	528,168	10,702,434	
	Apricots	15	0	0	0	147	2	0	2	1,143	22	0	0	2	42,963	1,119,043	32,882,147	4,070,315	189,797	1,804,459	4,354,845	3,609,950	5,066,178	3,153,350	450,394	
	Avocados	0	0	0	0	0	0	0	0	0	0	0	0	0	0	0	0	0	0	0	0	0	367,803	0	1,394,855	
	Beans (dry)	650	0	0	427	1,527	93	1,047	267	511	0	0	1,786	6,526	21,638,686	10,959,560	91,257,674	33,377,881	1,444,570	6,839,031	6,707,059	26,246,100	1,993,713	17,315,290	52,618,717	
	Beans (green)	0	0	0	0	35	0	0	49	354	0	0	0	0	116,617	10,183	1,168,278	0	0	501,595	0	0	114,103	0	1,130,575	
	Carrots	0	0	0	0	0	0	0	0	0	0	0	0	11	0	914,286	1,297,948	932,610	644,315	63,310,513	0	0	43,796	61,731,127	14,196,602	
	Cherries	16	0	0	262	12	371	0	112	546	0	0	4	0	41,121,034	3,317,228	4,657,257	139,558	686,028	13,718,157	921,809	4,426,688	4,032,081	3,006,566	6,792,413	
	DECIDUOUS FRUITS AND NUTS	0	0	0	0	0	2,155	23	0	266	0	0	0	0	6,739,158	7,385,123	107,820	623,297	0	0	191,639	0	0	0	0	
	Flowers, nursery & Christmas tree farms	126	4	41	4	476	105	521	100	74	164	0	56	603	4,253,221	11,278,052	1,331,399	59,793	2,540,865	1,423,686	0	2,392,425	2,676,476	1,320,614	22,386,152	
	Grapefruit	0	0	0	0	0	0	0	0	4	0	0	0	0	0	11,760	181,956	0	0	562,887	0	0	1,259,781	78,823	6,193,756	
	Lemons	0	0	0	0	0	0	0	0	0	0	0	0	0	0	0	170,137	0	0	12,198,369	0	0	5,944,591	1,282,775	23,864,907	
	Miscellaneous subtropical fruits	34	0	0	0	33	0	9	0	0	2	0	0	24	0	0	53,513	0	0	2,631,145	0	0	31,866	312,470	0	309,529
	Onions and garlic	35	0	0	5	677	0	57	16	101	0	0	483	77	1,981,664	2,204,506	10,323,710	1,883,829	3,173,251	35,149,918	478,034	118,471,319	659,752	9,920,746	4,549,926	
	Oranges	106	0	9	0	185	17	0	0	0	0	0	354	48	0	352,536	2,741,453	0	19,931,980	119,355,657	0	2,130,136	205,452,574	8,538,002	463,394,950	
	Peaches and nectarines	71	0	19	54	148	6,614	170	1	197	68	0	8	13,951	3,841,091	66,853,127	6,225,009	398,326	12,141,835	16,047,428	0	60,125,677	241,282,390	3,845,826	16,526,619	
	Pears	6	0	1	7,095	35	1,639	195	141	191	0	0	16	143	2,171,635	144,607	0	667,633	587,079	0	0	16,252	4,180,226	0	1,859,274	
	Strawberries	7	71	49	6	28	59	119	36	19	0	0	197	35	172,393	4,547,540	24,134	174,557	64,779	27,129	0	20,264	270,538	0	173,856	
	TRUCK, NURSERY AND BERRY CROPS	0	0	0	0	0	31	0	0	68	0	0	0	0	1,980,334	476,709	97,365	1,081,341	0	0	0	0	0	0	0	
	Walnuts	30,756	0	3,463	88	19,583	20,207	3,274	1,157	1,288	269	0	8,898	30,896	121,303,692	110,591,390	41,750,162	17,009,922	6,898,010	5,457,250	1,787,073	59,170,249	11,372,777	0	143,091,575	
Sub-total	58,465	98	3,581	8,894	30,151	33,598	5,572	2,040	7,156	526	745	46,535	82,915	233,652,213	1,079,405,461	325,324,845	70,322,909	314,414,738	391,729,427	19,679,399	541,668,761	578,296,200	422,190,846	1,129,540,011		
Moderately Sensitive (MS)	Alfalfa & alfalfa mixtures	5,185	0	771	27,713	52,955	945	6,039	1,439	4,013	0	124	22,547	4,991	51,658,985	271,130,675	319,976,375	175,797,141	154,252,004	184,483,528	4,221,285	426,695,333	51,478,363	256,952,756	468,258,416	
	Broccoli	0	1	2	3	4	5	6	7	8	9	10	11	12	9,877	340,031	1,640,111	0	0	327,043	0	3,228,419	82,547	253,132	4,206,003	
	Cabbage	0	0	0	0	0	0	0	0	6	0	0	0	0	409,909	127,776	0	0	0	0	0	0	0	0	208,017	
	Cauliflower	0	0	0	0	0	0	0	0	0	0	0	0	0	0	0	1,151,942	0	0	0	0	484,972	0	47,393	2,335,532	
	Celery	0	0	0	0	0	0	0	0	0	0	0	0	0	0	77,175	0	0	0	0	0	0	0	0	0	
	Clover native pasture	15	0	0	165	112	130	535	1,213	0	0	0	1,575	0	527,873	822,234	0	0	50,309	0	0	456,795	6,805	0	0	
	Cole crops (when breakdown is not needed)	0	0	0	0	8	0	0	0	0	0	0	0	6	0	0	127,329	82,188	0	0	0	0	0	0	476,997	
	Corn (field & sweet)	3,179	0	9	31,216	8,722	803	7,632	8,052	9,540	0	0	14,667	10,246	56,940,176	481,605,933	108,259,749	221,115,345	78,595,870	65,217,947	1,002,685	212,724,110	43,501,892	39,296,270	465,148,667	
	Eucalyptus	9,133	0	0	0	2	71	33	11	0	23	0	0	18	140,761	667,504	190,585	202,272	1,083,701	243,548	0	901,982	1,409,940	1,093,569	614,039	
	FIELD CROPS	0	0	1	0	0	220	62	0	1,305	0	0	0	0	4,623,549	1,468,282	0	4,226,840	0	0	0	0	0	0	0	
	Flax	30	0	0	0	0	0	0	0	0	0	0	0	0	0	0	0	0	0	0	0	0	0	81,259	0	
	Lettuce (all types)	0	0	2	0	0	0	0	0	0	0	0	7	0	0	2,518,682	526,609	0	0	2,210,225	0	3,505,536	574,586	637,049	124,678	
	Melons, squash, and cucumbers (all types)	773	0	66	389	2,077	339	355	439	229	0	0	3,234	7,682	6,222,741	6,850,967	86,480,599	21,017,748	1,569,045	15,887,960	732,699	92,814,530	2,993,212	2,840,886	3,298,103	
	Misc. grasses (normally grown for seed)	0	0	0	857	1,696	0	0	0	0	0	0	185	144	9,218	0	0	0	0	0	0	1,432,587	385,184	0	0	
	Peas	0	0	0	0	5	0	0	0	0	0	0	0	0	0	0	0	0	0	0	0	0	0	0	0	
	Peppers (chili, bell, etc.)	0	0	0	0	839	0	3	156	315	0	0	489	0	9,082,145	1,368,187	1,369,871	1,572,762	227,029	16,522,132	0	5,346,753	758,134	479,357	943,561	
	Plums	0	0	0	0	79	437	0	0	20	0	0	0	0	596,513	2,550,555	2,228,007	192,288	9,648,520	3,067,342	0	26,033,710	93,311,198	503,426	64,543,488	
	Potatoes	0	0	0	673	24	0	0	0	0	0	0	43	0	0	0	0	14,545,545	0	14,642,769	0	83,182	64,888	0	243,504	
	Prunes	20,212	0	451	0	2,784	16,495	1,330	0	0	686	0	3,173	27,253	83,724	5,671,567	1,091,448	0	5,059,466	0	0	5,094,387	3,028,465	0	15,999,175	
	Raisin grapes	0	0	0	0	0	0	0	0	0	0	0	0	0	114,304	0	0	0	0	0	0	0	0	0	0	
	RICE	962	0	0	0	0	40,330	20,021	0	0	0	0	0	0	11,762,775	12,422,342	0	54,403	0	0	0	0	0	0	0	
	Spinach	0	0	0	0	0	0	0	0	0	0	0	0	0	0	0	503,794	0	0	0	0	0	0	0	0	
	Sweet potatoes	0	0	0	0	0	0	0	0	0	0	0	0	0	0	36,664,696	46,703	0	0	2,161,659	0	1,040,633	86,083	190,101	485,883	
	Table grapes	0	0	0	0	0	0	0	0	0	0	0	192	9	0	0	0	0	0	0	0	123,345	0	0	0	
Tomatoes	10	0	0	6,979	30,687	17	1,726	917	4,548	0	0	14,551	6,900	59,738,736	72,176,677	193,574,193	91,456,153	7,852,665	35,453,307	1,226,541	412,924,311	2,722,150	58,585,903	9,048,516		
Turf farms	0	0	11	141	602	0	85	187	0	0	0	0	0	0	3,241,544	2,518,528	4,485,988	0	2,148,067	0	15,644	1,659,017	0	0		
Wine grapes	21	80	73	0	102	0	0	0	0	0	0	0	0	0	0	0	0	0	0	0	0	0	0	0		
Sub-total	39,521	80	1,384	68,13																						

Table 3 (Continued) Summary of Total Acreage of Crops by CSZs

Crops and Sensitivity Thresholds		Crop Sensitivity Zones (CSZs)																							
		4	7	8	10	11	15	19	31	44	60	61	201	202	31	35	41	44	45	57	75	511	512	581	582
Moderately Tolerant (MT)	Artichokes	0	0	0	21	3	0	0	0	0	0	0	2	0	18,781	572,150	0	0	0	0	0	25,673	0	24,631	
	Figs	103	0	0	38	10	15	0	0	27	0	0	0	0	14,885,217	0	0	38,759,492	0	0	73,570	13,513,702	1,857,030	0	
	Grain sorghum	0	0	0	1,312	178	0	84	0	0	0	17	455	839	602,385	1,855,866	0	1,808,404	19,132	3,028,534	0	2,038,707	59,232	10,602,257	13,711,619
	Kiwis	136	0	396	27	0	586	13	0	0	0	0	39	843	86,290	813,817	0	0	120,254	0	0	1,096,341	2,397,347	0	6,334,720
	Miscellaneous and mixed grain and hay	349	0	118	468	450	183	1,290	181	500	449	0	714	489	1,549,823	1,051,606	370,127	845,538	0	0	4,082,547	1,048,335	0	0	0
	Olives	8,997	0	588	0	534	1,849	205	286	0	0	0	3,382	610	9,422	345,709	0	0	7,453,092	0	0	1,322,413	10,700,402	1,707,302	72,827,524
	Pistachios	639	0	41	0	226	57	49	30	58	0	0	839	326	279,238	21,676,571	1,098,188	125,859	93,272,471	14,582,538	0	52,605,393	2,659,908	219,311,579	99,898,280
	Safflower	444	0	28	14,204	6,813	91	1,627	838	3,039	0	0	3,770	4,769	913,138	0	3,447,617	73,395,778	284,205	3,921,686	975,571	17,933,093	34,884	1,367,194	4,592,052
	Sudan	39	0	15	2,217	3,185	305	588	4,039	385	0	0	486	1,066	879,471	12,831,845	19,010,852	2,968,955	8,592,797	22,598,793	0	23,548,460	5,088,478	11,709,900	21,575,104
	Sunflowers	670	0	0	336	7,912	0	636	0	0	0	8	8,983	3,840	0	0	0	6,354,404	0	0	0	74,566	0	0	134,388
Wheat	68	0	14	1,736	10,859	0	0	0	0	208	0	2,180	418	0	9,281,507	2,770,220	0	176,542	0	0	0	93,673	0	0	
	Sub-total	11,446	0	1,201	20,360	30,169	3,086	4,491	5,374	4,008	657	20,848	13,203	4,319,767	62,760,919	27,269,153	85,498,938	148,677,985	44,131,552	5,058,118	99,740,879	34,573,299	246,555,262	219,098,318	
Tolerant (T)	Asparagus	6	0	0	987	138	0	0	9	1,481	0	0	464	3,440,973	553,296	9,720,293	87,376,208	0	1,500,370	0	3,088,473	0	0	0	
	Barley	71	0	0	76	0	0	0	0	0	0	0	315	0	6,147,868	0	0	0	0	0	0	0	0	0	201,804
	Cotton	0	0	0	0	0	0	0	0	0	0	0	1,987	1,517	0	67,362,589	411,565,877	0	105,528,087	219,962,102	0	1,218,425,668	23,064,775	576,849,416	345,454,462
	Dates	0	0	0	1	6	0	0	0	0	0	0	0	0	0	0	0	0	0	0	0	0	0	0	0
	Jojoba	0	0	0	0	0	0	0	0	0	0	0	0	0	0	0	0	0	0	594,705	0	46,245	19,137	0	0
	Mixed pasture	28,533	1,845	12,064	31,783	9,162	12,981	17,865	13,002	4,201	168	64	10,238	6,391	88,570,519	385,360,472	47,400,843	16,455,444	41,556,535	12,046,122	822,927	18,807,337	37,812,919	9,725,198	21,275,391
	Native pasture	71	8,220	106	1,977	586	168	286	675	2,875	2	0	26	218	667,214	136,968	62,420	334,758	1,231,112	146,762	54,616	3,540,719	8,044,036	0	2,001,835
	Oats	19	0	20	0	0	0	99	0	0	0	0	161	0	0	3,875,009	829,257	0	595,544	0	0	0	217,829	0	0
	Sugar beets	0	0	0	1,577	0	0	812	383	250	0	0	10	29	9,308,668	9,883,741	35,046,079	16,798,791	2,512,715	630,352	503,413	52,989,850	59,342	4,963,438	17,339,803
	Sub-total	28,700	10,065	12,189	36,401	9,893	13,150	19,062	14,068	8,806	170	64	12,737	8,619	101,987,374	473,319,943	504,624,768	120,965,201	151,423,993	234,880,412	1,380,956	1,296,898,292	69,218,037	591,538,052	386,273,294
Not Defined	Castor beans	0	0	0	0	0	0	0	0	0	0	0	7	0	0	0	0	0	0	0	0	0	0	0	0
	Hops	0	0	0	0	0	0	0	0	0	0	0	0	0	0	0	0	0	0	0	0	0	235,503	0	0
	Miscellaneous field	38	0	8	0	351	27	0	6	0	0	0	242	211	0	0	0	0	33,843	0	0	1,416,446	0	0	367,013
	Miscellaneous truck	59	4	0	14	256	12	24	0	74	11	0	55	206	2,055,164	3,039,182	6,201,379	140,620	40,121	2,744,080	0	2,785,418	9,473,604	561,177	2,040,040
	Sub-total	97	4	8	14	607	38	24	6	74	11	0	305	416	2,055,164	3,039,182	6,201,379	140,620	73,964	2,744,080	0	4,201,864	9,709,107	561,177	2,407,053
Grand Total		138,230	10,247	18,364	133,801	171,512	109,661	66,971	33,903	40,020	2,073	957	141,088	162,403	543,935,804	2,518,230,333	1,583,105,987	811,676,341	872,929,287	1,015,850,998	33,301,683	3,135,416,023	893,940,366	1,621,725,181	2,773,253,255

Table 4 Crop Salinity Thresholds

Crop	Threshold Salinity (A)	Slope (B)	Rating	Crop	Threshold Salinity (A)	Slope (B)	Rating	Crop	Threshold Salinity (A)	Slope (B)	Rating	Crop	Threshold Salinity (A)	Slope (B)	Rating	Crop	Threshold Salinity (A)	Slope (B)	Rating
Artichoke	6.1	11.5	MT	Turnip	0.9	9	MS	Pummelo	--	--	S	Bermuda	6.9	6.4	T	Rescue grass	--	--	MT
Asparagus	4.1	2	T	Turnip, greens	3.3	4.3	MT	Raspberry	--	--	S	Bluestem,	--	--	MS	Rhodes grass	--	--	MT
Bean, Common	1	19	S	Watermelon			MS	Rose apple	--	--	S	Brome,	--	--	MT	Rye (forage)	7.6	4.9	T
Bean, Mung	1.8	21	S	Almond	1.5	19	S	Sapote, white	--	--	S	Brome, smooth	--	--	MS	Ryegrass, Italian	--	--	MT
Beet, red	4	9	MT	Apple	--	--	S	Tangerine	--	--	S	Buffelgrass	--	--	MS	Ryegrass, perennial	5.6	7.6	MT
Broccoli	2.8	9.2	MS	Apricot	1.6	24	S	Barley	8	5	T	Burnet	--	--	MS	Salt grass, desert	--	--	T
Brussels sprouts			MS	Avocado	--	--	S	Bean, Common	1	19	S	Canary grass,	--	--	MT	Sesbania	2.3	7	MS
Cabbage	1.8	9.7	MS	Blackberry	1.5	22	S	Broad bean	1.6	9.6	MS	Clover alsike	1.5	12	MS	Sirato	--	--	MS
Carrot	1	14	S	Boysenberry	1.5	22	S	Canola	10.4	13.5	T	Clover, Berseem	1.5	5.7	MS	Sphaerophysa	2.2	7	MS
Cauliflower			MS	Castorbean	--	--	MS	Corn	1.7	12	MS	Clover, Hubam			MT	Sudan grass	2.8	4.3	MT
Celery	1.8	6.2	MS	Cherimoya	--	--	S	Cotton	7.7	5.2	T	Clover, ladino	1.5	12	MS	Timothy	--	--	--
Corn, sweet	1.7	12	MS	Cherry, sweet	--	--	S	Cowpea	4.9	12	MT	Clover, red	1.5	12	MS	Trefoil, big	2.3	19	MS
Cowpea	4.9	12	MT	Cherry, sand	--	--	S	Crambe	2	6.5	MS	Clover, strawberry	1.5	12	MS	Trefoil, narrowleaf bird's	5	10	MT
Cucumber	2.5	13	MS	Currant	--	--	S	Flax	1.7	12	MS	Clover, sweet	--	--	MT	Trefoil, broadleaf bird's foot	--	--	MT
Eggplant	1.1	6.9	MS	Date palm	4	3.6	T	Guar	8.8	17	T	Clover, white	--	--	MS	Vetch,	3	11	MS
Garlic	3.9	14.3	MS	Fig	--	--	MT	Kenaf	--	--	T	Corn, forage	1.8	7.4	MS	Wheat (forage)	4.5	2.6	MT
Kale	--	--	MS	Gooseberry	--	--	S	Millet, channel	--	--	T	Cowpea (forage)	2.5	11	MS	Wheat, durum	2.1	2.5	MT
Kohlrabi	--	--	MS	Grape	1.5	9.6	MS	Oat	--	--	T	Dallis grass	--	--	MS	Wheat grass, standard crested	3.5	4	MT
Lettuce	1.3	13	MS	Grapefruit	1.2	13.5	S	Peanut	3.2	29	MS	Dhaincha	--	--	MT	Wheat grass, fairway crested	7.5	6.9	T
Muskmelon	1	8.4	MS	Guayule	15	13	T	Rice, paddy (field water)	1.9	9.1	MS	Fescue, tall	3.9	5.3	MT	Wheat grass, intermediate	--	--	MT
Okra	--	--	S	Jojoba	--	--	T	Rye	11.4	10.8	T	Fescue, meadow	--	--	MT	Wheat grass, slender	--	--	MT
Onion	1.2	16	S	Jujube	--	--	MT	Safflower	--	--	MT	Foxtail, meadow	1.5	9.6	MS	Wheat grass, tall	7.5	4.2	T
Onion, Seed	1	8	MS	Lemon	1.5	12.8	S	Sesame	--	--	S	Glycine	--	--	MS	Wheat grass, western	--	--	MT
Parsnip	--	--	S	Lime	--	--	S	Sorghum	6.8	16	MT	Gramma, blue	--	--	MS	Wild rye, Altai	--	--	T
Pea	3.4	10.6	MS	Loquat	--	--	S	Soybean	5	20	MT	Guinea grass	--	--	MT	Wild rye, beardless	2.7	6	MT
Pepper	1.5	14	MS	Mango	--	--	S	Sugar beet	7	5.9	T	Harding grass	4.6	7.6	MT	Wild rye, Canadian	--	--	MT
Potato	1.7	12	MS	Olive	4	12	MT	Sugarcane	1.7	5.9	MS	Kallar grass	--	--	T	Wild rye, Russian	--	--	T
Purslane	6.3	9.6	MT	Orange	1.3	13.1	S	Sunflower	4.8	5	MT	Kikuyagrass	--	--	T	Other	--	--	ND
Pumpkin	--	--	MS	Papaya	--	--	MT	Tricale	6.1	2.5	T	Love grass	2	8.4	MS	Walnut	--	--	S
Radish	1.2	13	MS	Passion fruit	--	--	S	Wheat	6	7.1	MT	Milkvetch, cicer	--	--	MS	Kiwi	--	--	MT
Spinach	2	7.6	MS	Peach	1.7	21	S	Wheat (semi-	8.6	3	T	Millet, Foxtail	--	--	MS	Eucalyptus	--	--	MS
Squash, scallop	3.2	16	MS	Pear	--	--	S	Wheat, durum	5.9	3.8	T	Oatgrass, tall	--	--	MS	Nursery	--	--	S
Squash, zucchini	4.9	10.5	MT	Persimmon	--	--	S	Alfalfa	2	7.3	MS	Oat (forage)	--	--	T	Mixed	--	--	S
Strawberry	1	33	S	Pineapple	--	--	MT	Alkali grass,	--	--	T	Orchard grass	1.5	6.2	MS				
Sweet potato	1.5	11	MS	Pistacio	--	--	MT	Alkali sacaton	--	--	T	Panicgrass, blue	--	--	MT				
Tomato	2.5	9.9	MS	Plum	2.6	31	MS	Barley (forage)	6	7.1	MT	Paspalum, Polo	--	--	T				
Tomato, cherry	1.7	9.1	MS	Pomegranate	--	--	MT	Bentgrass	--	--	MS	Rape	--	--	MT				

4. Other CSZ Properties Related to Crop Sensitivity

The boundaries of the CSZs were overlaid on the GIS data for soil and agroclimatic conditions, applied water quality, and management to illustrate the overall spatial variations and any apparent trends, either between or within the CSZs. These data can later be employed to inform Hoffman or similar analyses, establishing quantitative relationships between land cover and irrigation water quality needed.

4.1 CSZ Properties Shown on Maps and in Summary Tables

GIS maps for soils, applied water quality, and climate were developed within the CSZ boundaries to illustrate the spatial distribution of properties related to salt sensitivity within each CSZ and across the CSZs. Summary data tables for soils properties are also prepared.

4.1.1 Soil Data

Soil properties were mapped and summarized within each CSZ. Specific soil properties were selected due to their significance in Hoffman or similar analyses; similar maps of other properties can readily be drawn from the same dataset, but is beyond the scope of the current work.

Figures 12 through **16b** show the distribution of soil EC, SAR, drainage classes, depth to water table, and available water supply at two soil depth intervals. The shallower depth interval might better related to shallow rooted or establishing crops, whereas the deeper interval would better express the degree of water storage that can be accessed by established, especially deep-rooted crops. **Tables 5** and **6** present these data in summary tables.

ECe

The spatial distribution of soil EC (ECe) data (expressed as decisiemens per meter [dS/m] at 25 degrees C) is shown in **Figure 12**. ECe and drainage class are indicative of the extent to which it might be challenging to maintain a soil at levels of salinity suitable for sensitive crop cultivation. Soils with greater challenge might generally be associated with less sensitive crops, but not exclusively so. When other factors favor a choice to plant a sensitive crop, a farmer may be willing to invest more resources in achieving and maintaining favorable root zone salinity levels.

SAR

The spatial distribution of SAR is shown in **Figure 13**. SAR is a measure of the amount of sodium (Na) relative to calcium (Ca) and magnesium (Mg) in soil water extracted from saturated soil paste. SAR is used as an index of determining the potential sodium hazard. Water infiltration is affected by both the salinity and the SAR of the soil and applied water. Soils that have SAR values of 13 or more may be characterized by an increased dispersion of organic matter and clay particles, reduced saturated hydraulic conductivity and aeration, and a general degradation of soil structure. Based on a visual comparison of the EC map in **Figure 12** and SAR map in **Figure 13**,

the spatial trends of the two soil properties appear to be generally consistent, both maps showing large EC and SAR values in the same general areas.

Drainage Classes

The drainage classes are mapped in **Figure 14** and tabulated in **Table 4**. The NRCS (1993) employs seven classes of natural soil drainage: excessively drained, somewhat excessively drained, well drained, moderately well drained, somewhat poorly drained, poorly drained, and very poorly drained. The description of these classes can be found in NRCS (1993), Chapter 3. Poorly drained areas (shown as very poorly drained, poorly drained, or somewhat poorly drained) tend to correspond to areas with higher EC and SAR. Under poorly drained conditions, crop productivity may be limited unless soil is artificially drained.

Depth to Water Table

The depth to water table is shown in **Figure 15**. The depth to water table affects nutrient and crop management, and can be related to drainage.

AWS

Figures 16a and **16b** show the distribution of AWS in the upper 8 and 40 inches of soil, respectively. AWS is reported as water depth (in cm) for the specified depth of the soil. Available water supply in the upper 8 inches indicates the soil's capacity to provide adequate water to a young perennial, or shallow-rooted annual crop. Available water supply in the upper 40 inches indicates the soil's capacity to provide adequate water to an established, especially perennial, growing crop. The greater these values, the better buffered the crop is against drought stress due to intermittent drying. Drought stress is indirectly related to salinity, since one of the effects of salinity is to make it more difficult for plants to take up water.

4.1.2 Source and Quality of Applied Water

Applied surface water quality (TDS) data were mapped within the CSZs (see **Figures 17** through **19**). **Figure 17** shows the TDS of the most recent measurements from agricultural and non-agricultural wells mapped throughout the region. The majority of the agricultural wells identified in the dataset are located in the northern portion of Region 5 based on the DWR dataset. As described earlier, the RWQCB WDR Dairy Data includes TDS from monitoring wells while the NWQMC dataset contains groundwater TDS without the well types identified. It may be possible to infer groundwater quality in the absence of well types; thus, TDS data without well types were also included. Groundwater TDS is typically below 400 mg/L at most locations, with elevated salinity observed mainly within Fresno and Merced counties. Note that these data capture only the groundwater component of applied water. In **Figure 18**, applied water quality for the Kings River Area is shown. Again, these estimates are for the flow-weighted averages of applied water quality, in this case at a very fine scale of one square mile. **Figure 19** shows the TDS of applied water quality within the WARMF domains. These concentrations are flow-weighted averages of applied surface water and groundwater. Note that for some areas, WARMF predicts no applied water, so that no applied water salinity is shown. **Figure 19a** shows the difference between the applied water salinity (**Figure 19**) and preliminary estimate of crop requirement (**Figure 10**) to illustrate where water quality appears to be providing appropriate quality for the crop needs. Positive values indicate salinity of applied water exceeds preliminary estimate of crop sensitivity

threshold. **Figure 20** shows the distribution of applied water quality acreage, based on the same WARMF dataset. Please note these are average applied water quality estimates for the entire WARMF catchments as such extreme values that may exist in field were not captured.

4.1.4 Climate Data

Climatic indices (estimated ETo, maximum EP, and AW [to alfalfa]) for average conditions for the CSZs are shown in **Figures 21 through 23**, based on the DWR land use data. Climate indices for the CSZs were also prepared for the drought- and median-year scenarios as shown in **Figures 24 through 29**. The most significant for the CST are probably data for ETo (as an index of the strength of evaporative demand) and EP (as an index of the amount of natural reclamation that might occur). These are based on historical data. The extent to which future conditions are reflected will depend on the pace and distribution of climate change, as it affects these parameters in these locales.

4.1.5 Management Factors

Irrigation management factors for the source of irrigation water and the method of irrigation are shown in **Figures 30 and 31**, respectively, based on the DWR land use survey data. The method of irrigation can affect the influence of a given level of applied water salinity on the crop, and should therefore be taken into account. For example, drip and microspray irrigation can maintain relatively low levels of salinity in soil volumes that are repeatedly wetted, where roots can reliably find moisture. Where such irrigation methods are the norm for SMCs, applied water salinity targets should not ignore their influence. That is, target salinity concentrations should be higher.

The source of irrigation water is a helpful clue in identifying the water bodies that may require protection so that the crop itself is protected from water quality degradation. As previously discussed, where groundwater is a major or the predominant source, subsurface hydrography will be key to knowing where sensitive recharge zones are. Where this is the case, subsurface hydrography is anticipated to be evaluated on a more site-specific basis, due to the lack of broad-scale characterization.

Table 5 Summary of Soils Data for Electrical Conductivity, Sodium Adsorption Ratio, and Available Water Supply by CSZs

Crop Sensitivity Zones (CSZs)	Average EC (dS/cm)	Average SAR	Average AWS 0-25 cm Soil Depth (cm)	Average AWS 0-100 cm Soil Depth (cm)
4	0.1	0.007	3.1	9.2
7	0.002	-	2.9	9.4
8	0.011	-	2.9	9.5
10	1.3	1.2	3.7	14
11	1.4	2.0	3.6	13
15	0.2	0.1	2.9	9.7
19	0.2	0.005	2.9	8.6
31	0.4	0.004	2.9	8.2
35	1.3	0.9	2.9	9.4
41	2.8	5.5	3.3	12
44	0.9	0.3	4.3	16
45	4.6	2.8	2.8	9.1
57	2.4	7.6	3.2	11
60	0.1	-	2.8	7.7
61	0.4	0.2	3.7	11
75	1.1	0.5	3.8	15
201	1.1	1.1	3.4	11
202	0.6	0.4	3.4	11
511	4.8	4.4	2.4	8.8
512	0.5	0.2	2.9	10
581	3.1	8.6	3.0	11
582	1.2	3.7	3.0	11

Table 6 Summary of Drainage Class by CSZs – Acreage Percentage

Crop Sensitivity Zones (CSZs)	Excessively Drained	Somewhat Excessively Drained	Well Drained	Moderately Well Drained	Somewhat Poorly Drained	Poorly Drained	Very Poorly Drained
4	3%	6%	75%	7%	5%	3%	0%
7	7%	8%	76%	7%	2%	0%	0%
8	8%	6%	73%	13%	1%	0%	0%
10	0%	1%	6%	8%	32%	37%	15%
11	6%	0%	63%	5%	14%	12%	0%
15	2%	13%	34%	27%	21%	2%	0%
19	0%	4%	39%	43%	11%	3%	0%
31	0%	2%	42%	46%	8%	0%	0%
35	3%	8%	51%	22%	11%	4%	0%
41	0%	1%	43%	3%	7%	35%	11%
44	0%	0%	6%	4%	15%	28%	47%
45	1%	5%	44%	31%	12%	7%	0%
57	0%	12%	78%	5%	5%	0%	0%
60	2%	3%	95%	0%	0%	0%	0%
61	0%	1%	85%	5%	6%	3%	0%
75	0%	0%	86%	14%	0%	0%	0%
201	2%	4%	63%	9%	10%	12%	0%
202	2%	1%	18%	28%	29%	21%	0%
511	1%	17%	40%	4%	32%	4%	2%
512	1%	21%	52%	12%	9%	5%	0%
581	0%	5%	77%	6%	8%	3%	0%
582	0%	6%	66%	21%	5%	1%	0%

5. Conclusions and Recommendations

A process for employing crop sensitivity, hydrographic, hydrologic, other environmental (soil and climate), and management data to inform AGR water quality objectives was developed. Crop sensitivity zones were developed in detail, as were numerous themes of spatial crop, soil, climatic, water quality, hydrographic, and water management data within these zones. It is anticipated that these data will serve as inputs to analyses scoped as Task 5.3 of this project, work that has yet to be fully authorized or completed.

Water quality targets that would be protective of sensitive crops might be defined within these CSZs, with the potential to focus on recharge areas and waters that supply irrigation to sensitive crops. Integrated consideration of cropping patterns, crop sensitivity, water quality, and irrigation source water recharge areas is the most promising approach from the perspective of regulatory application of the process.

These initial CSZ delineations are a reasonable starting point to begin investigating the connections between crop sensitivity calculations and potential AGR standards. The hydrographic basis should facilitate evaluations of connections between drainage and “downstream” (meaning waters influenced by the discharge in question) irrigation supplies.

A number of issues and questions related to these types of calculations and their appropriate use in a regulatory setting remain to be addressed (Dickey, 2012; Letey et al., 2011). Consultation with a suitable group of experts is anticipated as part of the CV-SALTS process. This should yield helpful guidance to subsequent work.

It is clear from the crop distribution maps that sensitive major crops tend to be rather localized within the initial CSZs. This would imply that protection of these crops might best be focused onto waters tapped to irrigate these areas, and might not apply in the same manner to waters that are not routed to such irrigation supplies. Careful hydrographic and hydrologic analysis will be needed at this point. AGR objectives may vary within a CSZ, depending on hydrographic connections between recharge and end-use areas for waters applied to sensitive crops. This level of refinement is justified on the one hand by the importance of protecting AGR beneficial uses, and on the other by the constraints that AGR objectives may impose on dischargers. The snapshot of crop distribution provided is extremely useful and is probably a good indication of where sensitive crops tend to be grown over the long term. However, these patterns can and do shift over time, and it will become necessary to grapple with how to locate areas likely to host sensitive crops in the long term.

CV-SALTS has provided initial policy direction relative to the definition of drought years, major crops, and acceptable yield reductions due to water quality. With the completion of Task 5.3, it will be possible to evaluate how these thresholds affect applied water quality targets that may serve to inform AGR objectives. It would be useful to include a process step in which this evaluation can be performed, and implications for policy direction on these key parameters

considered. For example, an alternative method of applying the major crop threshold is provided in **Attachment B**. The need for such an alternative will be more evident once it can be considered in the light of the results of Task 5.3.

Work such as that completed with the KRCD is extremely useful in ensuring that real water supply operations and the best local knowledge are incorporated into CV-SALTS analyses and decisions. Relatively brief, efficient communication allowed substantial refinement of applied water quality inputs. This will improve all subsequent analysis for this area. The same sort of consultation would be indispensable in refining information about applied water routing, to ensure that more stringent AGR standards are applied in areas that need this protection, and so that less stringent standards are developed for less sensitive areas. The data request process and activities log (**Attachment A**) show that DWR Northern District staff are in the process of compiling useful data for their region, and will be coordinating with staff from other Central Valley districts to do the same.

6. References

California Department of Water Resources (DWR). 2013. CIMIS Data.

Central Valley Regional Water Quality Control Board (CVRWQCB) 1992. Staff Report Inland Surface Waters Plan (ISWP). September 1992.

Dickey, J. 2012. Potential influence of crop sensitivity and leaching tools and assumptions on target salinity levels. Memo to CV-SALTS Coalition.

Hanson, B.R., S.R. Grattan, A. Fulton. 2006. Irrigation and Water Resources Farm Advisor Agricultural Salinity and Drainage. DANR Publication 3375, University of California, Davis.

Hoffman, G. J. 2010. Salt Tolerance of Crops in the Southern Sacramento-San Joaquin Delta. Final Report. January 5, 2010. Prepared for California Environmental Protection Agency State Water Resources Control Board Division of Water Rights.

Kennedy/Jenks Consultants, 2010. Technical Memorandum Task 2 – Phase 1 Basin Plans Data Compilation. Prepared for the San Joaquin Valley Drainage Authority.

Kennedy/Jenks Consultants, 2013a. GIS Technical Services Task #4- Incorporate Additional GIS Map Layers into Existing System. Draft Report. May 2013. Prepared for the San Joaquin Valley Drainage Authority.

Kennedy/Jenks Consultants, 2013b. GIS Technical Services Task #3- Addressing Identified data Gaps in Existing Beneficial Use Objectives Study (BUOS) Final Report. April 2013. Prepared for the San Joaquin Valley Drainage Authority.

Kings River Conservation District. 2013. Personal communication from Eric Osterling.

Letey, J., G.J. Hoffman, J.W. Hopmans, S.R. Grattan, D. Suarez, D.L. Corwin, J.D. Oster, L. Wu, C. Amrhein. 2011. Evaluation of soil salinity leaching requirement guidelines. *Agricultural Water Management*, 98:502-506.

Luhdorff & Scalmanini Consulting Engineers (LSCE). 2003. Monitoring Program Report for Mendota Pool Group. (unknown title).

Maas, E.V. 1990. "Crop salt tolerance." In: *Agricultural Salinity Assessment and Management*, ed. K.K. Tanji, American Society of Civil Engineers Manuals and Reports on Engineering Practices No. 71. Ayers, R.S. and D.W. Westcot. 1985. "Quality water for Agriculture." *Irrigation and Drainage Paper 29*. FAO, United Nations, Rome, 174 pp.

NRCS Soil Survey Division Staff. *Soil Survey Manual*. 1993.

<http://soils.usda.gov/technical/manual/>.

Page, R. W., and R. A. LeBlanc. 1969. Geology, Hydrology, and Water Quality in the Fresno Area, California. Open-File Report, Menlo Park, California.

Attachment A – Irrigation Data Request and Tabulation of Process and Responses through July 9, 2013

Attachment B – Major Crop Designations for Each CSZ

Agricultural Zone Map Project

No.	Date Received	Comment Source	Deliverable	Comment	Response
1	09/03/13	Nigel Quinn	Draft Task 5.1/5.2 Report	<p>General comment (closely related comments: 2, 24) - My major concern is that I think the CSZs are way too large and it makes little sense to me to make them equivalent to the Basin Hydrologic Units (which are fairly meaningless for water quality and management purposes). It seems like a wasted opportunity to develop a unit of analysis that would finally engage our stakeholders. I would have used water districts as the basic CSZ unit with major zones within each District that receive a differentiated water supply as the CSZ sub-unit. Doing this would have established a direct connection with our stakeholder population and allowed scope for CVSALTS involvement. If others agree - this might be a good point to assess a way forward. It might also help guide the SSALTS delineation effort.</p>	<p>The LWA team agrees that protection of AGR BU without inflicting substantial and needless economic harm in many cases requires that smaller spatial units must be analyzed. The team has attempted to describe methodology to subdivide CSZs to meet this need. With respect to this project, Task 5.2 was expressly scoped to define large zones, primarily because Task 5.3 entails a Hoffman-like analysis of each zone, and turning the crank on such an analysis, when it is done too many times, enlarges that work beyond what CV-SALTS wished to commit to at the time. The workplan states, "Up to 25 CSZs will be identified. Crop mixture summaries will be developed, and major crops identified within each CSZ. " This precludes use of smaller zones, and therefore also precludes beginning with water districts as a unit of analysis. Until discussion of these comments, after the third draft of the report was submitted, these zones were always conceived to cover R5 comprehensively, thus averaging about 1/25 of the R5 area in size, and their equation with water districts had never been mentioned. It is therefore impractical, having performed the work, to re-do the work completely and at a far greater level of spatial refinement. Work at this spatial scale and level of effort were expressly not envisioned in the workplan. The patchy distribution of sensitive crops that became evident during performance of 5.1 nevertheless informed us that these large zones would in many cases need to be subdivided later on to delineate zones in which AGR-related salinity discharge limits could appropriately be determined and incorporated into regulatory programs. The approach we took was to develop and describe a methodology to focus on areas that have the greatest influence on sensitive crop receptors. This process, when implemented, often would result in substantially smaller subunits that should likely align with the commenter's observations. When working at this finer scale, there is nothing to prevent water and drainage district boundaries and operations to be taken into account, and in many cases, they probably should be.</p>

Agricultural Zone Map Project

No.	Date Received	Comment Source	Deliverable	Comment	Response
2	09/03/13	Nigel Quinn	Draft Task 5.1/5.2 Report	<p>The conceptual basis of the CSZs delineation is well documented – however I think that the equating of the CSZs with the hydrographic units was a mistake. As is stated in the Summary and Conclusions section of the Report:</p> <p><i>Work such as that completed with the KRCD is extremely useful in ensuring that real water supply operations and the best local knowledge are incorporated into CV-SALTS analyses and decisions. Relatively brief, efficient communication allowed substantial refinement of applied water quality inputs. This will improve all subsequent analysis for this area. The same sort of consultation would be indispensable in refining information about applied water routing, to ensure that more stringent AGR standards are applied in areas that need this protection, and so that less stringent standards are for less sensitive areas.</i></p> <p>Had the team chosen water districts as the primary units of analysis and subdivided these into smaller CSZs they would have realized the benefits described above and created a new unit of analysis that is more meaningful. The hydrographic units chosen are very large – of the order of the IAZs and related neither to water quality or to management and as such - aren't that meaningful to Basin stakeholders. On the other hand water quality is significantly affected by political boundaries. Water Districts with superior water rights tend to have better quality water supply since they don't need to resort to groundwater pumping. Other Districts such as Patterson Irrigation District capture surface runoff and redistribute this water supply creating internal zones within the District that have well-defined water quality. These internal zones would have made ideal CSZs – since they are well recognized within each District. Each District also has the power to influence their salinity – for example by changing the blending ratio of various water sources which in turn would affect soil salinity. In the case of Patterson ID the following CSZs could have been recognized: (a) DMC water only; (b) San Joaquin River water only; (c) groundwater only; (d) blended DMC and San Joaquin River water; blended return flow water with River water. Sensitive areas within each of these areas could have been identified. The advantage of this</p>	<p>The points raised regarding the challenges of large-scale units for AGR implementation are valid, and were to some extent recognized by the team. This is why methodology for definition of smaller zones was provided. Please see the response to comment 1 for additional explanation. The methodology involved hydrographic and groundwater recharge zone data for the same reason that the commenter identifies water districts as the ideal unit of implementation: it is the water used by farmers of sensitive crops that must be protected from excessive salinization, and to protect this water, it is necessary to know where it comes from. In final implementation, we envision close work with water districts of the type that is implied. At the R5 scale at which we were obliged to work, it was impossible (and forbidden by the workplan) to engage in the type of district-by-district evaluation that is suggested, however useful and necessary these evaluations may someday prove to be for localized analyses. Fortunately, hydrographic and groundwater basin data provide a means by which areas where irrigation supplies are recharged by discharges can be readily and automatically identified for further investigation. We submit that this was the most reasonable way to address issues such as those raised by the commenter at the scale of R5, within the budgetary constraints of this project.</p>
3				<p>1. Figure 1a is very difficult to follow (hard to read for one thing) and would benefit by improved explanation. Really isn't clear what the color scheme is supposed to do – not sure of the difference between an abbreviated and detailed approach. The idea of a flowchart is good – but only effective if the reader can follow it.</p>	<p>The flow charts are indeed complex and will be moved to 11x17 to make them easier to read. They are also heavily annotated (including explanation of color coding), and discussed thoroughly in the text. An added complication is that the method for subdivision of the large CSZs was developed as part of the work, necessitating a new flow chart. Comments on earlier drafts focused on relationship between the workplan and report, and the second flow chart was added in response, , along with explanation of how it relates to the previous flow chart. We unfortunately did not discover a good way to make these complex process details appear simple.</p>

Agricultural Zone Map Project

No.	Date Received	Comment Source	Deliverable	Comment	Response
4	09/03/13	Nigel Quinn	Draft Task 5.1/5.2 Report	Figure 1b is a bit better and the colors are more meaningful. However still not clear what the beginning and end points are and what the significance of the outcome is. More detailed caption explaining sequence with clearer beginning and end points in the process would help.	Please see response to comment 3.
5	09/03/13	Nigel Quinn	Draft Task 5.1/5.2 Report	Would like to know the disposition of the data compiled for these tasks at the end of this project. What provision is being made to create a resource for CVSALTS stakeholders. Would like to see this addressed early on in the process rather than waiting until the end. After all this is supposed to provide the road map and some of the basic resources for the amended Basin Plan.	Data compiled in 5.1 is available as a geodatabase. It can be downloaded at the K/J ftp site. The link to the K/J ftp site was provided by Richard Meyerhoff when the Draft Task 5.1-5.2 Report was submitted to the Project Committee for review on the 8/18/2013 email.
6	09/03/13	Nigel Quinn	Draft Task 5.1/5.2 Report	Can't make any sense of the colorized hydrologic networks (figures 11a and 11b). What are these supposed to show? Is the color suggestive of a single source of all this water. The crop key below suggests a range of crops – has the hydrologic network information obscured the crop information?	Hydrologic networks are stream channels, streams being defined broadly and including managed irrigation and drainage canals. The coloration shows many dispersed sources feeding to a common, downstream point, where a sensitive crop is located. Where the hydrographic network is shown on a figure, only sensitive crops are shown. This is done to avoid placing too much non-essential information on the map. Both sensitive crops and network are shown because both are essential to the analysis, the crop being the sensitive receptor, and the network being the area in which excessive salinization could affect a downstream receptor after accounting for mixing and dilution.
7	09/03/13	Nigel Quinn	Draft Task 5.1/5.2 Report	What is the geographic unit of analysis of the crop information? ½ mile? 1 mile? This is important if stakeholders are to believe what the analysis assigns to their region of interest.	Crops are generally mapped field-by-field by DWR, the supplier of these data.
8	09/03/13	Nigel Quinn	Draft Task 5.1/5.2 Report	Hard to find the Figure numbers on the Figures supplied by KJ without a magnifying glass. There need to be proper caption for all of these figure so that they each can stand alone and reader doesn't have to hunt through text for the explanation.	Figures are captioned, then discussed at greater length in the text. This is standard. Captions will be enlarged so that they are easier to read. Also, all GIS figures are intended to be printed in 11X17 for readability.
9	09/03/13	Nigel Quinn	Draft Task 5.1/5.2 Report	Page 2, last paragraph, regarding second sentence, "No convenient Central Valley-wide data layer of subsurface flow networks exists, and subsurface hydrography was not mentioned in the Workplan": What is a subsurface flow network?	Groundwater recharge zones are occasionally mapped, but there is no groundwater counterpart to the hydrographic data that were convenient to use at the R5 scale of analysis. A flow network directionally connects upstream recharge to downstream waters.
10	09/03/13	Nigel Quinn	Draft Task 5.1/5.2 Report	Page 3, first bullet, regarding sentence, "The implied multivariate determination of CSZ boundaries (including several of these variables as inputs) was found to be inconsistent with the broader goal of a usable method to inform water quality criteria in narrative AGR objectives, and was thus not pursued": How do you inform water quality criteria?	The Executive Committee discussions have indicated that, when a narrative standard is established, technical analyses (such as those described in the report) serve to inform interpretation of the narrative standard.

Agricultural Zone Map Project

No.	Date Received	Comment Source	Deliverable	Comment	Response
11	09/03/13	Nigel Quinn	Draft Task 5.1/5.2 Report	Figure 1a: Flowchart is conceptually appealing but hard to make sense of the color scheme and what an abbreviated approach might be.	Please see response to comment 3.
12	09/03/13	Nigel Quinn	Draft Task 5.1/5.2 Report	Figure 1b, arrow between boxes 13 and 16: How is this done - compare flow weighted salinity to Hoffman model threshold salinity?	This is to say that the salinity in the supply (flow weighted average of saline discharges and other flow) should be compared to the threshold for unacceptable yield loss by the receptor crop, as defined by CV-SALTS policy.
13	09/03/13	Nigel Quinn	Draft Task 5.1/5.2 Report	Figure 1b, 4th bullet under figure: ?? Doesn't make sense.	The bullets mentioned are shown to the right. The fourth bullet makes the point that drainage areas and water districts are one means of investigating how water flows, but that there are others. One that is more readily translated into spatial relationships between sensitive receptors (sensitive crops) and potential upstream dischargers is hydrography. Unlike polygonal drainage and district areas, hydrographic networks are linear, directional, networked representations of actual watercourses. When analyzing at a large scale and seeking automated means to establish these relationships, hydrographic features work very well.
14	09/03/13	Nigel Quinn	Draft Task 5.1/5.2 Report	Table 1, last row regarding Hanson et al. (2006). What does : "joined with" mean in the statement, "Salinity threshold of crops were compiled from literature and joined with DWR cropping pattern data".	DWR crop classes often do not correspond directly (in name, and sometimes in content) to crops for which salinity tolerance levels are reported by USDS. Thus, the class correspondence must be developed and sensitivity data joined to DWR crop mapping data via this correspondence. The correspondence and resulting maps of crop sensitivity are new products that were previously unavailable, made possible by joining of these two large data sets. .
15	09/03/13	Nigel Quinn	Draft Task 5.1/5.2 Report	Page 19, first paragraph under section titled, "Applied Water Data Request from CV-SALTS to Stakeholders", regarding first sentence, "A data request was developed by the LWA Team to facilitate compilation of readily available irrigation water quality data from CV-SALTS stakeholders": Data request inadequate.	The data request was actually edited and sent by CV-SALTS. Its inadequacy was not mentioned at the time, although there was concern that few might respond. One impetus for the request was the paucity of data on applied water quality (a critical component to salt balances and to understanding potential salinity stresses in fields), A second impetus was a request from Coalition members that they be consulted when questions about their farming operations arise. .
16	09/03/13	Nigel Quinn	Draft Task 5.1/5.2 Report	Page 19, second paragraph under section titled, "Applied Water Data Request from CV-SALTS to Stakeholders", regarding last sentence, "This effort was completed with no additional water quality data from stakeholders by the time of this Report": Stakeholders rarely respond to these never ending data requests.	As noted in the report, KRCD was a notable exception. As a result of their response, the project team was able to refine applied water quality extensively for ICM Task 7. Two other efforts to obtain applied water quality data were made. DWR was contacted and was helpful, but data delivered were inadequate and schedule did not permit follow-up. WARMF contains estimates of applied water quality, which were extracted and mapped as part of the 5.1 effort. This was an innovative way to meet this project need, since data were not forthcoming through the data request.
17	09/03/13	Nigel Quinn	Draft Task 5.1/5.2 Report	Page 22, 4th paragraph under section title, "Crop Sensitivity Data", regarding sentence, "Due to the simplicity of this calculation, site-specific and climatic and management data that can be considered in Hoffman or similar analyses have not been fully considered.": Don't follow - what has this to do with simplicity?	Two equations from Ayers & Westcot can be combined to provide an initial estimate of applied water TDS to produce 95% maximum yield. While this approach is very useful to map relative levels of crop sensitivity in terms of TDS of applied water, the calculation is more approximate than a Hoffman analysis. We point this out, but think that for this application, the simplified approach is fine.

Agricultural Zone Map Project

No.	Date Received	Comment Source	Deliverable	Comment	Response
18	09/03/13	Nigel Quinn	Draft Task 5.1/5.2 Report	Page 24, last paragraph (ends on page 25), regarding text that states, "...figures reference hydrography but they are not extended to constitute a direct application of the tributary rule, rather the focus is on identifying recharge areas that most greatly influence applied irrigation water quality.": text not clear.	The point made is that the use of hydrographic networks is not intended to imply that discharges in remote upstream areas will significantly impair applied water. This is because remote discharges may be extensively diluted by other flow. We recommend that such mixing be taken into account to avoid exaggerating the influence of remote discharges on downstream irrigators.
19	09/03/13	Nigel Quinn	Draft Task 5.1/5.2 Report	Page 25, 3rd bullet regarding "Groundwater Recharge Areas", last sentence, "Therefore, concentration targets based on this crop patch could inform AGR water quality objectives for that groundwater and areas that recharge it with dilution and other factors appropriately accounted for": recharge with dilution?	Assuming that a groundwater body is recharged over a broad area and that some mixing occurs, a discharge on a subset of that area would be diluted by recharge in the rest of the area.
20	09/03/13	Nigel Quinn	Draft Task 5.1/5.2 Report	Page 25, next to last paragraph, regarding first sentence, "The initial assessment resulted in a selection of 19 focused zones based on the Hydrologic Unit boundaries presented in Figure 3, drawing the names for each unit from their numeric designations in the original hydrographic database.": Don't see the utility in this. These hydrologic units are very coarse and have very little to do with water quality. I would have much rather seen CSZ's defined at the sub-water district level. Where individual water districts (which are the main agent of determining water quality) can be subdivided by water supply source. For example in Patterson Irrigation District subareas can be divided into (a) DMC water alone (b) River alone (c) co-mingled river and DMC (d) groundwater only (f) combined river, DMC and groundwater.	Please see response to comment 1.
21	09/03/13	Nigel Quinn	Draft Task 5.1/5.2 Report	Page 27, last paragraph, regarding last sentence: "Basic data to perform this type of detailed analysis is provided in this Report, but the detailed analysis itself is beyond the scope of the current work. Please note again that these figures are not intended to imply the strict application of the tributary rule, rather that hydrographic network could be helpful in differentiating between areas that could or could not influence applied water quality in an area where sensitive crops are being grown.": It isn't really clear from the figures how this information is used. There is insufficient detail on the figures to explain what is being displayed.	The figure is explained where it is referenced in the text of the report, not on the figure itself. This is standard.

Agricultural Zone Map Project

No.	Date Received	Comment Source	Deliverable	Comment	Response
22	09/03/13	Nigel Quinn	Draft Task 5.1/5.2 Report	Page 32, paragraph under Section 4.1.2, regarding sentence: "These concentrations are flow-weighted averages of applied surface water and groundwater. Note that for some areas, WARMF predicts no applied water, so that no applied water salinity is shown.": Has Joel indicated why this occurs? Is this real? If unrealistic - how will WARMF be adjusted to better simulate reality?	As mentioned in Response 16, WARMF supplied estimates of applied water quality that were otherwise unavailable. One reason WARMF shows no application to certain lands is that they in fact are not irrigated, as indicated by their land cover class (e.g., industrial, native vegetation, or barren land cover classes). These appear to be the types of areas for which no applied water was noted. Further investigation of WARMF's interior workings were beyond the scope of the work.
23	09/03/13	Nigel Quinn	Draft Task 5.1/5.2 Report	Page 36, regarding third full paragraph: I disagree with this assertion. The hydrographic basis is too crude and at best an expedient for hydrologic analysis. These CSZ's have no inherent tie either to water quality or to management. Although the alternative water district-based delineation would have produced a rather large number of CSZ's (which could have been aligned by Basin) -this at least would give a linkage to the data collection efforts underway within each District. District's would be more likely to collaborate to divvy-up their acreage according to sensitive and non-sensitive areas.	Please see response to comment 1.
24	09/03/13	Nigel Quinn	Draft Task 5.1/5.2 Report	Page 37, last paragraph, all but last sentence (quoted in full in comment 1 above): This is basically my argument for making the CSZ a highly refined unit within a given water district - you have stated the benefit of doing just this.	Please see response to comment 1. The commenter is correct, and the report agrees with the assertion that CSZs are in many cases too large a unit of final analysis to inform AGR narrative standards. This is a finding of this work, and a responsive methodology has been proposed in the report to deal with it.
25	09/03/13	Nigel Quinn	Draft Task 5.1/5.2 Report	Large figures, e.g., Figure 2 - increase font size of figure number, file/date information in lower right corner	Font size for the large GIS figures will be increased. Also, all GIS figures are intended to be printed in 11X17 for readability.
26	09/04/13	Randy Hanson	Draft Task 5.1/5.2 Report	I totally agree with this suggestion (see Comment 1 and related comments) and CVHM2 is being remapped to more detailed units as well many of which are individual irrigation districts that are the fundamental units of water accounting in many ways. Ironically DWR has a map of almost the whole valley redistricted....so I'm not sure we can get a GIS of that.....just an idea?!?	Sounds like an interesting thing to investigate.
27	09/10/13	Jeanne Chilcott	Draft Task 5.1/5.2 Report	I completely agree with Nigel and Randall that utilizing water agency boundaries may be a more practical way of viewing application of the AGR Zones, interpretations of the narrative AGR water quality objective and a means of engaging stakeholders. However, I have some more fundamental concerns with the way the document is drafted as well as a suggestion on how to move forward to address the concerns (see Comments 28 through 32)	Please see response to comment 1.

Agricultural Zone Map Project

No.	Date Received	Comment Source	Deliverable	Comment	Response
28	09/10/13	Jeanne Chilcott	Draft Task 5.1/5.2 Report	<p><u>The document deviates from the approved scope of work.</u> The draft appears to have several circular discussions and on page 3 and page 26, the following statement, “The implied multivariate determination of CSZ boundaries (including several of these variables as inputs) was found to be inconsistent with the broader goal of a usable method to inform water quality criteria in narrative AGR objectives, and was thus not pursued.” The original scope of work identified utilizing the most sensitive variables input to the Hoffman model as part of the determination of the AGR zones. Much of the report is justification for NOT utilizing the approach specified in the original scope. The decision to change the scope is not up to the subcontractor, and the subcontract clearly states that “Any changes to the scope of work will require Executive Committee approval. . .” (first paragraph of scope of work). As stated as part of the draft on page 7, “The GIS Task 5 Workplan calls for analysis of spatial data (cropping patterns, soil, climate, and management) to delineate CSZs, and then to identify the most sensitive major crops grown in each CSZ and the irrigation water quality required to produce those crops.” The draft started at a different scale by working backward from the location of sensitive crops.</p>	<p>Please see responses to comment 1. Sensitive crop distribution was investigated first. Results illustrate that plantings are often highly localized. This tells you WHERE crops needing protection are, so you need to know WHERE the water to irrigate them comes from. The workplan anticipated this by referencing drainage basins and water districts, but these are inferior to hydrography for this function when working at a large scale. Please see responses to comment 13. We thus made a tactical decision to use hydrography instead of districts and drainage basins. This decision did/does not seem as profound the commenter implies, and the reason for excluding the use of these data is unclear. Further, although climate, soils, and crop data were to be collected as part of 5.1, they are more suited (other than determining sensitive crop location) to determination of WHAT level of salinity might be harmful, and were compiled for eventual use in 5.3. No Hoffman or Hoffman-like analysis (to which these variables are inputs) was scoped in 5.1 or 5.2. Thus, this report presents all of these data, but only analyzes those related to development of zones. It was and is the technical judgment of the project team, based on reasoning that is extensively documented, that soil mapping units and climate have little to tell us about the location in which restrictions on discharges should be implemented for the purposes of crop yield protection.</p>
29	09/10/13	Jeanne Chilcott	Draft Task 5.1/5.2 Report	<p><u>The document moves back and forth between detailed discussions on topics to be addressed in the future and staying on task to develop the draft AGR zone boundaries.</u> The draft appears to get a bit ahead of itself in trying to discuss how additional data may be utilized in the future (e.g. whether current surface and groundwater supplies meet potential future objectives and the role that blending and water management may play). The current task is to come up with a way to justify reasonable, broad AGR zones with like climate, soils, cropping patterns, management, etc. as specified in the scope of work. The additional layers were requested for use in the future. The additional discussion appears to stem from the justification of changing the approach to the project—again, not part of the scope. The first steps scoped were to identify like AGR zones, identify the most salt sensitive commercial crops within those zones, and then determine an applied water salinity concentration that is considered protective of the sensitive crop(s). The calculated number could then be ground truthed with actual water quality applied—as part of a future task. Knowing that water quality now is not necessary for “calculating” a protective number.</p>	<p>Many of the detailed discussions were added at the request of previous reviewers. We agree that they make the report less concise, but felt it important to provide detailed explanations when they were requested. See response to comment 28.</p>

Agricultural Zone Map Project

No.	Date Received	Comment Source	Deliverable	Comment	Response
30	09/10/13	Jeanne Chilcott	Draft Task 5.1/5.2 Report	<p><u>The approach proposed, while likely scientifically and technically sound, is at a more detailed level than may be practical to implement.</u> On the valley floor, hydrologic basins do not necessarily equate to units of management. Water is on many occasions moved across basin boundaries through agreements between water agencies and then recirculated. Figure 6 overlays the proposed CSZ's based on hydrologic units with the drainage basins developed in 1992 with water agency input. While there is some overlap, from a practical management perspective, grouping some of the drainage basins (that already incorporate district boundaries) may provide a good initial broad base since those boundaries were based on like hydrology, cropping and management and vetted with the ag community. The more detailed analysis of recharge areas for specific sensitive crops may be a second layer of analysis that could occur within the broader zones at the discretion of the districts, rather than as an initial criteria for development of the AGR zones.</p>	<p>The tiered analysis described by the commenter, first of broad zones, and then (as necessary) of areas within those zones, is the methodology described in the report. Where dischargers are faced with severe limitations to salt discharges that may be quite costly to comply with, and where the type of management complexity the commenter cites needs to be taken into account, the cost of a more detailed analysis may be well justified. Detailed methods that take account of water flow and management should therefore be provided for as an option to properly inform AGR narrative standards under such circumstances.</p>
31	09/10/13	Jeanne Chilcott	Draft Task 5.1/5.2 Report	<p><u>Current approach to identify recharge areas relies on one year of cropping data.</u> The emphasis of the current approach relies on protection of supply water for the most sensitive crops. Yet, only one snapshot of cropping pattern was utilized. Identification of zones needing special levels of protection may be better pursued at the district level where they would understand the history of the cropping pattern within their area and be able to better identify recharge areas based on their water management. (Also, I had thought that the recommendation from the policy committee was to look at the top 95% of commercial crops grown over the last several years within an area when determining sensitive crops—though that data may only be available at the county level.)</p>	<p>Rationale for use of the most recent land cover data is presented in the report, and has been supported by agricultural producers with whom the methodology has been discussed. Location of sensitive (often high-value) crops is a result of decisions farmers make based on a myriad of variables too extensive to be reliably represented or analyzed in some sort of behavioral model. Further, new technology, such as new varieties, pest control, and irrigation, as well as market conditions such as demand for heart-healthy nuts and fruits, are not likely to be reversed and trigger a return to cropping patterns of the 1990s. Thus, the most accurate representation of likely future behavior (planting patterns) is actual present land cover. As changes in this pattern develop, adjustments to relocations of sensitive crop plantings may well be needed, but they cannot be reliably predicted. As for the 95%, this was the basis of determining major and minor crops. These calculations were done within each CSZ on the basis of acreage in the land cover data, and results are shown on the maps in the report as "sensitive major crops".</p>

Agricultural Zone Map Project

No.	Date Received	Comment Source	Deliverable	Comment	Response
32	09/10/13	Jeanne Chilcott	Draft Task 5.1/5.2 Report	<p><u>Moving Forward</u> - The project appears to have deviated from its original scope without any discussion at the Executive Committee. Also, there has not yet been an opportunity to discuss the approach and proposed boundaries with the ag community—who would be most knowledgeable about appropriate zoning and who may also be the most impacted by potential results of this project. I would suggest a focused discussion on this draft report, approach, results and options with the project committee AND representatives from the ag community before finalizing and moving forward.</p>	<p>The discussion with representatives of the Ag Community is scheduled for November 13, 2013. Commenters find the use of hydrographic data to be alarming and out of scope. However, the employment of water districts in the manner suggested was not envisioned either, and the workplan's explicit limitation of the number of CSZs would seem to preclude this creditable idea. This illustrates the fact that interpretation of the workplan is something all parties are engaged in, throughout the work. In the case of the Project Team, our focus was solving the problem of developing a spatial framework to protect crop yield without creating unnecessary and costly economic impacts on dischargers who have no influence on sensitive crops, and achieving this goal within the major constraints of the workplan, without requesting additional budget from CV-SALTS. In the course of a complex analysis of this kind, it is not always evident which of the hundreds of decisions that must be made will later pique the interest of reviewers. It was not in the least obvious that hydrographic data, which seemed to have evident advantages for protecting crop yield with spatially focused restrictions, would become such a point of concern.</p>
33	09/10/13	Roger Reynolds	Draft Task 5.1/5.2 Report	<p>Page 5, Section 1.1 Description of GIS Task 5 – States the “main purpose of Task 5 is to develop a Crop Sensitivity Tool Set (CST) which is intended to provide a method to analyze GIS layers to produce results that inform AGR designations and implementation.” It goes on to state the main potential water quality impairment is elevated salinity, yet states that will be not be developed until Phase 2. Elevated salinity water levels are known by individual water suppliers or districts. Areas with elevated salt levels are also known by the ag community in these areas. Therefore, the comments of other committee members to use water district boundaries for AGR zones seems to make more sense than using the hydrologic areas proposed. It may be more complicated to set up and utilize in a model, but discussion on this issue is needed to make sure we are moving in the right direction.</p>	<p>Please see response to comment 1. We agree that water districts have an important role at the implementation level, and have attempted to set the stage for this as well as we could, given the coarse spatial level of analysis that was defined in the workplan.</p>
34	09/10/13	Roger Reynolds	Draft Task 5.1/5.2 Report	<p>Much of the discussion tries to explain or justify why the hydrologic area methodology was chosen. This appears to be the primary purpose of Section 1.3.</p>	<p>Indeed it was. Please see response to comment 29.</p>
35	09/10/13	Roger Reynolds	Draft Task 5.1/5.2 Report	<p>Nigel Quinn and Jeanne Chilcott also raise some good questions regarding practical implementation aspects of the proposed CST and the accuracy or reliability of the cropping data used. The comments and questions raised deserve further discussion.</p>	<p>Please see responses to comments 30 and 31.</p>

Agricultural Zone Map Project

No.	Date Received	Comment Source	Deliverable	Comment	Response
36	10/03/13	Randy Hanson	Draft Task 5.1/5.2 Report	<p>First while the DWR land use was helpful it is woefully inadequate to assess the dynamics of some sectors of agriculture. Other mechanisms of monitoring land use must be explored and developed. Other alternatives such as the USDA CropScape may be useful alternatives but are also erroneous and inadequate in other ways. We are also doing this for CVHM2 for example. While the study has created new information about the distribution of salt-sensitive crops based on recent land use, our ability to plug this information back into the WARMF and CVHM2 models will also need to be addressed either through better data streams as input to the models and/or better simulation capabilities that capture more of these aspects of the system. Will these become rate limiting aspects of water availability or water reuse (through re-circulation)? We have a plan for MODFLOW to potentially include more connectivity with salt but the implementation of connectivity can occur at several levels of detail and connectivity and this will need to be evaluated periodically as well to see what levels of connectivity are most effective for this setting and application.</p>	<p>We agree that superior crop cover data would improve analyses, but do not find that DWR mapping is inadequate to the purpose of locating concentrations of sensitive crops. The maps seem to show clear concentrations in many cases. In a few CSZs, sensitive crops are more generally distributed. These patterns seem too clear to be an artifact of DWR's methodology. An acknowledged challenge with DWR land cover data is that, in some cases, it is several years old and may not capture recent and important land cover conversions, such as the recent expansion of microspray and drip irrigation, and expanded permanent crop acreages. Updating of mapping in these areas for future analyses was recommended in the ICM report.</p>
37	10/03/13	Randy Hanson	Draft Task 5.1/5.2 Report	<p>Second to address the reconciliation of yesterdays teleconference I am in concurrence with Nigel, yourself, and others that up to 25 zones within an intersection of salt sensitive crops, hydrologic units, irrigation districts, and drainage basins could be proposed as an initial way to focus the next steps of detailed analysis and management/policy strategies in a relevant context for the farmers, dairies, cities, and ecosystems. This should help to address Jeanne's issues and concerns and better connect their efforts with this project.</p>	<p>The comment seems to encourage the tiered analysis previously described (comment 30).</p>
38	10/03/13	Randy Hanson	Draft Task 5.1/5.2 Report	<p>Third, these focused regions could be somewhat analogous to the Active Management areas used in Arizona by the Arizona Dept of Water Resources but different from the Arizona AMA's could be reevaluated every few years to see if their extent is adequate (needs to be changed?), if they no longer need active management (either changes in land use or local management in place?), or if other regions are now a concern because of changes in land use, climate, or sources of water being used. This would provide a flexible and an iterative process that does not lock anything into a set structure and a structure that can change with changing conditions that really sets up a dynamic process.</p>	<p>Agree. Please see comment 31.</p>